



Belgian Cancer Registry



Cancer Fact Sheet **Cervical Cancer**

ICD10 : C53

**Belgium 2017**

# 1. Cancer Incidence

## 1.1. Number of new diagnoses and incidence rates

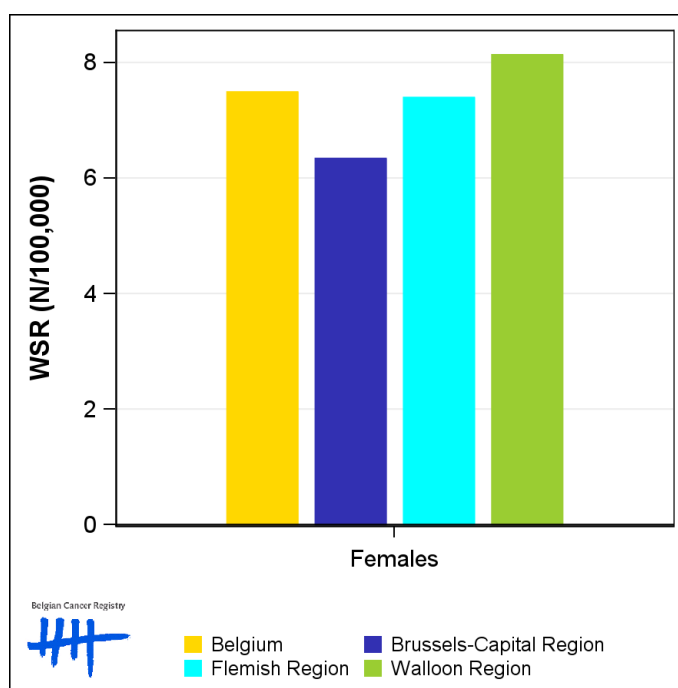
**Table 1:** Cervical Cancer: Average age at diagnosis, number of new cancer diagnoses (N), crude rate (CR), age-standardised incidence rates (ESR and WSR) and cumulative risk by region, 2017

Females	Age (years)	N	CR	ESR	WSR	CRi
<b>Belgium</b>	<b>54.8</b>	<b>622</b>	<b>10.8</b>	<b>9.6</b>	<b>7.5</b>	<b>0.74</b>
Brussels-Capital Region	55.8	54	8.9	8.2	6.3	0.64
Flemish Region	55.0	355	10.8	9.4	7.4	0.74
Walloon Region	54.3	213	11.5	10.4	8.1	0.78

CR=Crude (all ages) Rate (N/100,000 person-years)  
 ESR=Age-Standardised Rate, using the European Standard Population (N/100,000 person-years)  
 WSR=Age-Standardised Rate, using the World Standard Population (N/100,000 person-years)  
 CRi=Cumulative Risk for 0-74 years (%)



**Figure 1:** Cervical Cancer: Age-standardised incidence rates by region, 2017



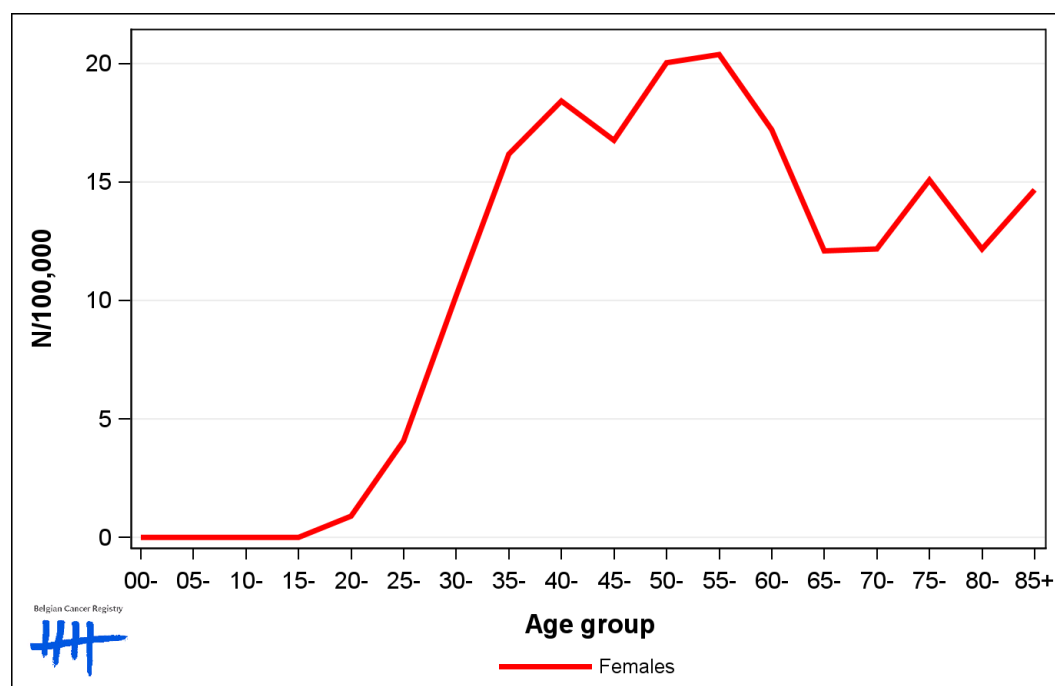
## 1.2. Age-specific incidence rates

**Table 2:** Cervical Cancer: Age-specific incidence rates, crude rate (CR) and age-standardised incidence rates (ESR and WSR), Belgium 2017

	00-	05-	10-	15-	20-	25-	30-	35-	40-	45-	50-	55-	60-	65-	70-	75-	80-	85+	CR	ESR	WSR
Females	0.0	0.0	0.0	0.0	0.9	4.1	10.2	16.2	18.4	16.8	20.0	20.4	17.2	12.1	12.2	15.1	12.2	14.7	10.8	9.6	7.5

CR=Crude (all ages) Rate (N/100,000 person-years)  
 ESR=Age-Standardised Rate, using the European Standard Population (N/100,000 person-years)  
 WSR=Age-Standardised Rate, using the World Standard Population (N/100,000 person-years)

**Figure 2:** Cervical Cancer: Age-specific incidence rates, 2017



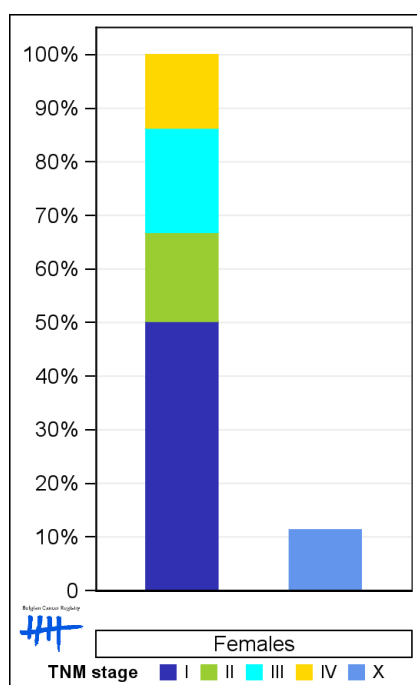
### 1.3. Combined stage

**Table 3:** Cervical Cancer: Distribution of combined stage, Belgium 2017

	Stage I	Stage II	Stage III	Stage IV	Stage X	Stage NA	Total
<b>Females</b>							
N	276	91	107	75	70	3	622
%	44.4	14.6	17.2	12.1	11.3	0.5	100

Staging according to the TNM 8th edition (Ref: Brierley JD, Gospodarowicz MK, Wittekind Ch. TNM classification of malignant tumours, UICC 8th edition)  
 Combined TNM stage : compilation of pathological (pTNM) and clinical (cTNM) stage. pTNM prevails over cTNM, except when cTNM stage is IV  
 Stage X: diagnoses with an unknown stage  
 Stage NA: diagnoses with a histological diagnosis where no stage can be evaluated (Not Applicable)

**Figure 3:** Cervical Cancer: Bar chart of known combined stage, Belgium 2017



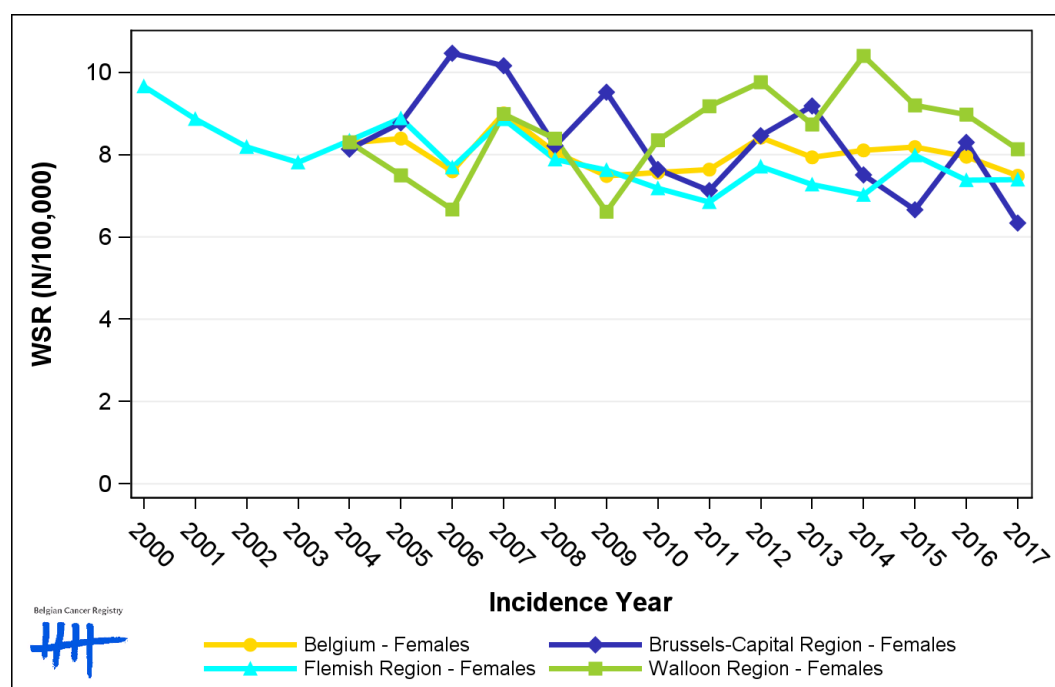
## 1.4. Trends in incidence

**Table 4:** Cervical Cancer: Age-standardised incidence rates (WSR) and average annual percentage change (AAPC) by incidence year and region

Females	2003	2004	2005	2006	2007	2008	2009	2010	2011	2012	2013	2014	2015	2016	2017	AAPC	95% CI
<b>Belgium</b>	8.3	8.4	7.6	9.0	8.1	7.5	7.6	7.6	7.6	8.4	7.9	8.1	8.2	8.0	7.5	-0.4	[-1.1; 0.4]
Brussels-Capital Region	8.1	8.8	10.5	10.2	8.2	9.5	7.6	7.1	8.5	9.2	7.5	6.7	8.3	6.3	-2.2	[-3.9; -0.4]	
Flemish Region	7.8	8.3	8.9	7.7	8.9	7.9	7.6	7.2	6.8	7.7	7.3	7.0	8.0	7.4	7.4	-1.0	[-1.8; -0.1]
Walloon Region	8.3	7.5	6.7	9.0	8.4	6.6	8.3	9.2	9.8	8.7	10.4	9.2	9.0	8.1	1.6	[-0.1; 3.3]	

WSR=Age-Standardised Rate, using the World Standard Population (N/100,000 person-years)  
 AAPC = Average Annual Percentage Change over the 2004-2017 period (except for the Flemish region : 2003-2017).

**Figure 4:** Cervical Cancer: Age-standardised incidence rates (WSR) by incidence year and region



## 1.5. Incidence by broad age groups

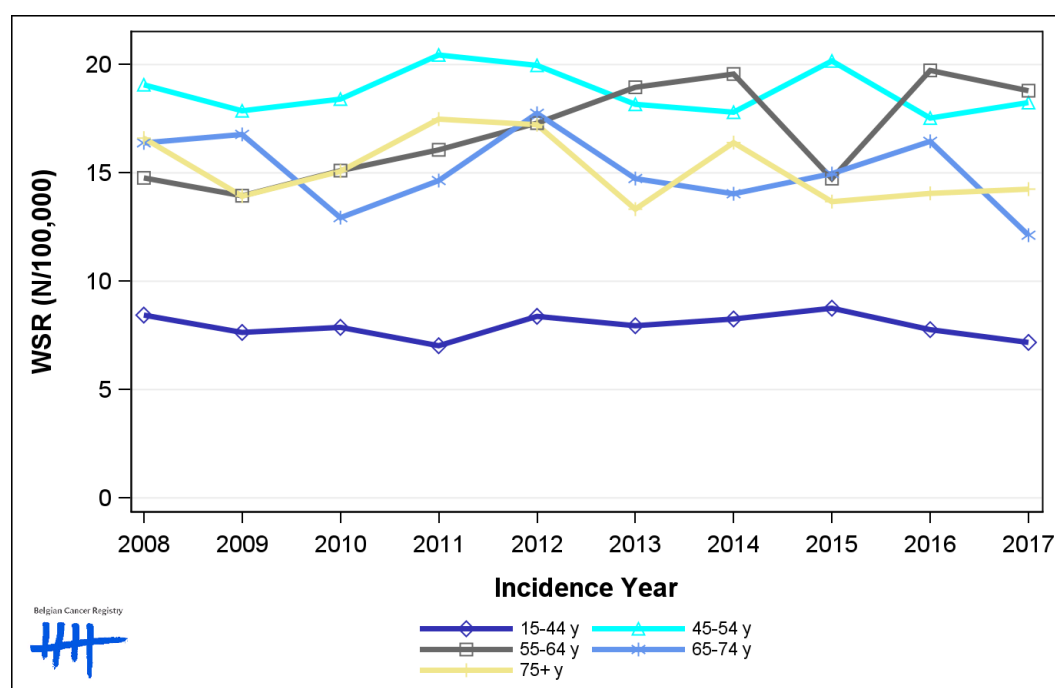
**Table 5:** Cervical Cancer: Number of new diagnoses and age-standardised incidence rates (WSR) by broad age groups and incidence year, Belgium

	N										WSR									
	2008	2009	2010	2011	2012	2013	2014	2015	2016	2017	2008	2009	2010	2011	2012	2013	2014	2015	2016	2017
<b>Females</b>																				
All ages	633	591	600	625	679	630	662	647	646	622	8.1	7.5	7.6	7.6	8.4	7.9	8.1	8.2	8.0	7.5
0-14 y	0	0	0	0	0	0	0	0	0	0	0.0	0.0	0.0	0.0	0.0	0.0	0.0	0.0	0.0	0.0
15-44 y	219	200	201	177	213	202	208	221	195	182	8.4	7.6	7.9	7.0	8.4	7.9	8.3	8.8	7.8	7.2
45-54 y	145	139	144	162	158	145	141	156	137	146	19.1	17.9	18.4	20.4	20.0	18.2	17.8	20.2	17.5	18.2
55-64 y	94	91	101	110	119	131	137	105	143	139	14.8	13.9	15.1	16.1	17.3	19.0	19.6	14.7	19.7	18.8
65-74 y	82	82	63	72	90	76	74	81	91	69	16.4	16.8	12.9	14.6	17.8	14.7	14.0	15.0	16.5	12.1
75+ y	93	79	91	104	99	76	102	84	80	86	16.6	13.9	15.1	17.5	17.2	13.3	16.4	13.7	14.1	14.3

N=Number of invasive tumours

WSR=Age-Standardised Rate, using the World Standard Population (N/100,000 person-years)

**Figure 5:** Cervical Cancer: Age-standardised incidence rates (WSR) versus incidence year by broad age groups, Belgium



Belgian Cancer Registry

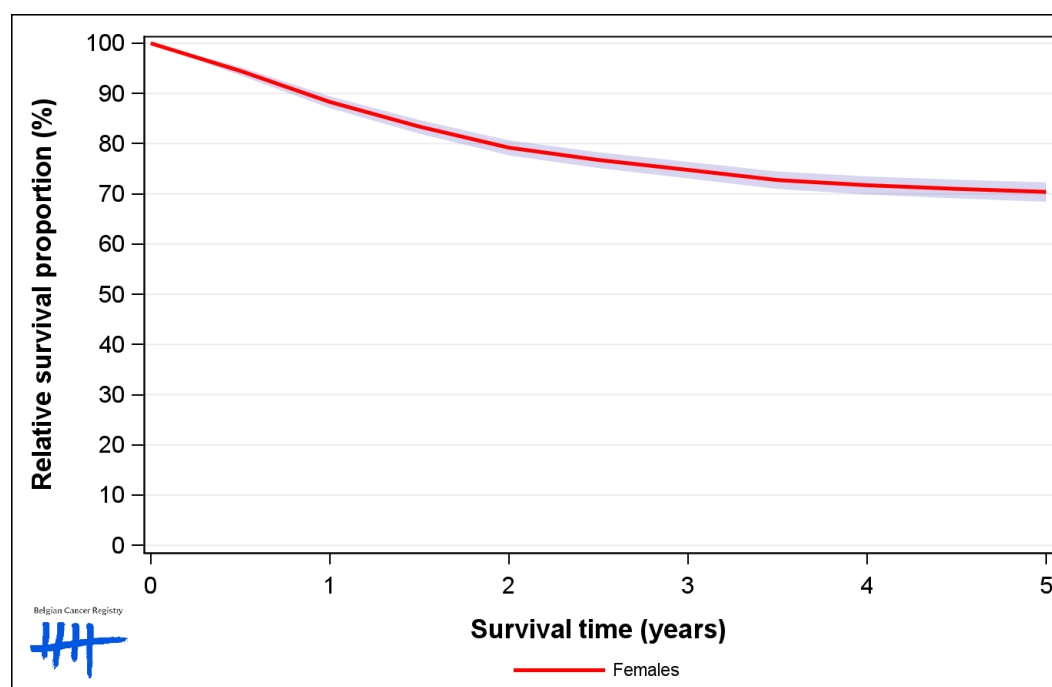
Legend:  
 15-44 y (dark blue diamond)  
 45-54 y (cyan triangle)  
 55-64 y (black square)  
 65-74 y (light blue asterisk)  
 75+ y (yellow plus)

## 2. Relative survival

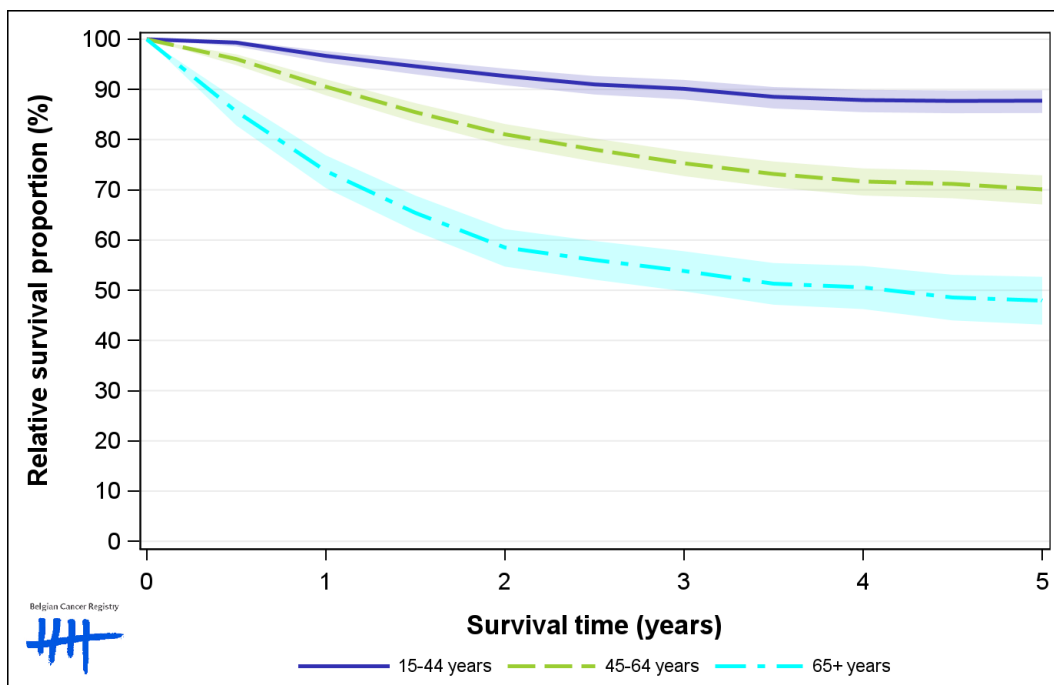
**Table 6:** Cervical Cancer: 5-year relative survival proportion by age group and region, Belgium 2013-2017

	5-year relative survival 2013-2017 (%)		
	Females		
	N at risk	estimate	95% CI
<b>Overall</b>	3,178	70.3	[68.4, 72.3]
<b>Age group</b>			
15-44 years	1,002	87.6	[85.1, 89.7]
45-64 years	1,361	70.1	[67.1, 72.9]
65+ years	815	47.7	[42.9, 52.5]
<b>Region</b>			
Brussels-Capital Region	302	68.0	[60.9, 74.4]
Flemish Region	1,723	71.9	[69.3, 74.5]
Walloon Region	1,153	68.5	[65.2, 71.8]

**Figure 6:** Cervical Cancer: relative survival proportion, Belgium 2013-2017



**Figure 7:** Cervical Cancer: relative survival proportion by age group, Belgium 2013-2017



**Figure 8:** Cervical Cancer: relative survival proportion by region, Belgium 2013-2017

