

Belgian Cancer Registry



Cancer Fact Sheet **Corpus Uteri Cancer**

ICD10 : C54

Belgium 2017

1. Cancer Incidence

1.1. Number of new diagnoses and incidence rates

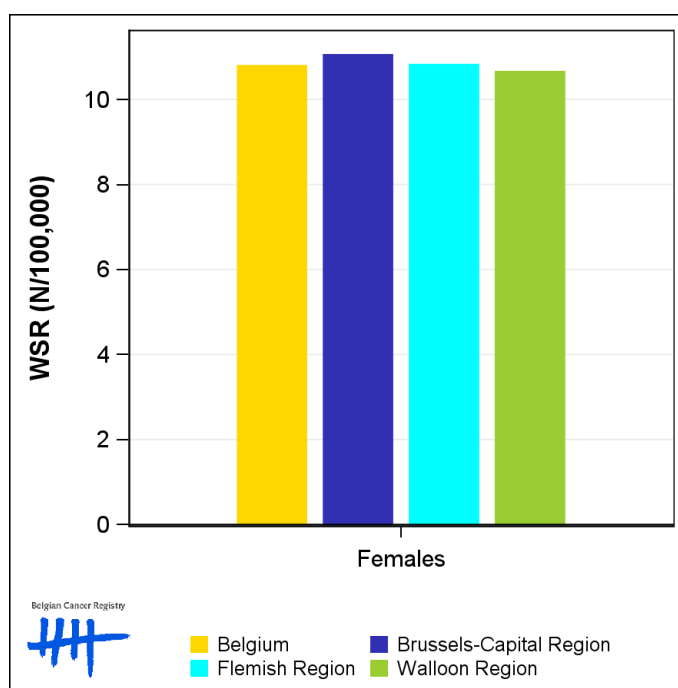
Table 1: Corpus Uteri Cancer: Average age at diagnosis, number of new cancer diagnoses (N), crude rate (CR), age-standardised incidence rates (ESR and WSR) and cumulative risk by region, 2017

| Females | Age (years) | N | CR | ESR | WSR | CRi |
|-------------------------|-------------|--------------|-------------|-------------|-------------|-------------|
| Belgium | 69.9 | 1,394 | 24.2 | 15.8 | 10.8 | 1.41 |
| Brussels-Capital Region | 68.1 | 110 | 18.1 | 15.7 | 11.1 | 1.37 |
| Flemish Region | 69.9 | 833 | 25.3 | 15.9 | 10.8 | 1.43 |
| Walloon Region | 70.3 | 451 | 24.4 | 15.6 | 10.7 | 1.37 |

CR=Crude (all ages) Rate (N/100,000 person-years)
ESR=Age-Standardised Rate, using the European Standard Population (N/100,000 person-years)
WSR=Age-Standardised Rate, using the World Standard Population (N/100,000 person-years)
CRi=Cumulative Risk for 0-74 years (%)



Figure 1: Corpus Uteri Cancer: Age-standardised incidence rates by region, 2017



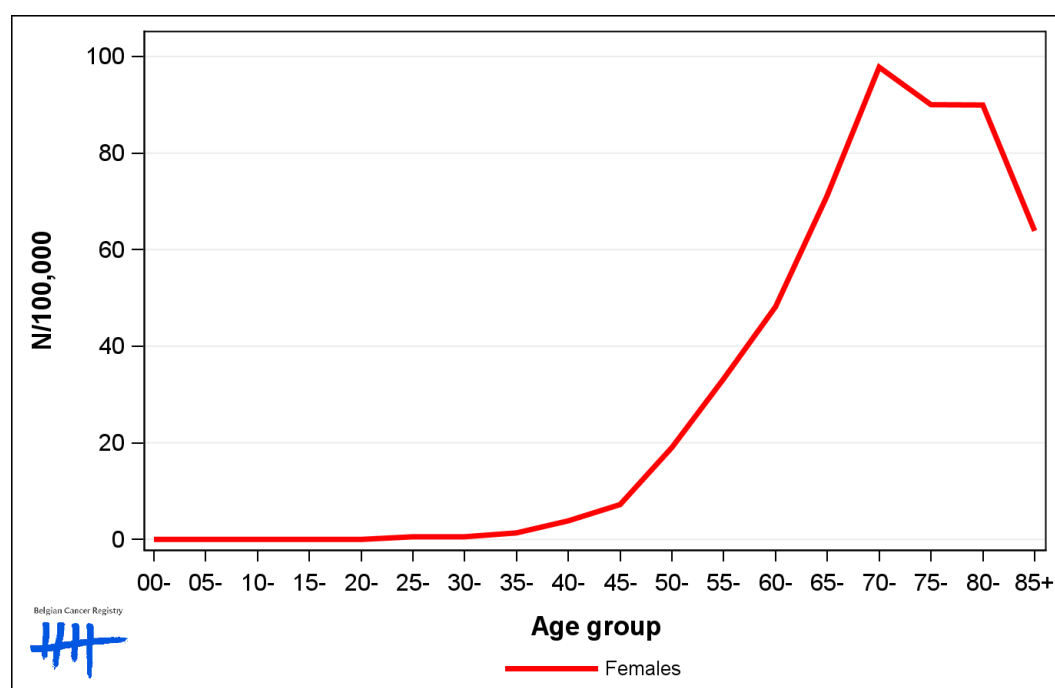
1.2. Age-specific incidence rates

Table 2: Corpus Uteri Cancer: Age-specific incidence rates, crude rate (CR) and age-standardised incidence rates (ESR and WSR), Belgium 2017

| | 00- | 05- | 10- | 15- | 20- | 25- | 30- | 35- | 40- | 45- | 50- | 55- | 60- | 65- | 70- | 75- | 80- | 85+ | CR | ESR | WSR |
|---------|-----|-----|-----|-----|-----|-----|-----|-----|-----|-----|------|------|------|------|------|------|------|------|------|------|------|
| Females | 0.0 | 0.0 | 0.0 | 0.0 | 0.0 | 0.5 | 0.6 | 1.3 | 3.8 | 7.2 | 19.0 | 33.3 | 48.2 | 71.3 | 97.8 | 90.0 | 90.0 | 63.9 | 24.2 | 15.8 | 10.8 |

CR=Crude (all ages) Rate (N/100,000 person-years)
 ESR=Age-Standardised Rate, using the European Standard Population (N/100,000 person-years)
 WSR=Age-Standardised Rate, using the World Standard Population (N/100,000 person-years)

Figure 2: Corpus Uteri Cancer: Age-specific incidence rates, 2017



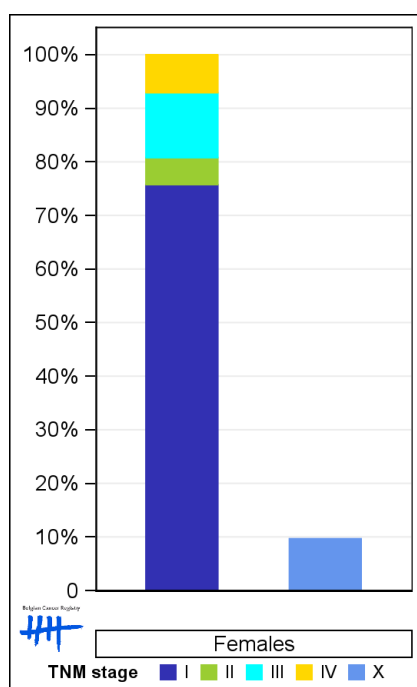
1.3. Combined stage

Table 3: Corpus Uteri Cancer: Distribution of combined stage, Belgium 2017

| | Stage I | Stage II | Stage III | Stage IV | Stage X | Stage NA | Total |
|----------------|---------|----------|-----------|----------|---------|----------|-------|
| Females | | | | | | | |
| N | 900 | 60 | 144 | 84 | 127 | 79 | 1,394 |
| % | 64.6 | 4.3 | 10.3 | 6.0 | 9.1 | 5.7 | 100 |

Staging according to the TNM 8th edition (Ref: Brierley JD, Gospodarowicz MK, Wittekind Ch. TNM classification of malignant tumours, UICC 8th edition)
 Combined TNM stage : compilation of pathological (pTNM) and clinical (cTNM) stage. pTNM prevails over cTNM, except when cTNM stage is IV
 Stage X: diagnoses with an unknown stage
 Stage NA: diagnoses with a histological diagnosis where no stage can be evaluated (Not Applicable)

Figure 3: Corpus Uteri Cancer: Bar chart of known combined stage, Belgium 2017



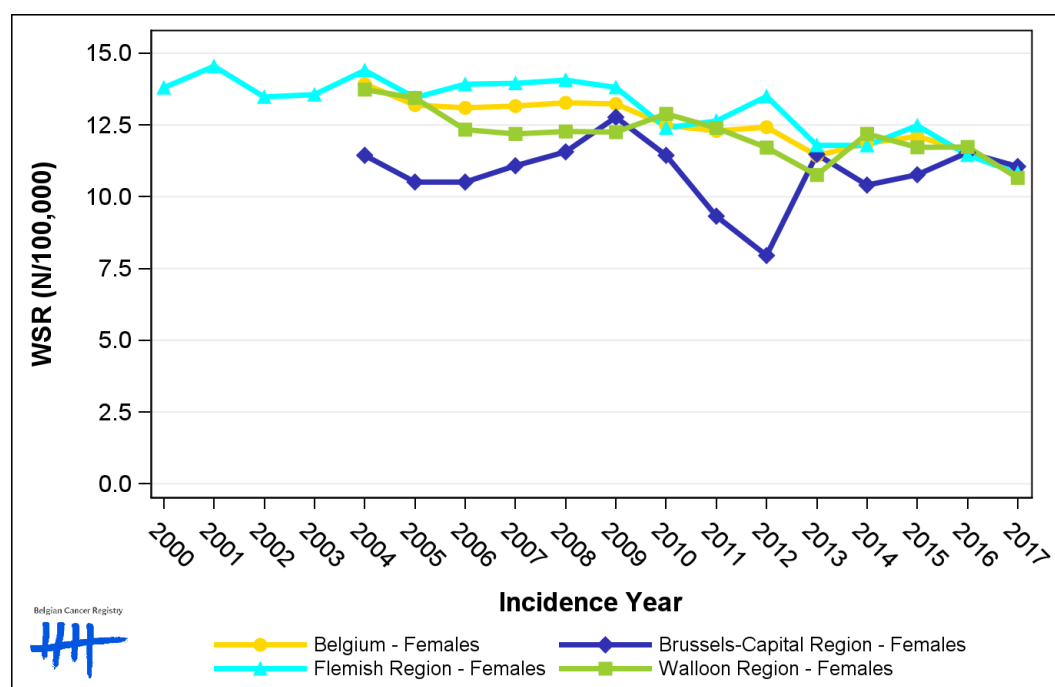
1.4. Trends in incidence

Table 4: Corpus Uteri Cancer: Age-standardised incidence rates (WSR) and average annual percentage change (AAPC) by incidence year and region

| Females | 2003 | 2004 | 2005 | 2006 | 2007 | 2008 | 2009 | 2010 | 2011 | 2012 | 2013 | 2014 | 2015 | 2016 | 2017 | AAPC | 95% CI |
|-------------------------|------|------|------|------|------|------|------|------|------|------|------|------|------|------|------|------|--------------|
| Belgium | 13.9 | 13.2 | 13.1 | 13.2 | 13.2 | 13.3 | 13.2 | 12.5 | 12.3 | 12.4 | 11.4 | 11.9 | 12.1 | 11.6 | 10.8 | -1.6 | [-2.0; -1.2] |
| Brussels-Capital Region | 11.4 | 10.5 | 10.5 | 11.1 | 11.6 | 12.8 | 11.4 | 9.3 | 8.0 | 11.5 | 10.4 | 10.8 | 11.5 | 11.1 | 11.1 | -0.3 | [-1.9; 1.4] |
| Flemish Region | 13.6 | 14.4 | 13.5 | 13.9 | 14.0 | 14.1 | 13.8 | 12.4 | 12.6 | 13.5 | 11.8 | 11.8 | 12.5 | 11.5 | 10.8 | -1.7 | [-2.2; -1.1] |
| Walloon Region | 13.7 | 13.4 | 12.3 | 12.2 | 12.3 | 12.3 | 12.3 | 12.9 | 12.4 | 11.7 | 10.8 | 12.2 | 11.7 | 11.7 | 10.7 | -1.3 | [-2.0; -0.7] |

WSR=Age-Standardised Rate, using the World Standard Population (N/100,000 person-years)
 AAPC = Average Annual Percentage Change over the 2004-2017 period (except for the Flemish region : 2003-2017).

Figure 4: Corpus Uteri Cancer: Age-standardised incidence rates (WSR) by incidence year and region



1.5. Incidence by broad age groups

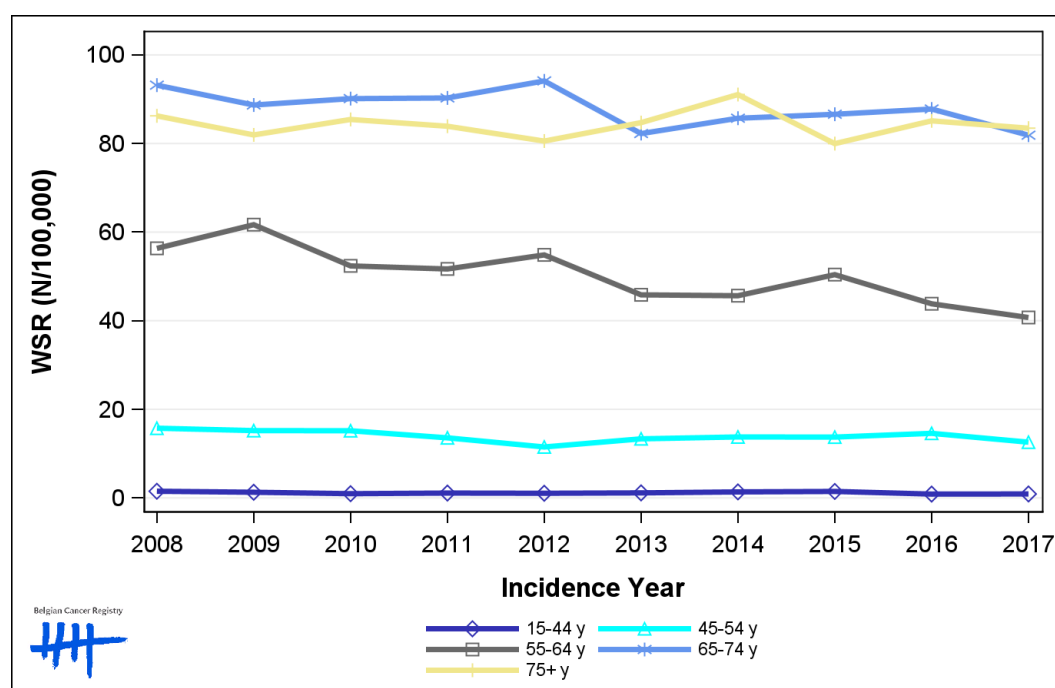
Table 5: Corpus Uteri Cancer: Number of new diagnoses and age-standardised incidence rates (WSR) by broad age groups and incidence year, Belgium

| | N | | | | | | | | | | WSR | | | | | | | | | |
|----------------|-------|-------|-------|-------|-------|-------|-------|-------|-------|-------|------|------|------|------|------|------|------|------|------|------|
| | 2008 | 2009 | 2010 | 2011 | 2012 | 2013 | 2014 | 2015 | 2016 | 2017 | 2008 | 2009 | 2010 | 2011 | 2012 | 2013 | 2014 | 2015 | 2016 | 2017 |
| Females | | | | | | | | | | | | | | | | | | | | |
| All ages | 1,466 | 1,461 | 1,417 | 1,428 | 1,448 | 1,384 | 1,461 | 1,456 | 1,439 | 1,394 | 13.3 | 13.2 | 12.5 | 12.3 | 12.4 | 11.4 | 11.9 | 12.1 | 11.6 | 10.8 |
| 0-14 y | 0 | 0 | 0 | 0 | 0 | 0 | 0 | 0 | 0 | 0 | 0.0 | 0.0 | 0.0 | 0.0 | 0.0 | 0.0 | 0.0 | 0.0 | 0.0 | 0.0 |
| 15-44 y | 40 | 35 | 26 | 28 | 27 | 28 | 35 | 39 | 23 | 23 | 1.5 | 1.3 | 1.0 | 1.1 | 1.1 | 1.1 | 1.4 | 1.5 | 0.9 | 0.9 |
| 45-54 y | 123 | 121 | 122 | 111 | 95 | 111 | 115 | 115 | 119 | 105 | 15.7 | 15.2 | 15.2 | 13.6 | 11.5 | 13.3 | 13.8 | 13.7 | 14.6 | 12.6 |
| 55-64 y | 357 | 399 | 346 | 351 | 375 | 315 | 316 | 356 | 313 | 297 | 56.3 | 61.7 | 52.4 | 51.7 | 54.9 | 45.8 | 45.7 | 50.4 | 43.8 | 40.7 |
| 65-74 y | 462 | 437 | 438 | 454 | 478 | 426 | 453 | 466 | 487 | 473 | 93.2 | 88.7 | 90.1 | 90.3 | 94.1 | 82.3 | 85.7 | 86.6 | 87.8 | 81.9 |
| 75+ y | 484 | 469 | 485 | 484 | 473 | 504 | 542 | 480 | 497 | 496 | 86.3 | 82.0 | 85.4 | 83.9 | 80.6 | 84.7 | 91.1 | 80.0 | 85.1 | 83.5 |

N=Number of invasive tumours

WSR=Age-Standardised Rate, using the World Standard Population (N/100,000 person-years)

Figure 5: Corpus Uteri Cancer: Age-standardised incidence rates (WSR) versus incidence year by broad age groups, Belgium



Belgian Cancer Registry

Legend:
 15-44 y (dark blue diamond)
 45-54 y (cyan triangle)
 55-64 y (grey square)
 65-74 y (blue asterisk)
 75+ y (yellow plus)

2. Relative survival

Table 6: Corpus Uteri Cancer: 5-year relative survival proportion by age group and region, Belgium 2013-2017

| | 5-year relative survival 2013-2017 (%) | | |
|-------------------------|---|----------|--------------|
| | Females | | |
| | N at risk | estimate | 95% CI |
| Overall | 7,088 | 81.4 | [80.0, 82.9] |
| Age group | | | |
| 15-54 years | 703 | 89.2 | [86.3, 91.7] |
| 55-69 years | 2,765 | 85.7 | [83.9, 87.4] |
| 70+ years | 3,620 | 76.3 | [73.8, 78.9] |
| Region | | | |
| Brussels-Capital Region | 556 | 78.6 | [73.0, 83.9] |
| Flemish Region | 4,292 | 82.4 | [80.6, 84.2] |
| Walloon Region | 2,240 | 80.1 | [77.4, 82.7] |

Figure 6: Corpus Uteri Cancer: relative survival proportion, Belgium 2013-2017

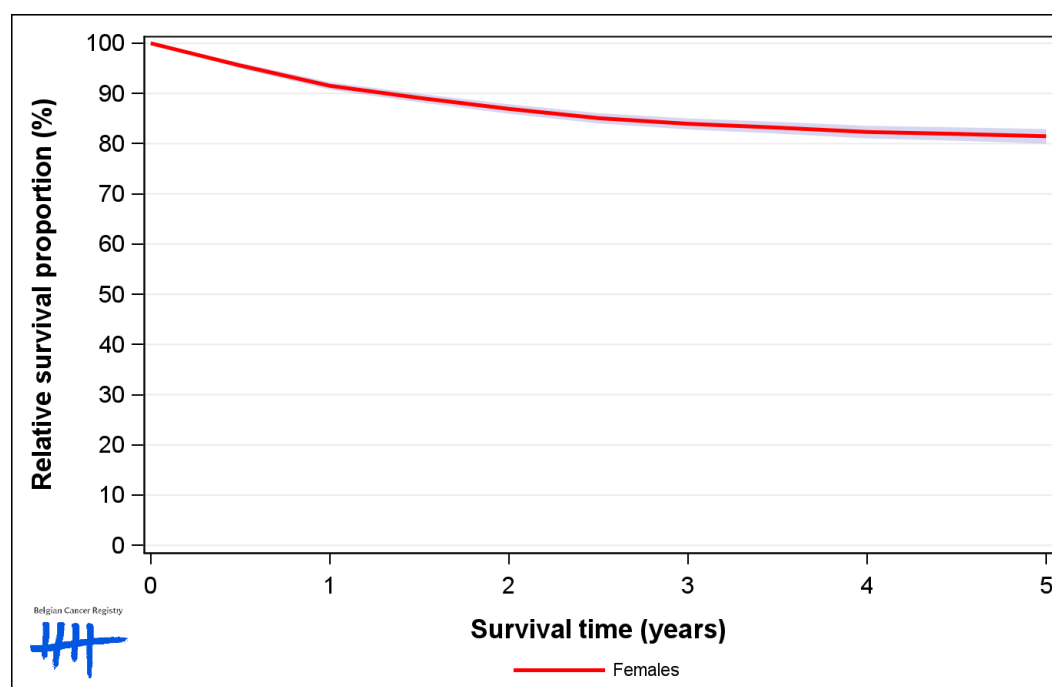


Figure 7: Corpus Uteri Cancer: relative survival proportion by age group, Belgium 2013-2017

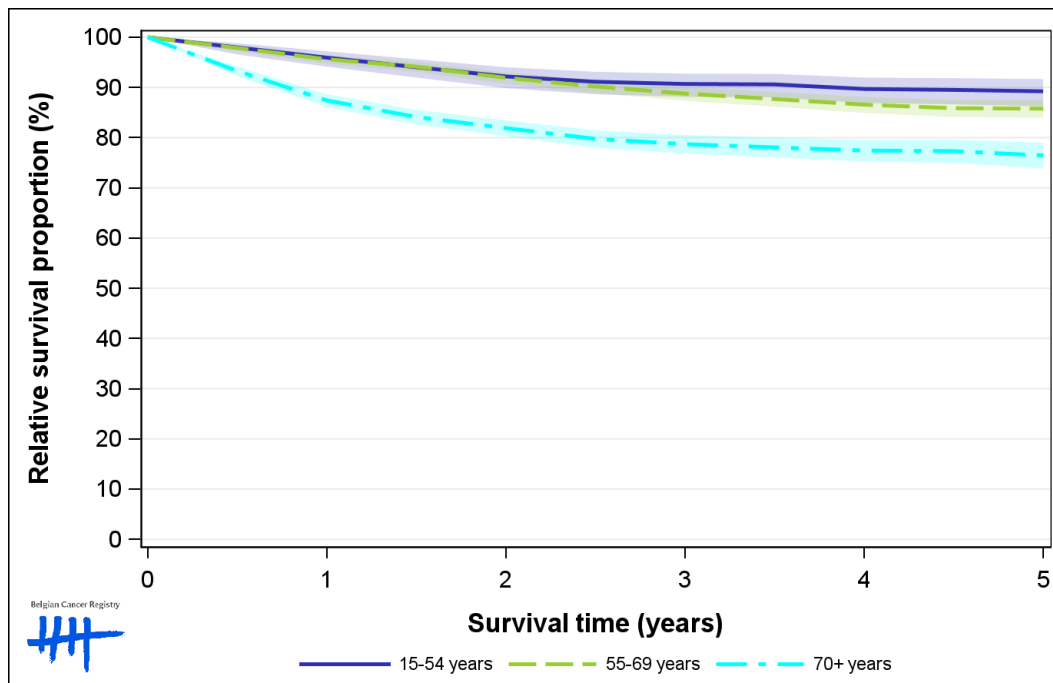


Figure 8: Corpus Uteri Cancer: relative survival proportion by region, Belgium 2013-2017

