

Belgian Cancer Registry



Cancer Fact Sheet **Cervical Cancer**

ICD10 : C53

Belgium 2018

1. Cancer Incidence

1.1. Number of new diagnoses and incidence rates

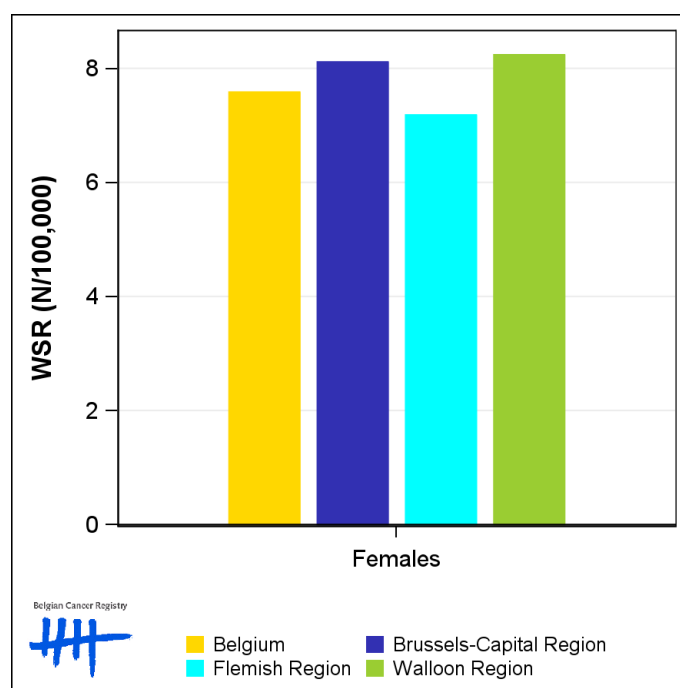
Table 1: Cervical Cancer: Average age at diagnosis, number of new cancer diagnoses (N), crude rate (CR), age-standardised incidence rates (ESR and WSR) and cumulative risk by region, 2018

Females	Age (years)	N	CR	ESR	WSR	CRi
Belgium	55.2	634	11.0	9.7	7.6	0.75
Brussels-Capital Region	51.9	63	10.3	10.3	8.1	0.84
Flemish Region	55.6	347	10.5	9.1	7.2	0.70
Walloon Region	55.6	224	12.1	10.6	8.2	0.82

CR=Crude (all ages) Rate (N/100,000 person-years)
 ESR=Age-Standardised Rate, using the European Standard Population (N/100,000 person-years)
 WSR=Age-Standardised Rate, using the World Standard Population (N/100,000 person-years)
 CRi=Cumulative Risk for 0-74 years (%)



Figure 1: Cervical Cancer: Age-standardised incidence rates by region, 2018



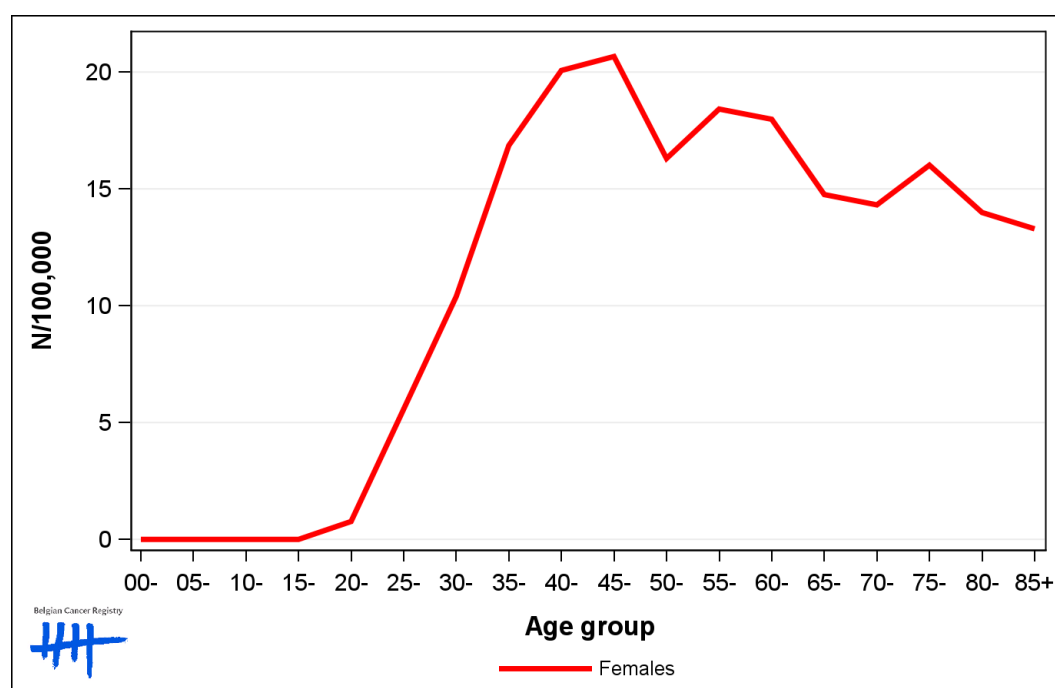
1.2. Age-specific incidence rates

Table 2: Cervical Cancer: Age-specific incidence rates, crude rate (CR) and age-standardised incidence rates (ESR and WSR), Belgium 2018

	00-	05-	10-	15-	20-	25-	30-	35-	40-	45-	50-	55-	60-	65-	70-	75-	80-	85+	CR	ESR	WSR
Females	0.0	0.0	0.0	0.0	0.6	4.0	9.9	13.1	19.1	22.0	17.2	19.2	16.4	20.0	9.2	16.9	12.8	13.4	11.0	9.7	7.6

CR=Crude (all ages) Rate (N/100,000 person-years)
 ESR=Age-Standardised Rate, using the European Standard Population (N/100,000 person-years)
 WSR=Age-Standardised Rate, using the World Standard Population (N/100,000 person-years)

Figure 2: Cervical Cancer: Age-specific incidence rates, 2014-2018



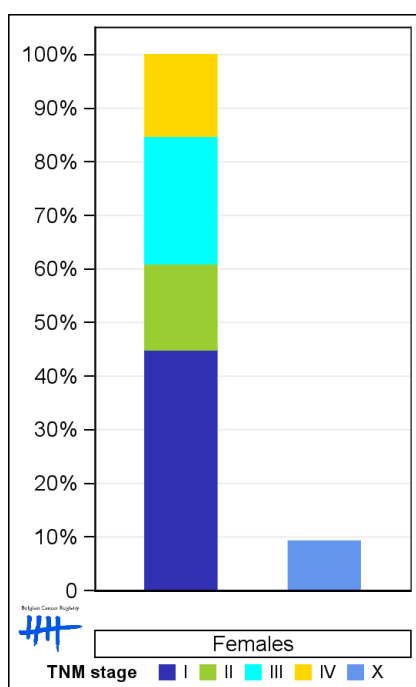
1.3. Combined stage

Table 3: Cervical Cancer: Distribution of combined stage, Belgium 2018

	Stage I	Stage II	Stage III	Stage IV	Stage X	Stage NA	Total
Females							
N	257	92	136	87	58	4	634
%	40.5	14.5	21.5	13.7	9.1	0.6	100

Staging according to the TNM 8th edition (Ref: Brierley JD, Gospodarowicz MK, Wittekind Ch. TNM classification of malignant tumours, UICC 8th edition)
 Combined TNM stage : compilation of pathological (pTNM) and clinical (cTNM) stage. pTNM prevails over cTNM, except when cTNM stage is IV
 Stage X: diagnoses with an unknown stage
 Stage NA: diagnoses with a histological diagnosis where no stage can be evaluated (Not Applicable)

Figure 3: Cervical Cancer: Bar chart of known combined stage, Belgium 2018



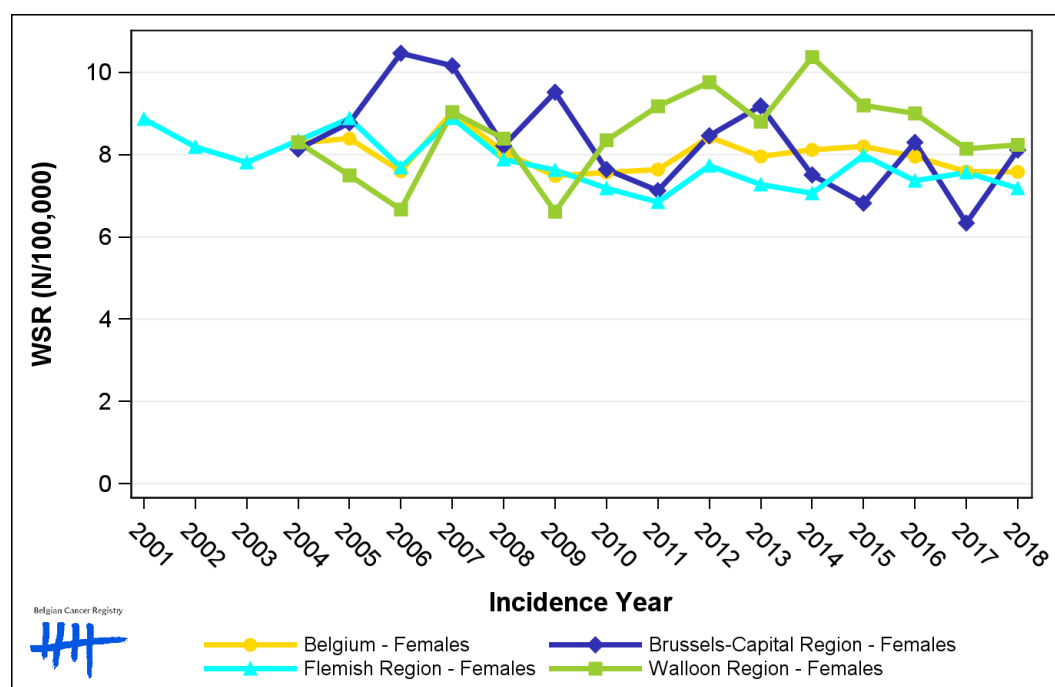
1.4. Trends in incidence

Table 4: Cervical Cancer: Age-standardised incidence rates (WSR) and average annual percentage change (AAPC) by incidence year and region

Females	2004	2005	2006	2007	2008	2009	2010	2011	2012	2013	2014	2015	2016	2017	2018	AAPC	95% CI
Belgium	8.3	8.4	7.6	9.0	8.1	7.5	7.6	7.6	8.4	8.0	8.1	8.2	8.0	7.6	7.6	-0.4	[-1.1; 0.3]
Brussels-Capital Region	8.1	8.8	10.5	10.2	8.2	9.5	7.6	7.1	8.5	9.2	7.5	6.8	8.3	6.3	8.1	-1.8	[-3.3; -0.2]
Flemish Region	8.3	8.9	7.7	8.9	7.9	7.6	7.2	6.8	7.7	7.3	7.1	8.0	7.4	7.6	7.2	-1.1	[-1.8; -0.4]
Walloon Region	8.3	7.5	6.7	9.0	8.4	6.6	8.3	9.2	9.8	8.8	10.4	9.2	9.0	8.1	8.2	1.2	[-0.3; 2.7]

WSR=Age-Standardised Rate, using the World Standard Population (N/100,000 person-years)
 AAPC = Average Annual Percentage Change over the 2004-2018 period

Figure 4: Cervical Cancer: Age-standardised incidence rates (WSR) by incidence year and region



1.5. Incidence by broad age groups

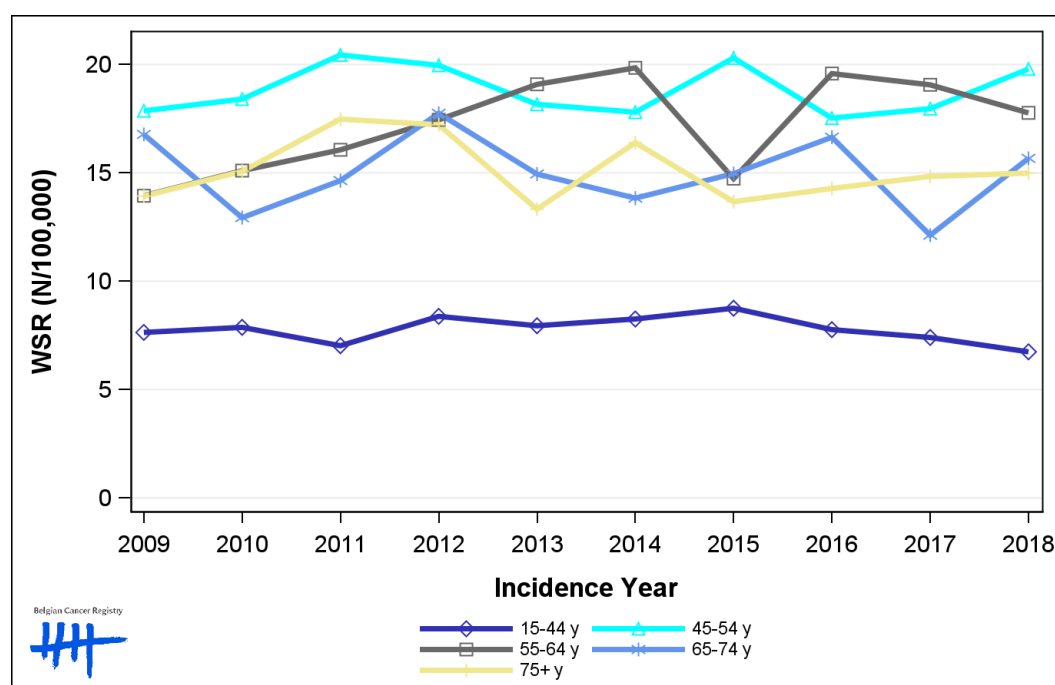
Table 5: Cervical Cancer: Number of new diagnoses and age-standardised incidence rates (WSR) by broad age groups and incidence year, Belgium

	N										WSR									
	2009	2010	2011	2012	2013	2014	2015	2016	2017	2018	2009	2010	2011	2012	2013	2014	2015	2016	2017	2018
Females																				
All ages	591	600	625	680	632	663	648	647	631	634	7.5	7.6	7.6	8.4	8.0	8.1	8.2	8.0	7.6	7.6
0-14 y	0	0	0	0	0	0	0	0	0	0	0.0	0.0	0.0	0.0	0.0	0.0	0.0	0.0	0.0	0.0
15-44 y	200	201	177	213	202	208	221	195	188	171	7.6	7.9	7.0	8.4	7.9	8.3	8.8	7.8	7.4	6.7
45-54 y	139	144	162	158	145	141	157	137	144	154	17.9	18.4	20.4	20.0	18.2	17.8	20.3	17.5	18.0	19.8
55-64 y	91	101	110	120	132	139	105	142	141	133	13.9	15.1	16.1	17.5	19.1	19.9	14.7	19.6	19.1	17.8
65-74 y	82	63	72	90	77	73	81	92	69	88	16.8	12.9	14.6	17.8	14.9	13.8	15.0	16.6	12.1	15.7
75+ y	79	91	104	99	76	102	84	81	89	88	13.9	15.1	17.5	17.2	13.3	16.4	13.7	14.3	14.8	15.0

N=Number of invasive tumours

WSR=Age-Standardised Rate, using the World Standard Population (N/100,000 person-years)

Figure 5: Cervical Cancer: Age-standardised incidence rates (WSR) versus incidence year by broad age groups, Belgium



Belgian Cancer Registry

Legend:
 15-44 y (dark blue diamond)
 45-54 y (cyan triangle)
 55-64 y (black square)
 65-74 y (light blue asterisk)
 75+ y (yellow plus)

2. Relative survival

Table 6: Cervical Cancer: 5-year relative survival proportion by age group and region, Belgium 2014-2018

	5-year relative survival 2014-2018 (%)		
	Females		
	N at risk	estimate	95% CI
Overall	3,193	69.8	[67.8, 71.8]
Age group			
15-44 years	975	86.4	[83.7, 88.7]
45-64 years	1,376	71.0	[68.1, 73.9]
65+ years	842	46.1	[41.2, 51.1]
Region			
Brussels-Capital Region	292	70.0	[62.4, 76.7]
Flemish Region	1,744	72.5	[69.8, 75.1]
Walloon Region	1,157	65.7	[62.3, 69.1]

Figure 6: Cervical Cancer: relative survival proportion, Belgium 2014-2018

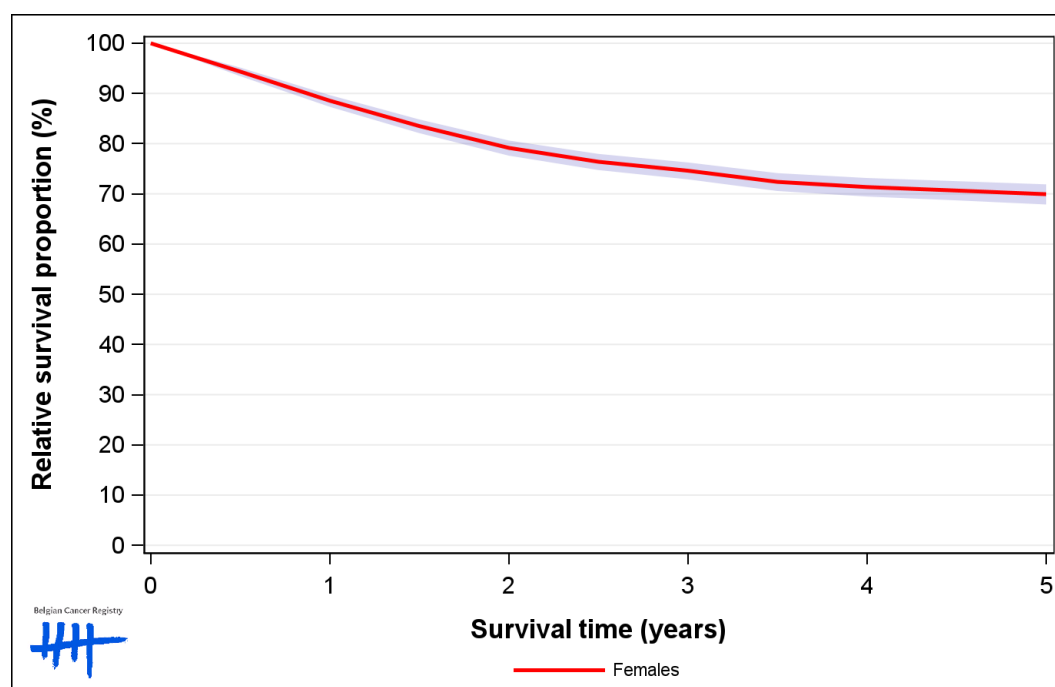


Figure 7: Cervical Cancer: relative survival proportion by age group, Belgium 2014-2018

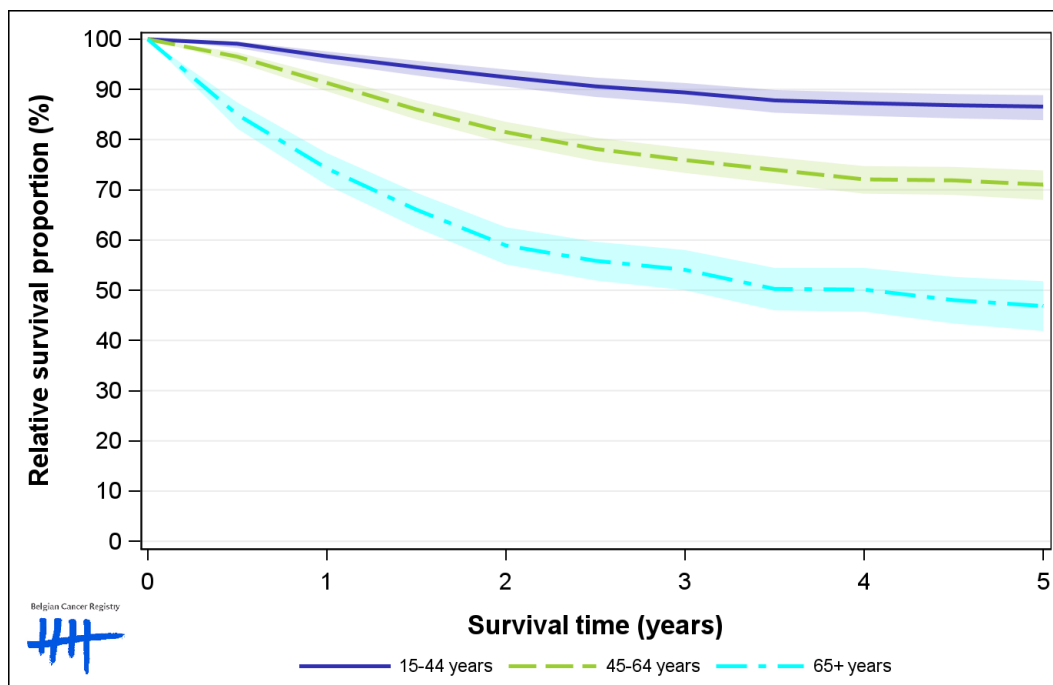


Figure 8: Cervical Cancer: relative survival proportion by region, Belgium 2014-2018

