



Belgian Cancer Registry



Cancer Fact Sheet **Corpus Uteri Cancer**

ICD10 : C54

Belgium 2018

1. Cancer Incidence

1.1. Number of new diagnoses and incidence rates

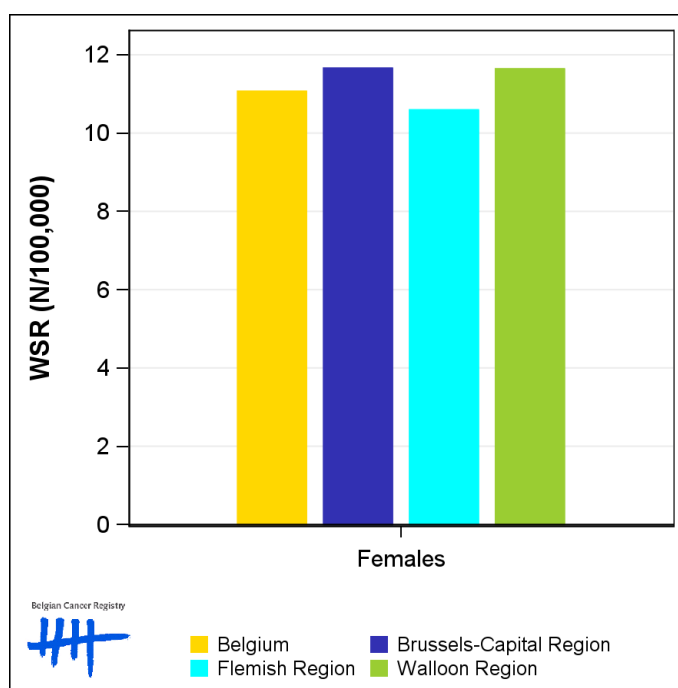
Table 1: Corpus Uteri Cancer: Average age at diagnosis, number of new cancer diagnoses (N), crude rate (CR), age-standardised incidence rates (ESR and WSR) and cumulative risk by region, 2018

Females	Age (years)	N	CR	ESR	WSR	CRi
Belgium	69.7	1,429	24.7	16.1	11.1	1.44
Brussels-Capital Region	67.8	120	19.6	16.7	11.7	1.43
Flemish Region	69.9	826	24.9	15.4	10.6	1.35
Walloon Region	69.7	483	26.0	17.0	11.6	1.60

CR=Crude (all ages) Rate (N/100,000 person-years)
 ESR=Age-Standardised Rate, using the European Standard Population (N/100,000 person-years)
 WSR=Age-Standardised Rate, using the World Standard Population (N/100,000 person-years)
 CRi=Cumulative Risk for 0-74 years (%)



Figure 1: Corpus Uteri Cancer: Age-standardised incidence rates by region, 2018



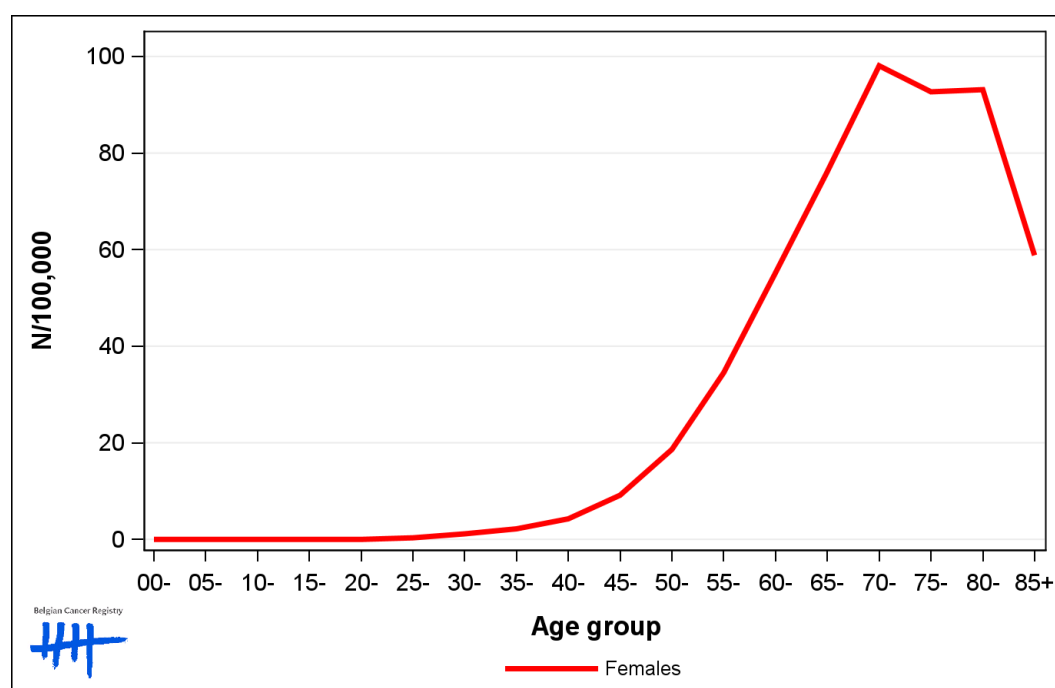
1.2. Age-specific incidence rates

Table 2: Corpus Uteri Cancer: Age-specific incidence rates, crude rate (CR) and age-standardised incidence rates (ESR and WSR), Belgium 2018

	00-	05-	10-	15-	20-	25-	30-	35-	40-	45-	50-	55-	60-	65-	70-	75-	80-	85+	CR	ESR	WSR
Females	0.0	0.0	0.0	0.0	0.0	0.3	1.1	1.9	3.6	10.8	14.5	34.0	54.5	70.3	99.5	84.9	105.9	52.1	24.7	16.1	11.1

CR=Crude (all ages) Rate (N/100,000 person-years)
 ESR=Age-Standardised Rate, using the European Standard Population (N/100,000 person-years)
 WSR=Age-Standardised Rate, using the World Standard Population (N/100,000 person-years)

Figure 2: Corpus Uteri Cancer: Age-specific incidence rates, 2014-2018



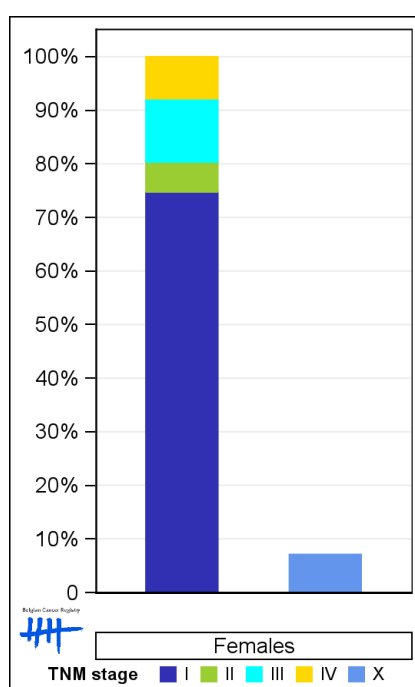
1.3. Combined stage

Table 3: Corpus Uteri Cancer: Distribution of combined stage, Belgium 2018

	Stage I	Stage II	Stage III	Stage IV	Stage X	Stage NA	Total
Females							
N	939	70	149	98	96	77	1,429
%	65.7	4.9	10.4	6.9	6.7	5.4	100

Staging according to the TNM 8th edition (Ref: Brierley JD, Gospodarowicz MK, Wittekind Ch. TNM classification of malignant tumours, UICC 8th edition)
 Combined TNM stage : compilation of pathological (pTNM) and clinical (cTNM) stage. pTNM prevails over cTNM, except when cTNM stage is IV
 Stage X: diagnoses with an unknown stage
 Stage NA: diagnoses with a histological diagnosis where no stage can be evaluated (Not Applicable)

Figure 3: Corpus Uteri Cancer: Bar chart of known combined stage, Belgium 2018



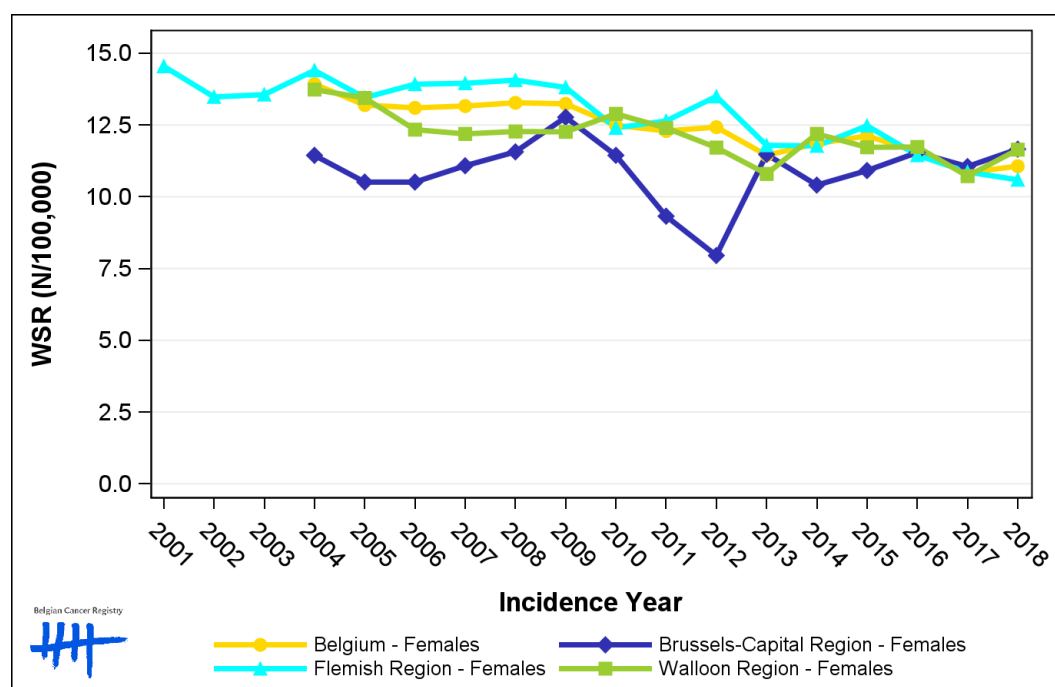
1.4. Trends in incidence

Table 4: Corpus Uteri Cancer: Age-standardised incidence rates (WSR) and average annual percentage change (AAPC) by incidence year and region

Females	2004	2005	2006	2007	2008	2009	2010	2011	2012	2013	2014	2015	2016	2017	2018	AAPC	95% CI
Belgium	13.9	13.2	13.1	13.2	13.3	13.2	12.5	12.3	12.4	11.4	11.9	12.1	11.6	10.8	11.1	-1.5	[-1.9; -1.2]
Brussels-Capital Region	11.4	10.5	10.5	11.1	11.6	12.8	11.4	9.3	8.0	11.5	10.4	10.9	11.5	11.1	11.7	-0.1	[-1.5; 1.5]
Flemish Region	14.4	13.5	13.9	14.0	14.1	13.8	12.4	12.6	13.5	11.8	11.8	12.5	11.4	10.9	10.6	-2.0	[-2.5; -1.4]
Walloon Region	13.7	13.4	12.3	12.2	12.3	12.3	12.9	12.4	11.7	10.8	12.2	11.7	11.7	10.7	11.6	-1.2	[-1.7; -0.6]

WSR=Age-Standardised Rate, using the World Standard Population (N/100,000 person-years)
 AAPC = Average Annual Percentage Change over the 2004-2018 period

Figure 4: Corpus Uteri Cancer: Age-standardised incidence rates (WSR) by incidence year and region



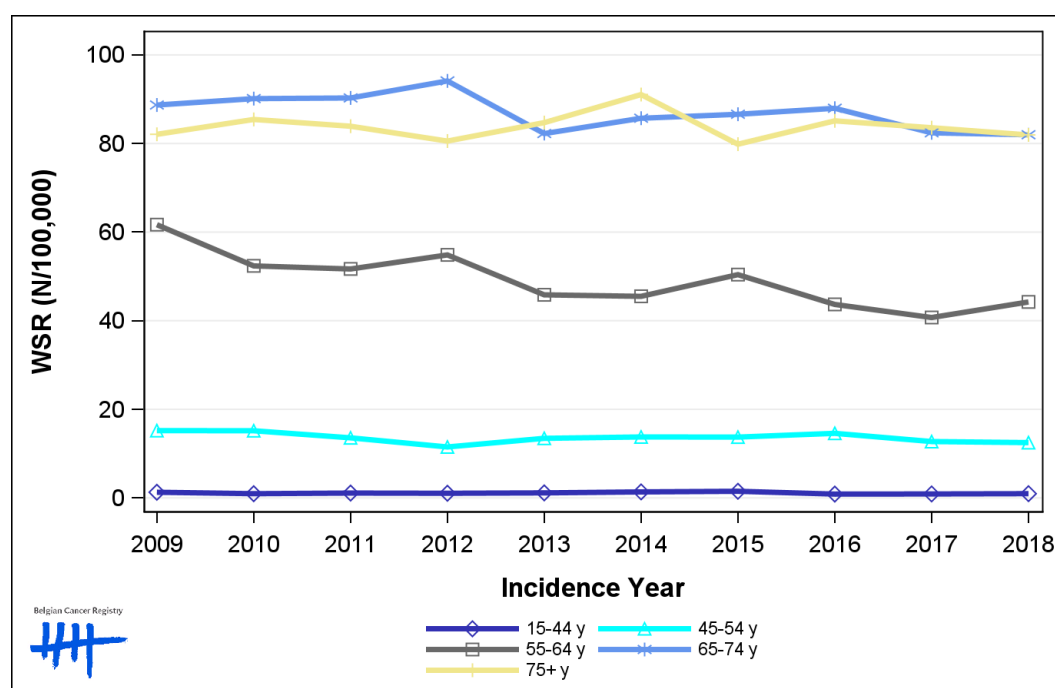
1.5. Incidence by broad age groups

Table 5: Corpus Uteri Cancer: Number of new diagnoses and age-standardised incidence rates (WSR) by broad age groups and incidence year, Belgium

	N										WSR									
	2009	2010	2011	2012	2013	2014	2015	2016	2017	2018	2009	2010	2011	2012	2013	2014	2015	2016	2017	2018
Females																				
All ages	1,462	1,417	1,428	1,448	1,385	1,460	1,456	1,439	1,398	1,429	13.2	12.5	12.3	12.4	11.4	11.9	12.1	11.6	10.8	11.1
0-14 y	0	0	0	0	0	0	0	0	0	0	0.0	0.0	0.0	0.0	0.0	0.0	0.0	0.0	0.0	0.0
15-44 y	35	26	28	27	28	35	40	23	23	25	1.3	1.0	1.1	1.1	1.1	1.4	1.5	0.9	0.9	1.0
45-54 y	121	122	111	95	112	115	115	119	106	100	15.2	15.2	13.6	11.5	13.5	13.8	13.7	14.6	12.7	12.5
55-64 y	399	346	351	375	315	315	356	312	297	326	61.7	52.4	51.7	54.9	45.8	45.5	50.4	43.7	40.7	44.2
65-74 y	437	438	454	478	426	453	466	488	476	491	88.7	90.1	90.3	94.1	82.3	85.7	86.6	88.0	82.4	82.0
75+ y	470	485	484	473	504	542	479	497	496	487	82.1	85.4	83.9	80.6	84.7	91.1	79.9	85.1	83.6	81.9

N=Number of invasive tumours
WSR=Age-Standardised Rate, using the World Standard Population (N/100,000 person-years)

Figure 5: Corpus Uteri Cancer: Age-standardised incidence rates (WSR) versus incidence year by broad age groups, Belgium



2. Relative survival

Table 6: Corpus Uteri Cancer: 5-year relative survival proportion by age group and region, Belgium 2014-2018

	5-year relative survival 2014-2018 (%)		
	Females		
	N at risk	estimate	95% CI
Overall	7,136	81.7	[80.2, 83.2]
Age group			
15-54 years	688	88.1	[84.9, 90.7]
55-69 years	2,770	86.7	[84.9, 88.4]
70+ years	3,678	76.2	[73.6, 78.8]
Region			
Brussels-Capital Region	549	76.9	[70.8, 82.5]
Flemish Region	4,271	82.8	[80.9, 84.7]
Walloon Region	2,316	80.6	[77.8, 83.2]

Figure 6: Corpus Uteri Cancer: relative survival proportion, Belgium 2014-2018

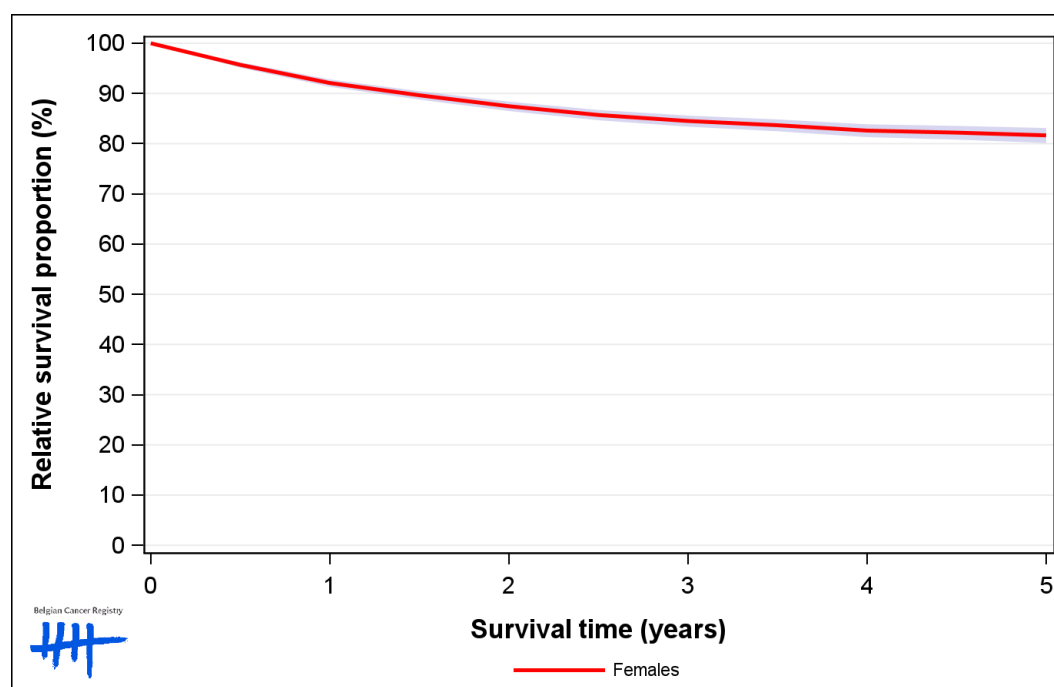


Figure 7: Corpus Uteri Cancer: relative survival proportion by age group, Belgium 2014-2018

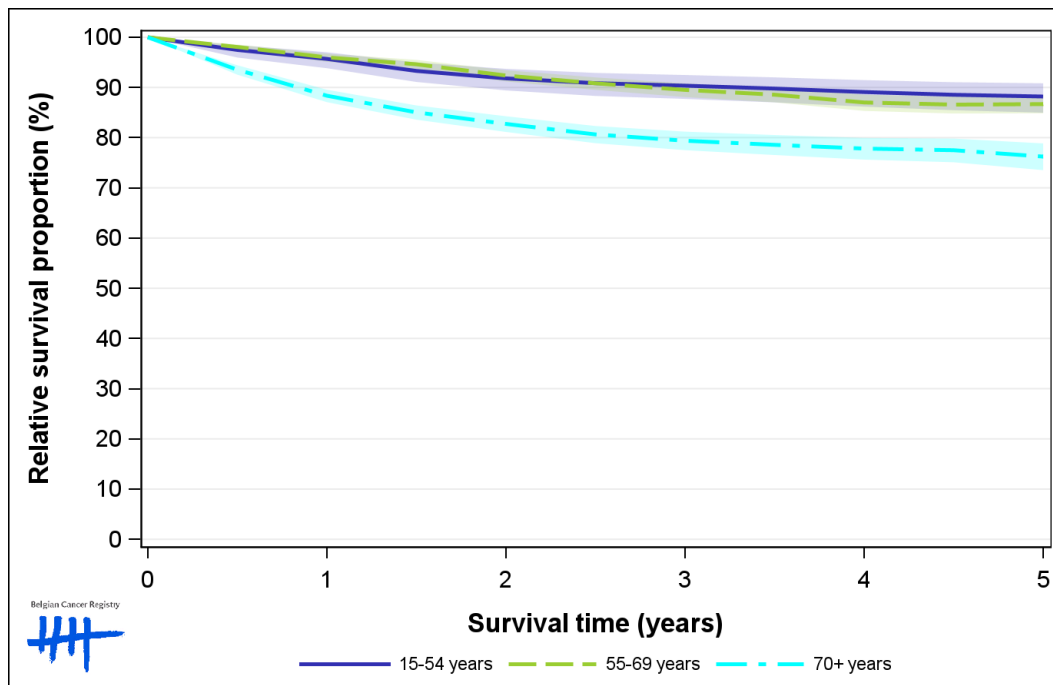


Figure 8: Corpus Uteri Cancer: relative survival proportion by region, Belgium 2014-2018

