

Belgian Cancer Registry



Incidence Fact Sheet

Corpus Uteri Cancer

ICD10 : C54

Belgium 2013

Publication Date :

22/09/2015

1-Incidence 2013 by region (Corpus Uteri Cancer)

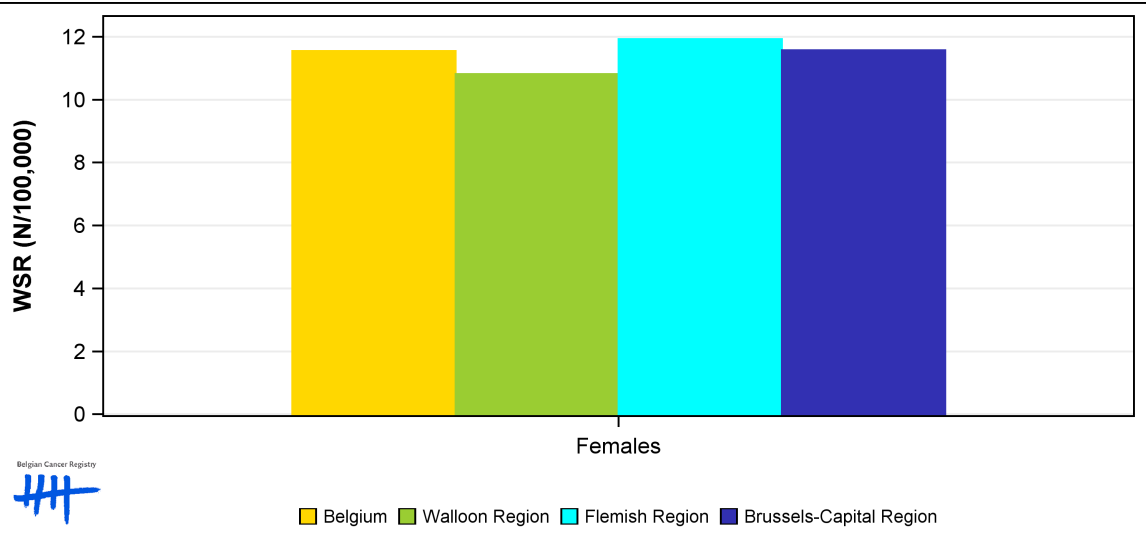
Females	Age	N	CR	ESR	WSR	CRi
Belgium	69.5	1,395	24.7	16.7	11.5	1.47
Walloon Region	69.2	412	22.5	15.5	10.8	1.43
Flemish Region	69.5	859	26.6	17.3	11.9	1.49
Brussels-Capital Region	70.3	124	20.9	17.0	11.6	1.46

Age=Average Age at Diagnosis (years)
 N=Number of invasive tumours
 CR=Crude (all ages) Rate (N/100,000 person-years)
 ESR=Age-Standardised Rate, using the European Standard Population (N/100,000 person-years)
 WSR=Age-Standardised Rate, using the World Standard Population (N/100,000 person-years)
 CRi=Cumulative Risk for 0-74 years (%)

Belgian Cancer Registry



2-Incidence 2013 (WSR N/100,000) by region (Corpus Uteri Cancer)

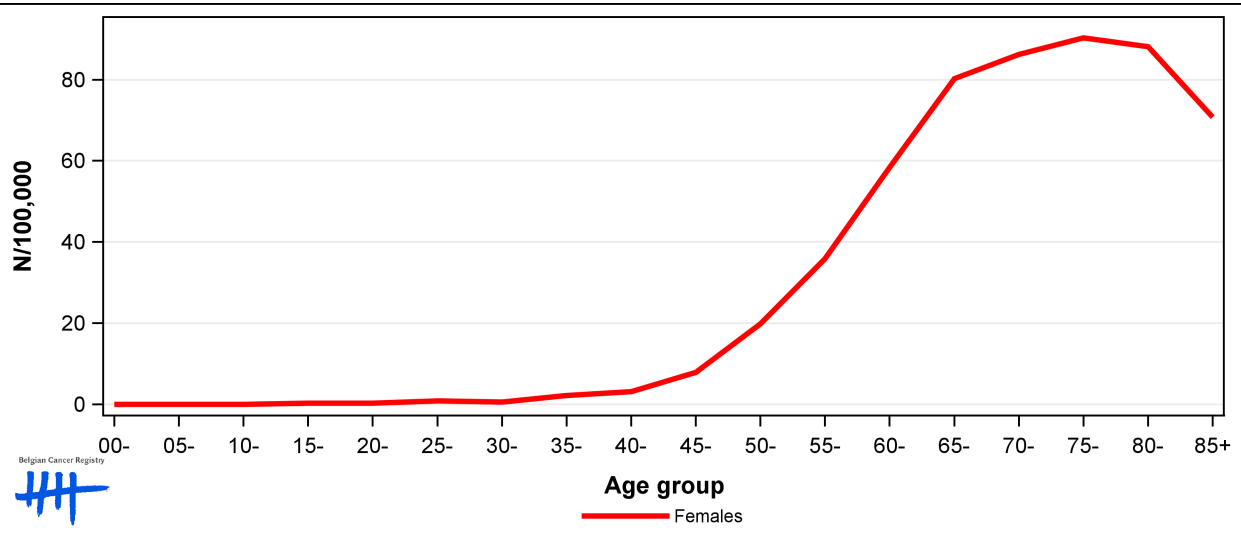


Legend: Belgium (yellow), Walloon Region (green), Flemish Region (cyan), Brussels-Capital Region (dark blue)

3-Age-specific and age-standardised incidence rates, Belgium 2013 (Corpus Uteri Cancer)

	00-	05-	10-	15-	20-	25-	30-	35-	40-	45-	50-	55-	60-	65-	70-	75-	80-	85+	CR	ESR	WSR
Females	0.0	0.0	0.0	0.3	0.3	0.9	0.5	2.2	3.1	7.9	19.9	35.9	58.4	80.3	86.2	90.3	88.1	70.7	24.7	16.7	11.5

CR=Crude (all ages) Rate (N/100,000 person-years)
 ESR=Age-Standardised Rate, using the European Standard Population (N/100,000 person-years)
 WSR=Age-Standardised Rate, using the World Standard Population (N/100,000 person-years)

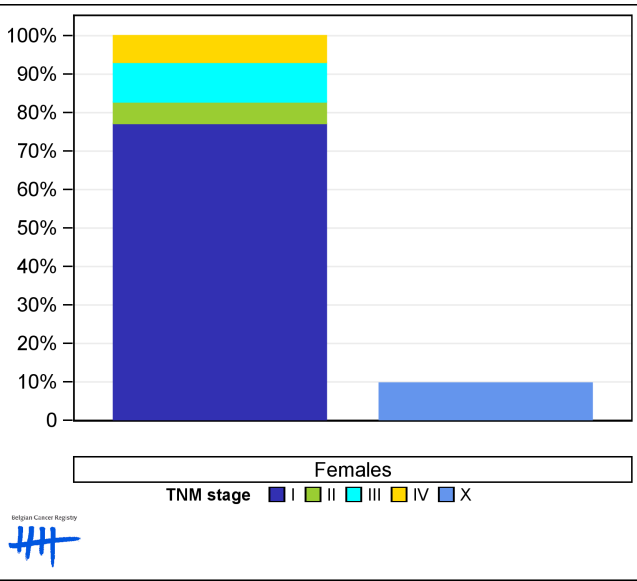


4-Combined TNM stage, Belgium 2013 (Corpus Uteri Cancer)

	Stage I	Stage II	Stage III	Stage IV	Stage X	Stage NA	Total
Females (N)	921	67	123	82	128	74	1,395
Females (%)	66.0	4.8	8.8	5.9	9.2	5.3	100

Staging according to the TNM 7th edition (Ref:Sobin LH, Gospodarowicz MK, Wittekind Ch. TNM classification of malignant tumours, UICC 7th edition)
 Combined TNM stage : compilation of pathological (pTNM) and clinical (cTNM) stage. pTNM prevails over cTNM, except when cTNM stage is IV
 Stage X: diagnoses with an unknown stage
 Stage NA: diagnoses with a histological diagnosis where no stage can be evaluated (Not Applicable)

5-Percentage of combined TNM stage (known stages and stage X are reported separately), Belgium 2013 (Corpus Uteri Cancer)

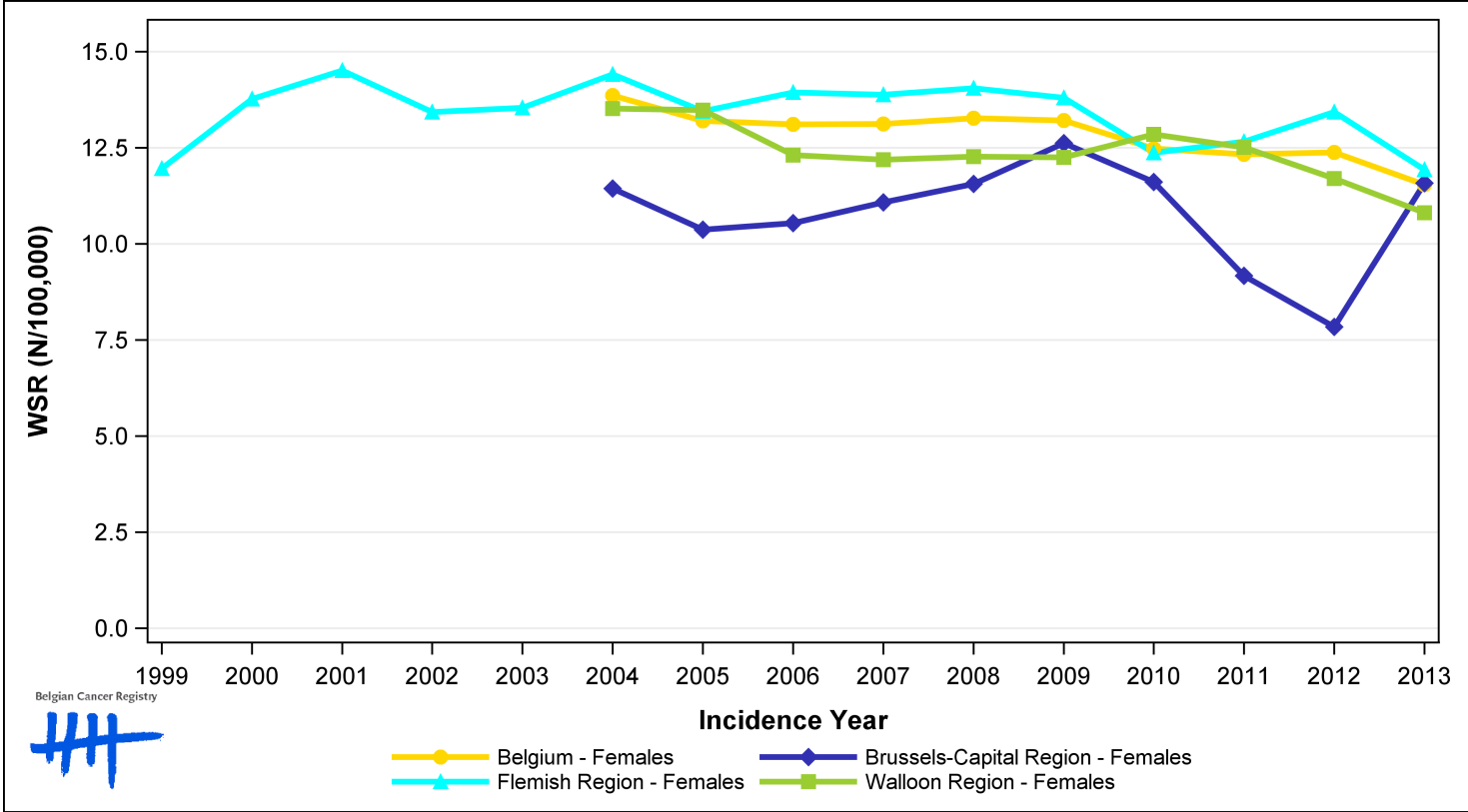


6-Incidence (WSR N/100,000) by region and incidence year (Corpus Uteri Cancer)

Females	1999	2000	2001	2002	2003	2004	2005	2006	2007	2008	2009	2010	2011	2012	2013	EAPC	p-value
Belgium						13.9	13.2	13.1	13.1	13.3	13.2	12.5	12.3	12.4	11.5	-1.5	<0.001
Walloon Region						13.5	13.5	12.3	12.2	12.3	12.3	12.9	12.5	11.7	10.8	*	*
Flemish Region	12.0	13.8	14.5	13.4	13.5	14.4	13.5	13.9	13.9	14.1	13.8	12.4	12.7	13.4	11.9	*	*
Brussels-Capital Region						11.4	10.4	10.5	11.1	11.6	12.6	11.6	9.2	7.8	11.6	-1.4	0.389

WSR=Age-Standardised Rate, using the World Standard Population (N/100,000 person-years)
 EAPC = Estimated Annual Percentage Change : increase/decrease of WSR incidence rate as a constant rate over the 2004-2013 period (except for the Flemish region : 1999-2013).
 * = EAPC estimate is not available. An increase/decrease as a constant rate over the studied period is not observed.

7-Trends in incidence (WSR N/100,000) by region and incidence year (Corpus Uteri Cancer)



8-Number of invasive tumours (N) and age-standardised incidence rate (WSR N/100,000) by age group and incidence year, Females (Corpus Uteri Cancer)

N											WSR									
Females	2004	2005	2006	2007	2008	2009	2010	2011	2012	2013	2004	2005	2006	2007	2008	2009	2010	2011	2012	2013
All ages	1,423	1,378	1,350	1,391	1,465	1,460	1,415	1,432	1,444	1,395	13.9	13.2	13.1	13.1	13.3	13.2	12.5	12.3	12.4	11.5
0-14 years	0	0	0	0	0	0	0	0	0	0	0.0	0.0	0.0	0.0	0.0	0.0	0.0	0.0	0.0	0.0
15-44 years	31	27	34	33	39	35	26	28	26	27	1.1	1.0	1.2	1.2	1.5	1.3	1.0	1.1	1.0	1.1
45-54 years	126	126	126	124	124	121	122	111	96	111	17.1	16.8	16.6	16.1	15.9	15.2	15.2	13.6	11.6	13.3
55-64 years	363	356	354	367	357	397	344	352	374	324	65.3	62.6	60.5	61.1	56.4	61.4	52.1	51.8	54.7	47.1
65-74 years	486	445	458	446	461	437	439	456	475	428	93.6	86.3	90.4	87.6	93.0	88.7	90.4	90.7	93.6	82.6
75+ years	417	424	378	421	484	470	484	485	473	505	79.3	79.8	70.0	77.6	86.3	82.2	85.2	84.1	80.5	84.9

N=Number of invasive tumours
 WSR=Age-Standardised Rate, using the World Standard Population (N/100,000 person-years)

