

Belgian Cancer Registry



Incidence Fact Sheet

Female Breast Cancer

ICD10 : C50

Belgium 2013

Publication Date :
22/09/2015

1-Incidence 2013 by region (Female Breast Cancer)

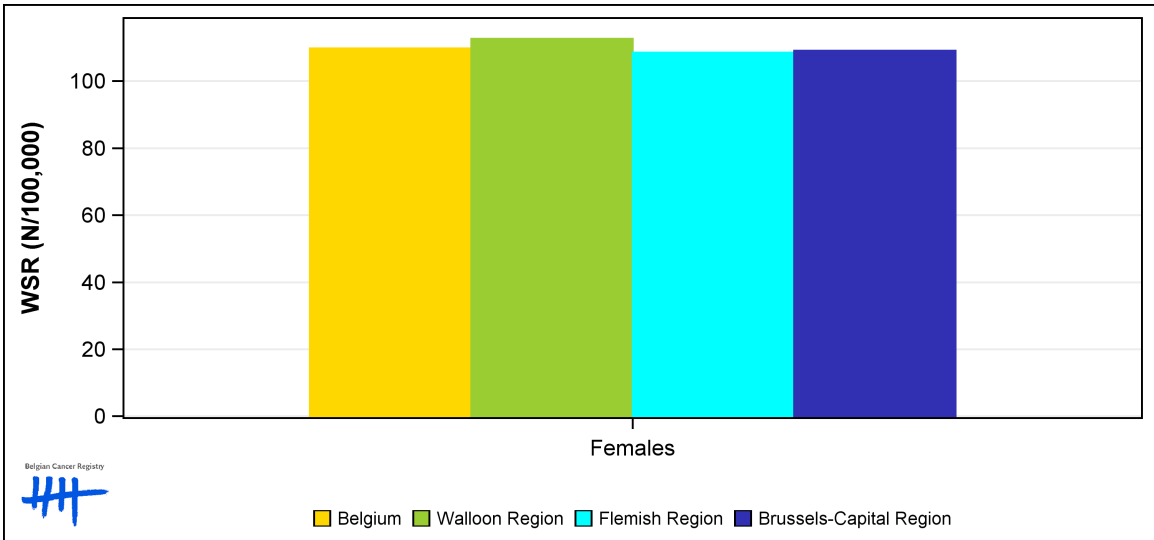
Females	Age	N	CR	ESR	WSR	CRi
Belgium	62.4	10,695	189.2	149.0	109.8	11.81
Walloon Region	62.6	3,556	194.5	153.3	112.7	12.27
Flemish Region	62.3	6,191	191.6	146.8	108.5	11.54
Brussels-Capital Region	62.4	948	159.9	149.3	109.1	12.10

Age=Average Age at Diagnosis (years)
 N=Number of invasive tumours
 CR=Crude (all ages) Rate (N/100,000 person-years)
 ESR=Age-Standardised Rate, using the European Standard Population (N/100,000 person-years)
 WSR=Age-Standardised Rate, using the World Standard Population (N/100,000 person-years)
 CRi=Cumulative Risk for 0-74 years (%)

Belgian Cancer Registry



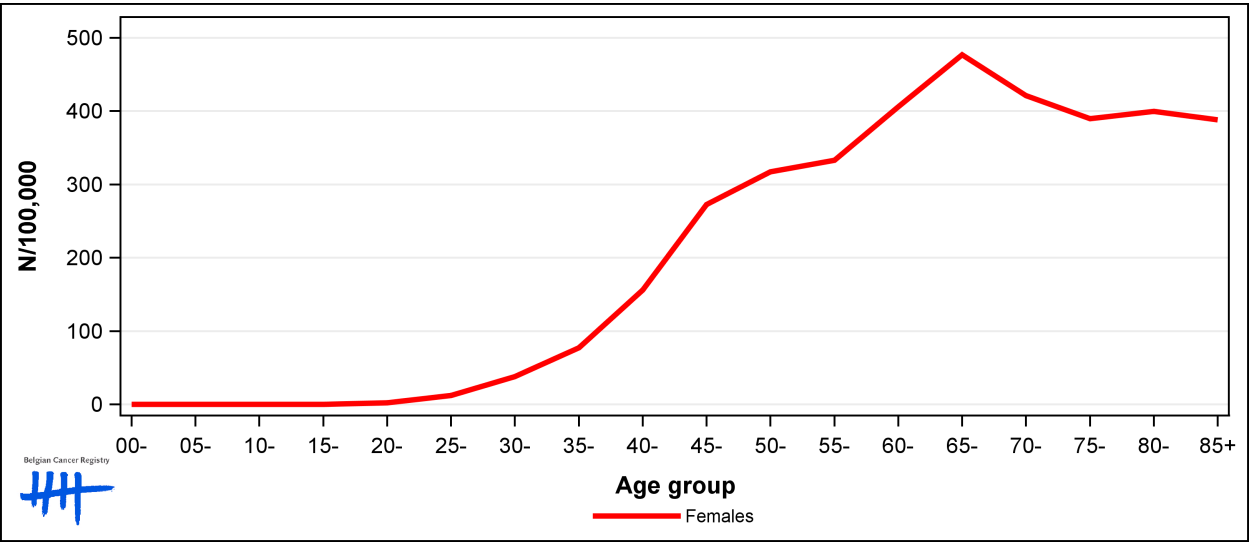
2-Incidence 2013 (WSR N/100,000) by region (Female Breast Cancer)



3-Age-specific and age-standardised incidence rates, Belgium 2013 (Female Breast Cancer)

	00-	05-	10-	15-	20-	25-	30-	35-	40-	45-	50-	55-	60-	65-	70-	75-	80-	85+	CR	ESR	WSR
Females	0.0	0.0	0.0	0.0	2.3	12.3	38.1	77.3	156.2	272.4	317.1	333.0	405.9	477.1	421.3	389.5	399.6	388.0	189.2	149.0	109.8

CR=Crude (all ages) Rate (N/100,000 person-years)
 ESR=Age-Standardised Rate, using the European Standard Population (N/100,000 person-years)
 WSR=Age-Standardised Rate, using the World Standard Population (N/100,000 person-years)

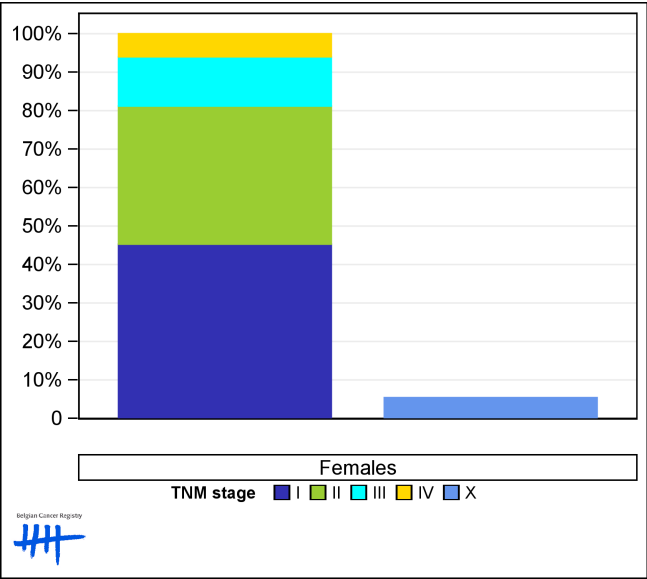


4-Combined TNM stage, Belgium 2013 (Female Breast Cancer)

	Stage I	Stage II	Stage III	Stage IV	Stage X	Stage NA	Total
Females (N)	4,573	3,632	1,288	606	572	24	10,695
Females (%)	42.8	34.0	12.0	5.7	5.3	0.2	100

Staging according to the TNM 7th edition (Ref:Sobin LH, Gospodarowicz MK, Wittekind Ch. TNM classification of malignant tumours, UICC 7th edition)
 Combined TNM stage : compilation of pathological (pTNM) and clinical (cTNM) stage. pTNM prevails over cTNM, except when cTNM stage is IV
 Stage X: diagnoses with an unknown stage
 Stage NA: diagnoses with a histological diagnosis where no stage can be evaluated (Not Applicable)

5-Percentage of combined TNM stage (known stages and stage X are reported separately), Belgium 2013 (Female Breast Cancer)

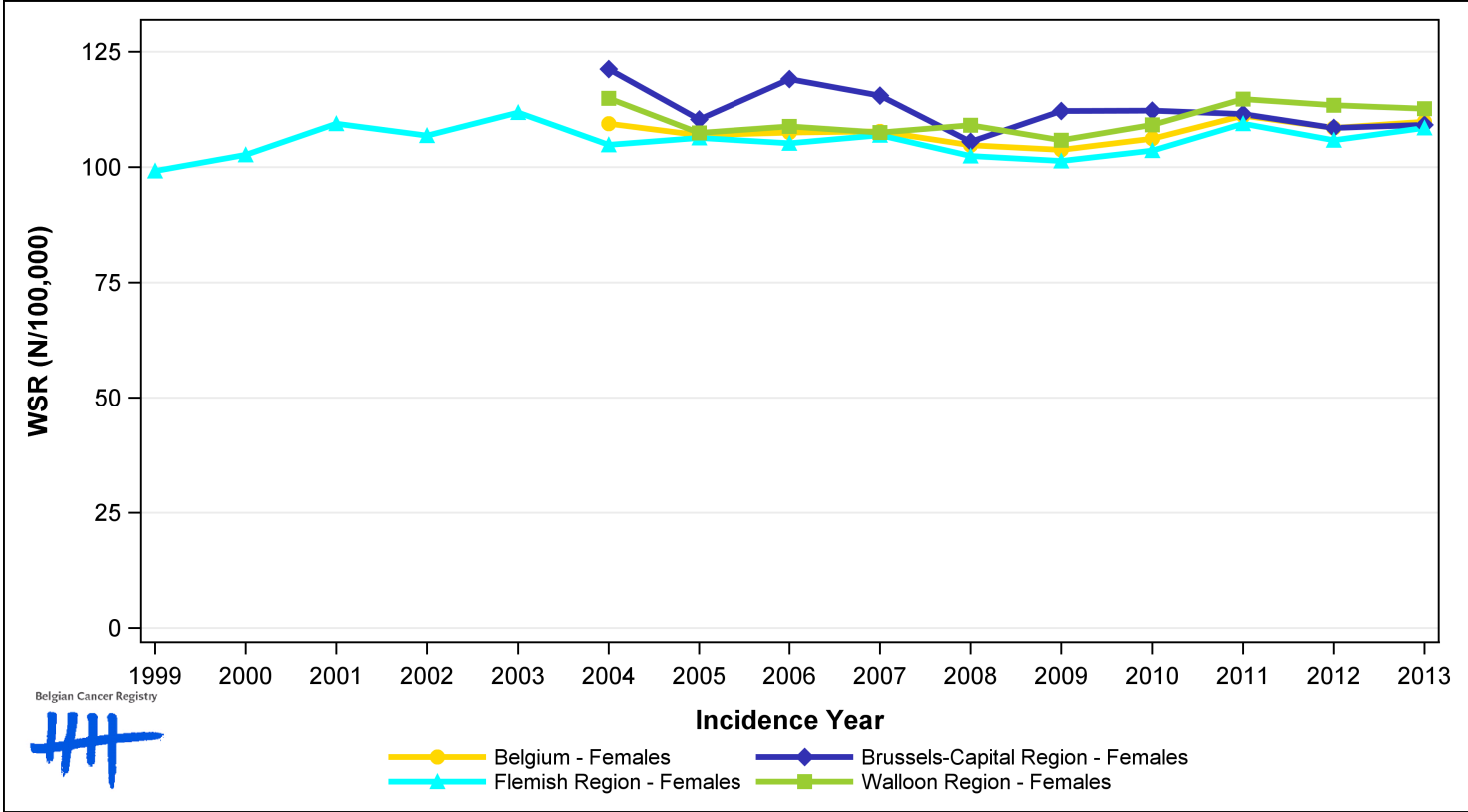


6-Incidence (WSR N/100,000) by region and incidence year (Female Breast Cancer)

Females	1999	2000	2001	2002	2003	2004	2005	2006	2007	2008	2009	2010	2011	2012	2013	EAPC	p-value
Belgium						109.4	107.0	107.5	107.7	104.7	103.7	106.2	111.2	108.5	109.8	0.2	0.555
Walloon Region						114.9	107.4	108.9	107.5	109.1	105.8	109.2	114.7	113.4	112.7	<i>0.3</i>	<i>0.403</i>
Flemish Region	99.2	102.7	109.4	106.8	111.8	104.8	106.3	105.2	106.9	102.4	101.3	103.6	109.4	105.9	108.5	<i>0.1</i>	<i>0.532</i>
Brussels-Capital Region						121.3	110.3	119.1	115.5	105.5	112.2	112.3	111.5	108.5	109.1	<i>-0.9</i>	<i>0.060</i>

WSR=Age-Standardised Rate, using the World Standard Population (N/100,000 person-years)
 EAPC = Estimated Annual Percentage Change : increase/decrease of WSR incidence rate as a constant rate over the 2004-2013 period (except for the Flemish region : 1999-2013).
 EAPC value in italics is provided despite the fact that the linearity assumption is questionable. EAPC value should be interpreted with caution.

7-Trends in incidence (WSR N/100,000) by region and incidence year (Female Breast Cancer)



8-Number of invasive tumours (N) and age-standardised incidence rate (WSR N/100,000) by age group and incidence year, Females (Female Breast Cancer)

Females	N										WSR									
	2004	2005	2006	2007	2008	2009	2010	2011	2012	2013	2004	2005	2006	2007	2008	2009	2010	2011	2012	2013
All ages	9,382	9,381	9,490	9,669	9,577	9,602	9,910	10,537	10,551	10,695	109.4	107.0	107.5	107.7	104.7	103.7	106.2	111.2	108.5	109.8
0-14	0	0	0	0	0	0	0	0	0	0	0.0	0.0	0.0	0.0	0.0	0.0	0.0	0.0	0.0	0.0
15-39	453	465	453	527	441	464	494	526	431	465	20.5	21.2	20.9	24.4	20.4	21.4	22.9	24.7	20.4	21.9
40-49	1,675	1,732	1,724	1,730	1,717	1,634	1,634	1,675	1,652	1,703	217.2	221.1	218.4	217.9	215.3	204.6	204.6	209.1	206.9	214.3
50-59	2,395	2,355	2,360	2,289	2,304	2,268	2,379	2,553	2,460	2,478	358.7	346.0	339.8	325.5	323.9	315.9	325.2	343.9	325.6	324.2
60-69	2,179	1,997	2,100	2,169	2,144	2,235	2,342	2,506	2,652	2,715	426.2	389.9	408.0	410.8	395.1	404.1	415.3	432.1	441.1	436.4
70+	2,680	2,832	2,853	2,954	2,971	3,001	3,061	3,277	3,356	3,334	341.8	353.4	359.0	362.5	363.0	363.3	371.0	394.2	398.3	406.5

N=Number of invasive tumours
 WSR=Age-Standardised Rate, using the World Standard Population (N/100,000 person-years)

