

Belgian Cancer Registry



---

Incidence Fact Sheet

---

Female Breast Cancer

---

ICD10 : C50

---

Belgium 2014

---

Publication Date :  
24/10/2016

**1-Incidence 2014 by region (Female Breast Cancer)**

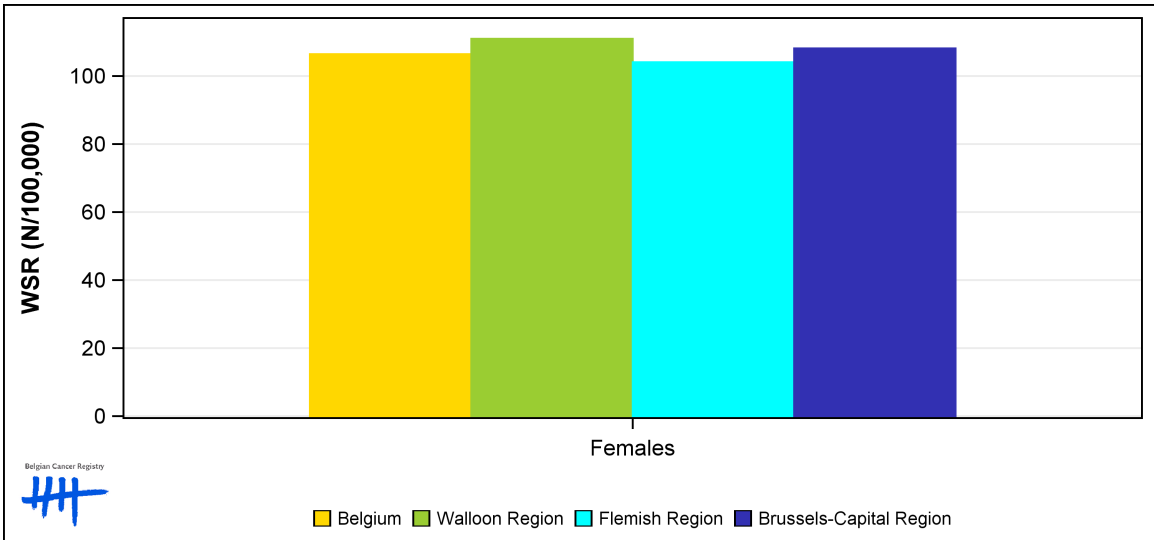
Females	Age	N	CR	ESR	WSR	CRi
<b>Belgium</b>	<b>62.5</b>	<b>10,466</b>	<b>184.4</b>	<b>144.6</b>	<b>106.4</b>	<b>11.47</b>
Walloon Region	62.3	3,486	190.0	150.6	110.9	12.09
Flemish Region	62.6	6,021	185.5	141.1	104.0	11.09
Brussels-Capital Region	63.0	959	160.7	148.2	108.1	11.96

Age=Average Age at Diagnosis (years)  
 N=Number of invasive tumours  
 CR=Crude (all ages) Rate (N/100,000 person-years)  
 ESR=Age-Standardised Rate, using the European Standard Population (N/100,000 person-years)  
 WSR=Age-Standardised Rate, using the World Standard Population (N/100,000 person-years)  
 CRi=Cumulative Risk for 0-74 years (%)

Belgian Cancer Registry



**2-Incidence 2014 (WSR N/100,000) by region (Female Breast Cancer)**

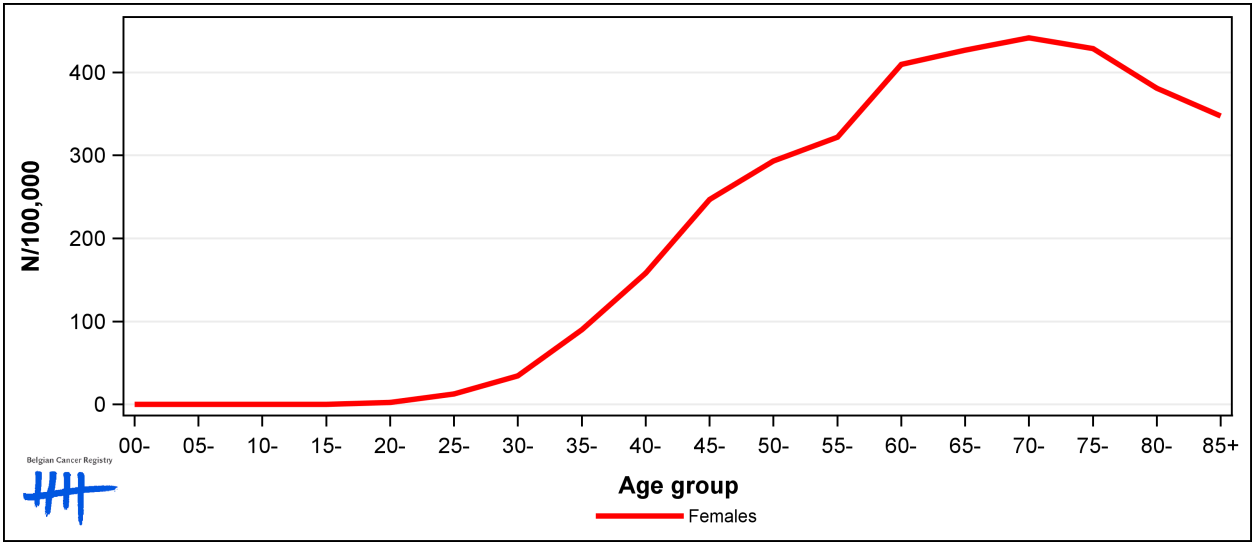


Belgium Walloon Region Flemish Region Brussels-Capital Region

### 3-Age-specific and age-standardised incidence rates, Belgium 2014 (Female Breast Cancer)

	00-	05-	10-	15-	20-	25-	30-	35-	40-	45-	50-	55-	60-	65-	70-	75-	80-	85+	CR	ESR	WSR
Females	0.0	0.0	0.0	0.0	2.3	12.7	34.5	90.1	158.1	246.6	293.0	322.0	409.8	426.7	441.7	428.6	380.7	347.7	184.4	144.6	106.4

CR=Crude (all ages) Rate (N/100,000 person-years)  
 ESR=Age-Standardised Rate, using the European Standard Population (N/100,000 person-years)  
 WSR=Age-Standardised Rate, using the World Standard Population (N/100,000 person-years)

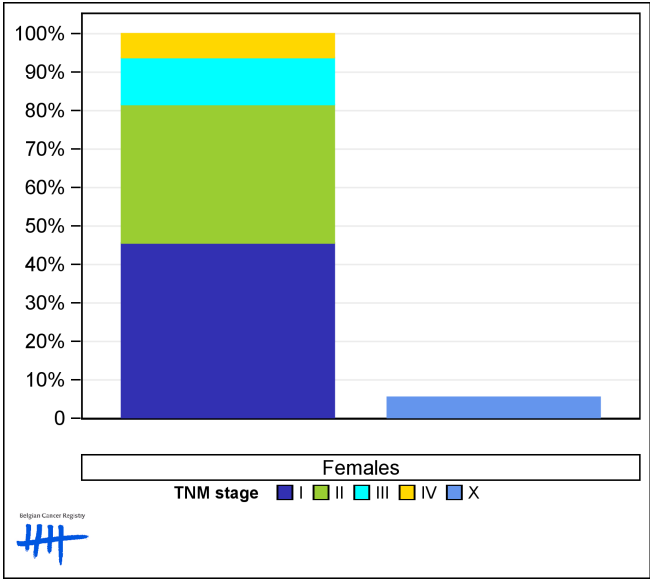


### 4-Combined TNM stage, Belgium 2014 (Female Breast Cancer)

	Stage I	Stage II	Stage III	Stage IV	Stage X	Stage NA	Total
Females (N)	4,497	3,553	1,202	614	578	22	10,466
Females (%)	43.0	33.9	11.5	5.9	5.5	0.2	100

Staging according to the TNM 7th edition (Ref:Sobin LH, Gospodarowicz MK, Wittekind Ch. TNM classification of malignant tumours, UICC 7th edition)  
 Combined TNM stage : compilation of pathological (pTNM) and clinical (cTNM) stage. pTNM prevails over cTNM, except when cTNM stage is IV  
 Stage X: diagnoses with an unknown stage  
 Stage NA: diagnoses with a histological diagnosis where no stage can be evaluated (Not Applicable)

### 5-Percentage of combined TNM stage (known stages and stage X are reported separately), Belgium 2014 (Female Breast Cancer)

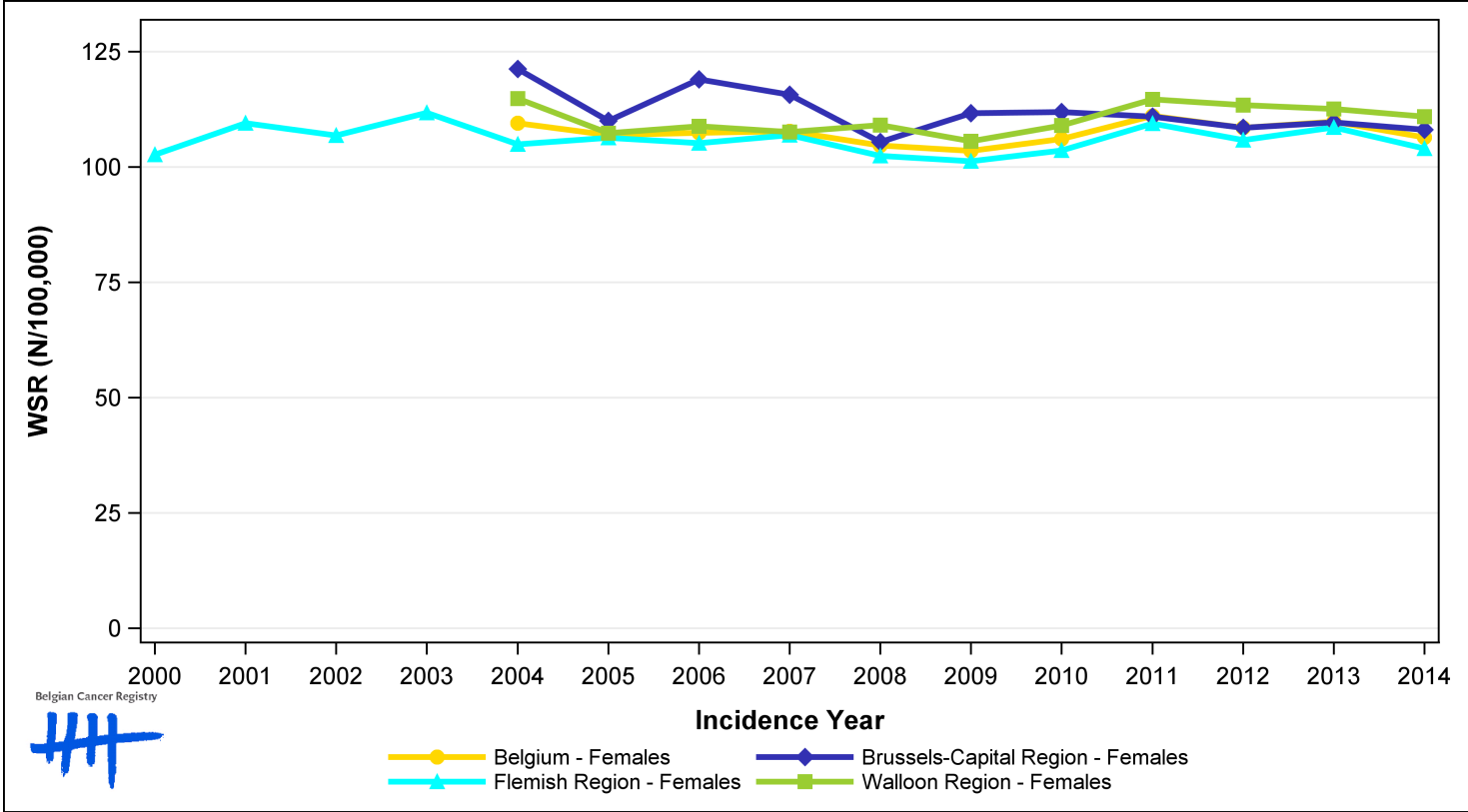


**6-Incidence (WSR N/100,000) by region and incidence year (Female Breast Cancer)**

Females	2000	2001	2002	2003	2004	2005	2006	2007	2008	2009	2010	2011	2012	2013	2014	EAPC	p-value
<b>Belgium</b>					<b>109.5</b>	<b>106.9</b>	<b>107.4</b>	<b>107.8</b>	<b>104.7</b>	<b>103.5</b>	<b>106.1</b>	<b>111.1</b>	<b>108.5</b>	<b>109.9</b>	<b>106.4</b>	<b>0.2</b>	<b>0.758</b>
Walloon Region					114.8	107.3	108.8	107.6	109.1	105.6	109.0	114.7	113.4	112.6	110.9	<i>0.2</i>	0.392
Flemish Region	102.6	109.5	106.8	111.7	104.9	106.4	105.1	106.9	102.4	101.2	103.6	109.4	105.8	108.6	104.0	<i>]-0.1;0[</i>	0.610
Brussels-Capital Region					121.3	110.0	119.0	115.7	105.4	111.7	111.9	110.9	108.5	109.7	108.1	<i>-0.8</i>	0.036

WSR=Age-Standardised Rate, using the World Standard Population (N/100,000 person-years)  
 EAPC = Estimated Annual Percentage Change : increase/decrease of WSR incidence rate as a constant rate over the 2004-2014 period (except for the Flemish region : 2000-2014).  
 EAPC value in italics is provided despite the fact that the linearity assumption is questionable. EAPC value should be interpreted with caution.

**7-Trends in incidence (WSR N/100,000) by region and incidence year (Female Breast Cancer)**



**8-Number of invasive tumours (N) and age-standardised incidence rate (WSR N/100,000) by age group and incidence year, Females (Female Breast Cancer)**

Females	N										WSR									
	2005	2006	2007	2008	2009	2010	2011	2012	2013	2014	2005	2006	2007	2008	2009	2010	2011	2012	2013	2014
All ages	9,373	9,488	9,672	9,572	9,588	9,902	10,530	10,550	10,700	10,466	106.9	107.4	107.8	104.7	103.5	106.1	111.1	108.5	109.9	106.4
0-14 y	0	0	0	0	0	0	0	0	0	0	0.0	0.0	0.0	0.0	0.0	0.0	0.0	0.0	0.0	0.0
15-39 y	464	454	528	441	460	488	524	431	463	500	21.2	21.0	24.5	20.4	21.2	22.6	24.6	20.4	21.8	23.5
40-49 y	1,732	1,724	1,732	1,717	1,633	1,635	1,674	1,652	1,706	1,587	221.1	218.4	218.1	215.3	204.5	204.7	208.9	206.9	214.7	202.4
50-59 y	2,353	2,361	2,289	2,301	2,268	2,377	2,553	2,461	2,483	2,373	345.6	340.0	325.5	323.5	315.9	325.0	343.9	325.7	324.8	305.9
60-69 y	1,996	2,097	2,167	2,146	2,228	2,343	2,504	2,648	2,717	2,637	389.7	407.4	410.4	395.5	402.8	415.5	431.7	440.5	436.7	417.0
70+ y	2,828	2,852	2,956	2,967	2,999	3,059	3,275	3,358	3,331	3,369	353.0	358.8	362.8	362.5	363.1	370.5	394.0	398.5	406.1	419.0

N=Number of invasive tumours  
 WSR=Age-Standardised Rate, using the World Standard Population (N/100,000 person-years)

