

Belgian Cancer Registry



---

Incidence Fact Sheet

---

Malignant Melanoma

---

ICD10 : C43

---

Belgium 2013

---

Publication Date :  
22/09/2015

## 1-Incidence 2013 by sex and region (Malignant Melanoma)

Males	Age	N	CR	ESR	WSR	CRi
<b>Belgium</b>	<b>61.3</b>	<b>1,082</b>	<b>19.9</b>	<b>16.4</b>	<b>12.1</b>	<b>1.30</b>
Walloon Region	60.4	320	18.5	15.8	11.7	1.25
Flemish Region	61.6	669	21.2	16.8	12.3	1.32
Brussels-Capital Region	61.4	93	16.6	16.8	11.9	1.36

Females	Age	N	CR	ESR	WSR	CRi
<b>Belgium</b>	<b>56.4</b>	<b>1,553</b>	<b>27.5</b>	<b>23.5</b>	<b>18.5</b>	<b>1.87</b>
Walloon Region	55.0	463	25.3	22.1	17.8	1.73
Flemish Region	57.0	984	30.5	25.5	20.0	2.04
Brussels-Capital Region	57.8	106	17.9	16.1	12.4	1.34

Age=Average Age at Diagnosis (years)

N=Number of invasive tumours

CR=Crude (all ages) Rate (N/100,000 person-years)

ESR=Age-Standardised Rate, using the European Standard Population (N/100,000 person-years)

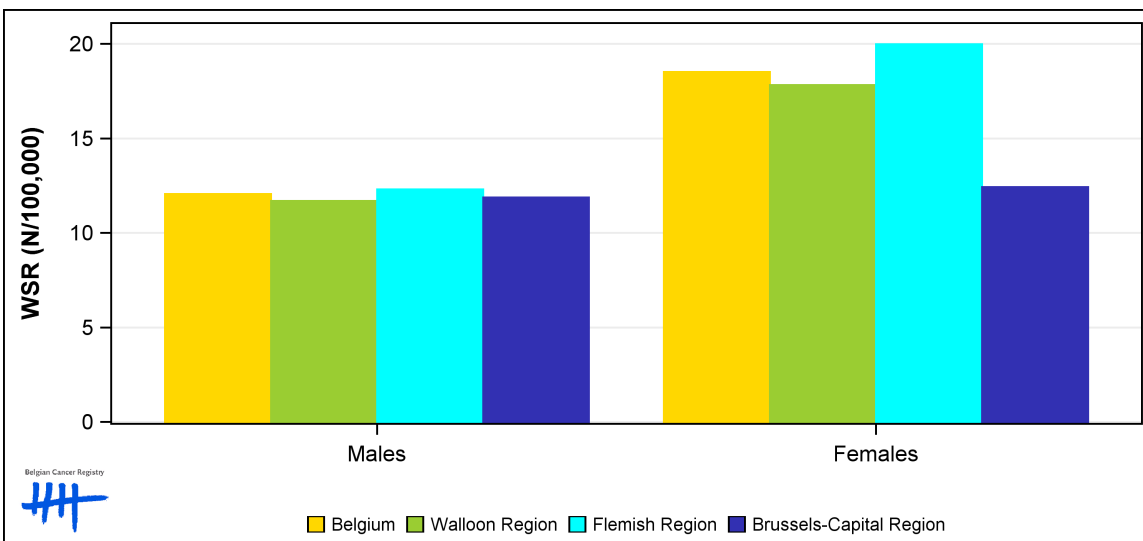
WSR=Age-Standardised Rate, using the World Standard Population (N/100,000 person-years)

CRi=Cumulative Risk for 0-74 years (%)

Belgian Cancer Registry



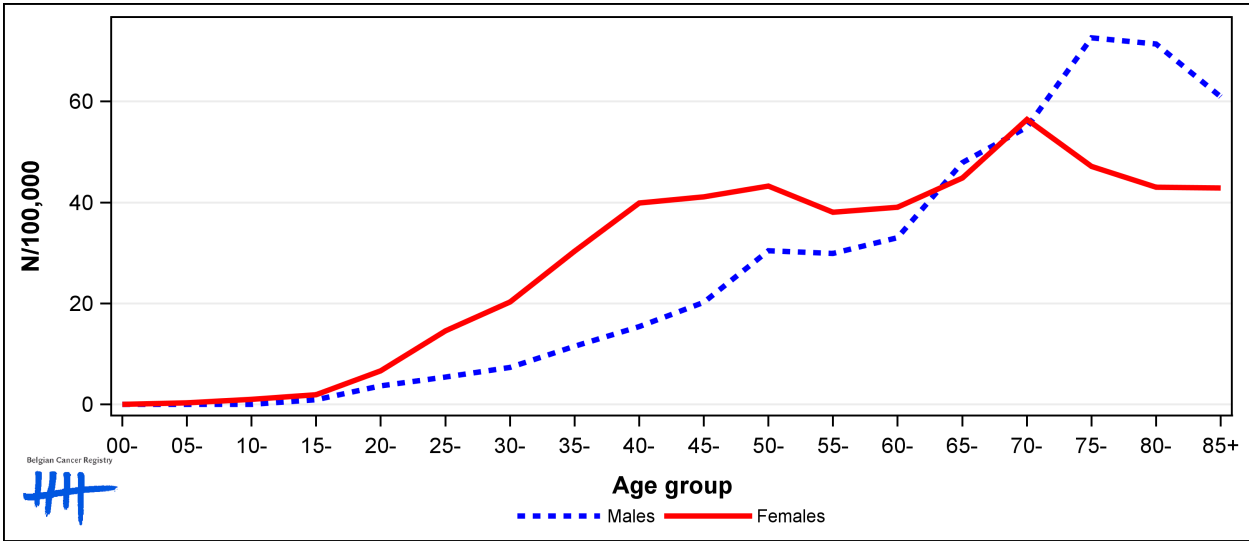
## 2-Incidence 2013 (WSR N/100,000) by sex and region (Malignant Melanoma)



### 3-Age-specific and age-standardised incidence rates by sex, Belgium 2013 (Malignant Melanoma)

	00-	05-	10-	15-	20-	25-	30-	35-	40-	45-	50-	55-	60-	65-	70-	75-	80-	85+	CR	ESR	WSR
Males	0.0	0.0	0.0	0.9	3.7	5.5	7.4	11.6	15.4	20.2	30.4	29.9	33.0	47.9	54.9	72.6	71.4	61.0	19.9	16.4	12.1
Females	0.0	0.3	1.0	1.9	6.6	14.6	20.3	30.3	39.9	41.1	43.2	38.1	39.0	44.8	56.4	47.2	43.0	42.9	27.5	23.5	18.5

CR=Crude (all ages) Rate (N/100,000 person-years)  
 ESR=Age-Standardised Rate, using the European Standard Population (N/100,000 person-years)  
 WSR=Age-Standardised Rate, using the World Standard Population (N/100,000 person-years)

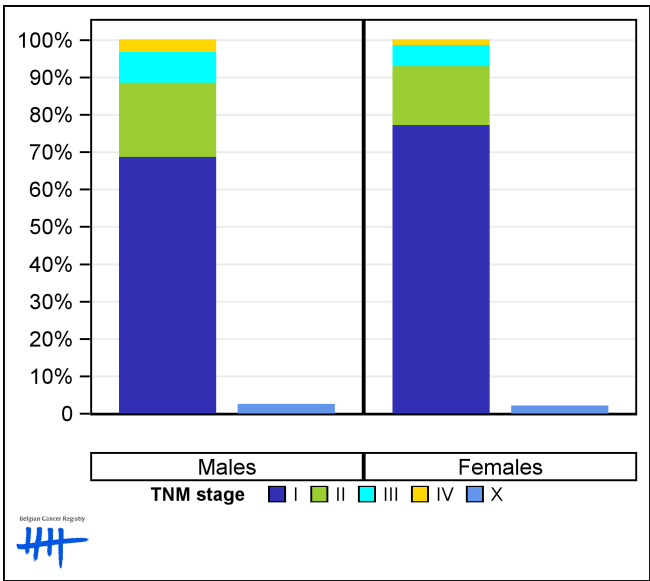


### 4-Combined TNM stage by sex, Belgium 2013 (Malignant Melanoma)

	Stage I	Stage II	Stage III	Stage IV	Stage X	Stage NA	Total
Males (N)	703	203	84	29	25	38	1,082
Males (%)	65.0	18.8	7.8	2.7	2.3	3.5	100
Females (N)	1,158	236	84	16	30	29	1,553
Females (%)	74.6	15.2	5.4	1.0	1.9	1.9	100

Staging according to the TNM 7th edition (Ref:Sobin LH, Gospodarowicz MK, Wittekind Ch. TNM classification of malignant tumours, UICC 7th edition)  
 Combined TNM stage : compilation of pathological (pTNM) and clinical (cTNM) stage. pTNM prevails over cTNM, except when cTNM stage is IV  
 Stage X: diagnoses with an unknown stage  
 Stage NA: diagnoses with a histological diagnosis where no stage can be evaluated (Not Applicable)

### 5-Percentage of combined TNM stage by sex (known stages and stage X are reported separately), Belgium 2013 (Malignant Melanoma)



**6-Incidence (WSR N/100,000) by sex, region and incidence year (Malignant Melanoma)**

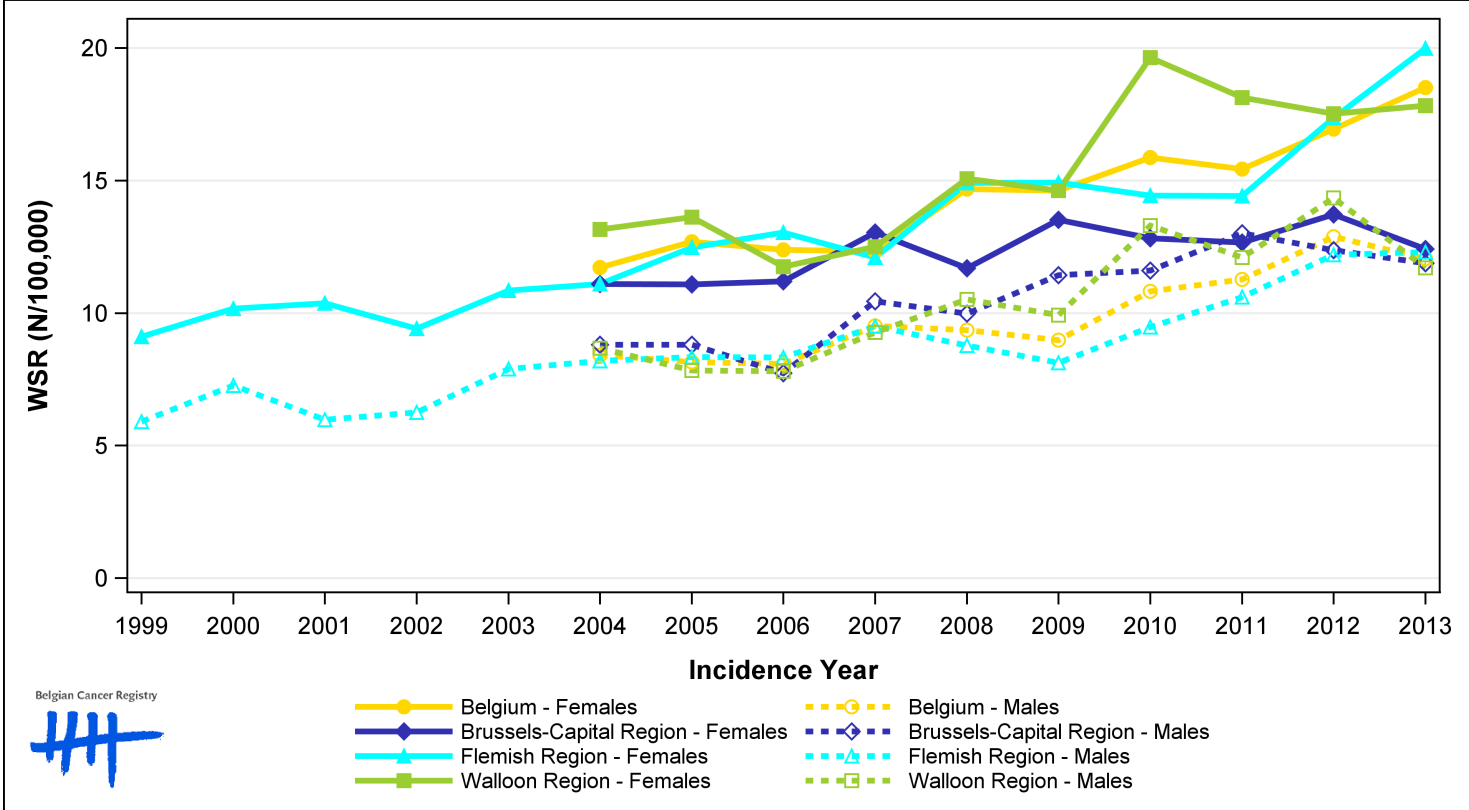
Males		1999	2000	2001	2002	2003	2004	2005	2006	2007	2008	2009	2010	2011	2012	2013	EAPC	p-value
<b>Belgium</b>							8.4	8.2	8.1	9.5	9.4	9.0	10.8	11.3	12.9	12.1	5.2	<0.001
Walloon Region							8.7	7.8	7.8	9.3	10.5	9.9	13.3	12.1	14.3	11.7	6.3	0.001
Flemish Region		5.9	7.3	6.0	6.3	7.9	8.2	8.3	8.3	9.5	8.8	8.1	9.5	10.6	12.2	12.3	4.8	<0.001
Brussels-Capital Region							8.8	8.8	7.7	10.4	10.0	11.4	11.6	13.0	12.4	11.9	5.0	0.001

Females		1999	2000	2001	2002	2003	2004	2005	2006	2007	2008	2009	2010	2011	2012	2013	EAPC	p-value
<b>Belgium</b>							11.7	12.7	12.4	12.3	14.7	14.6	15.9	15.4	16.9	18.5	5.0	<0.001
Walloon Region							13.2	13.6	11.8	12.5	15.1	14.6	19.6	18.1	17.5	17.8	5.0	0.003
Flemish Region		9.1	10.2	10.4	9.4	10.9	11.1	12.5	13.0	12.1	14.9	14.9	14.4	14.4	17.4	20.0	5.0	<0.001
Brussels-Capital Region							11.1	11.1	11.2	13.0	11.7	13.5	12.8	12.7	13.7	12.4	2.0	0.018

WSR=Age-Standardised Rate, using the World Standard Population (N/100,000 person-years)  
 EAPC = Estimated Annual Percentage Change : increase/decrease of WSR incidence rate as a constant rate over the 2004-2013 period (except for the Flemish region : 1999-2013).

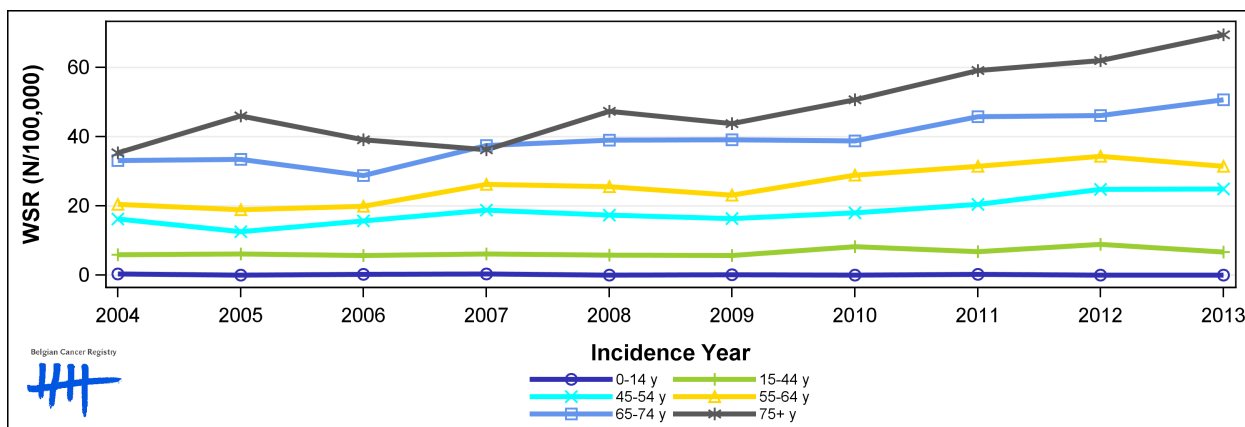
**7-Trends in incidence (WSR N/100,000) by sex, region and incidence year (Malignant Melanoma)**



### 8-Number of invasive tumours (N) and age-standardised incidence rate (WSR N/100,000) by age group and incidence year, Males (Malignant Melanoma)

Males	N										WSR									
	2004	2005	2006	2007	2008	2009	2010	2011	2012	2013	2004	2005	2006	2007	2008	2009	2010	2011	2012	2013
<b>All ages</b>	<b>631</b>	<b>642</b>	<b>628</b>	<b>741</b>	<b>764</b>	<b>737</b>	<b>884</b>	<b>952</b>	<b>1,094</b>	<b>1,082</b>	<b>8.4</b>	<b>8.2</b>	<b>8.1</b>	<b>9.5</b>	<b>9.4</b>	<b>9.0</b>	<b>10.8</b>	<b>11.3</b>	<b>12.9</b>	<b>12.1</b>
0-14 years	3	1	3	3	1	2	1	3	1	0	0.3	<0.1	0.3	0.3	<0.1	0.2	<0.1	0.3	<0.1	0.0
15-44 years	148	155	142	155	149	138	200	168	226	165	5.9	6.2	5.7	6.2	5.8	5.7	8.2	6.8	8.9	6.7
45-54 years	119	93	118	143	135	129	144	166	203	206	16.3	12.6	15.7	18.8	17.3	16.3	18.0	20.5	24.8	24.9
55-64 years	113	106	114	161	158	148	189	209	229	214	20.5	18.9	19.9	26.2	25.5	23.2	28.9	31.4	34.3	31.5
65-74 years	146	146	127	160	165	170	171	198	209	235	33.1	33.4	28.8	37.4	39.0	39.1	38.8	45.8	46.1	50.7
75+ years	102	141	124	119	156	150	179	208	226	262	35.3	46.0	39.1	36.2	47.3	43.7	50.6	59.0	62.0	69.4

N=Number of invasive tumours  
WSR=Age-Standardised Rate, using the World Standard Population (N/100,000 person-years)



### 9-Number of invasive tumours (N) and age-standardised incidence rate (WSR N/100,000) by age group and incidence year, Females (Malignant Melanoma)

Females	N										WSR									
	2004	2005	2006	2007	2008	2009	2010	2011	2012	2013	2004	2005	2006	2007	2008	2009	2010	2011	2012	2013
<b>All ages</b>	<b>889</b>	<b>979</b>	<b>976</b>	<b>989</b>	<b>1,163</b>	<b>1,196</b>	<b>1,251</b>	<b>1,267</b>	<b>1,417</b>	<b>1,553</b>	<b>11.7</b>	<b>12.7</b>	<b>12.4</b>	<b>12.3</b>	<b>14.7</b>	<b>14.6</b>	<b>15.9</b>	<b>15.4</b>	<b>16.9</b>	<b>18.5</b>
0-14 years	2	2	3	1	2	1	5	3	2	4	0.2	0.2	0.3	<0.1	0.2	0.1	0.5	0.3	0.2	0.4
15-44 years	312	297	312	296	374	347	401	396	391	416	13.3	12.5	13.0	12.2	15.5	14.5	17.1	16.5	16.2	17.0
45-54 years	139	185	172	198	212	224	222	239	294	338	19.1	25.2	23.0	26.0	27.8	28.8	28.3	30.0	36.8	42.1
55-64 years	134	168	149	174	202	225	227	194	247	268	23.2	29.2	25.5	28.3	31.8	34.6	34.1	28.5	35.8	38.5
65-74 years	148	158	146	121	158	154	171	181	215	258	28.4	30.0	27.9	24.3	31.5	31.2	34.6	36.7	42.6	49.5
75+ years	154	169	194	199	215	245	225	254	268	269	28.8	31.6	36.4	35.4	37.7	42.1	38.1	41.3	44.5	45.1

N=Number of invasive tumours  
WSR=Age-Standardised Rate, using the World Standard Population (N/100,000 person-years)

