

Belgian Cancer Registry



Cancer Fact Sheet **Bladder Cancer**

ICD10 : C67

Belgium 2022

1. Cancer Incidence

1.1. Number of new diagnoses and incidence rates

Table 1: Bladder Cancer: Average age at diagnosis, number of new cancer diagnoses (N), crude rate (CR), age-standardised incidence rates (ESR and WSR) and cumulative risk by sex and region, 2022

Males	Age (years)	N	CR	ESR	WSR	CRi
Belgium	74.2	2,066	36.2	40.0	14.3	1.64
Brussels-Capital Region	73.6	145	24.2	41.2	14.6	1.85
Flemish Region	75.0	1,197	36.1	36.5	12.9	1.45
Walloon Region	73.0	724	40.4	46.9	17.2	1.95

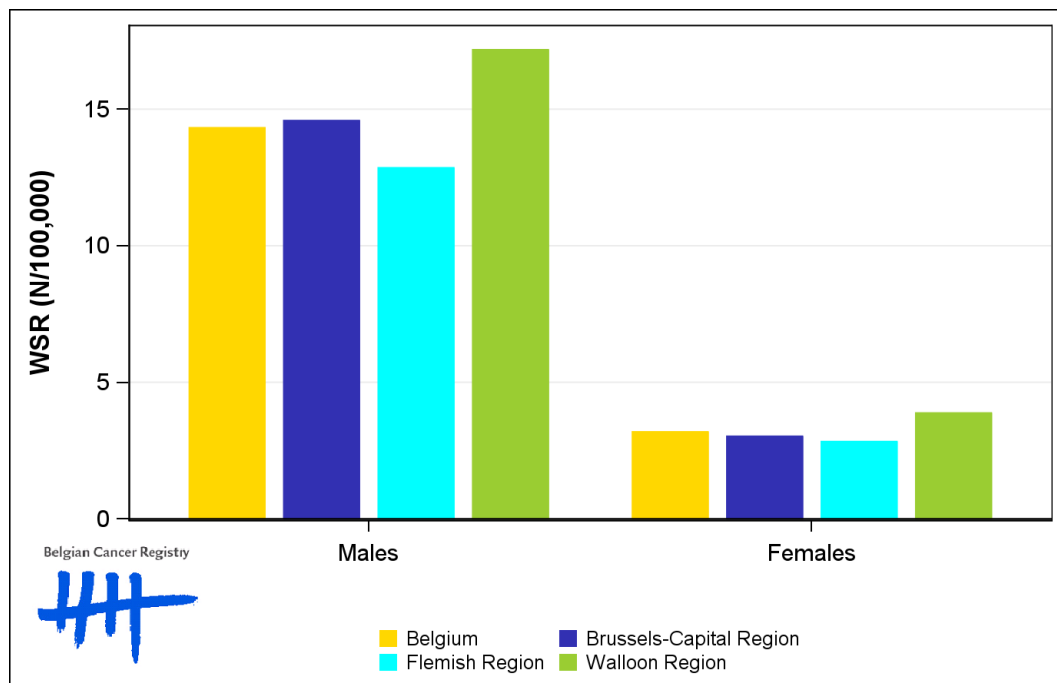
Females	Age (years)	N	CR	ESR	WSR	CRi
Belgium	75.8	570	9.7	8.6	3.2	0.35
Brussels-Capital Region	76.3	44	7.1	8.3	3.0	0.31
Flemish Region	76.9	322	9.5	7.8	2.8	0.30
Walloon Region	74.0	204	10.9	10.0	3.9	0.44

CR=Crude (all ages) Rate (N/100,000 person-years)
 ESR=Age-Standardised Rate, using 2013 revised European Standard Population (N/100,000 person-years)
 WSR=Age-Standardised Rate, using the World Standard Population (N/100,000 person-years)
 CRi=Cumulative Risk for 0-74 years (%)

Belgian Cancer Registry



Figure 1: Bladder Cancer: Age-standardised incidence rates by sex and region, 2022



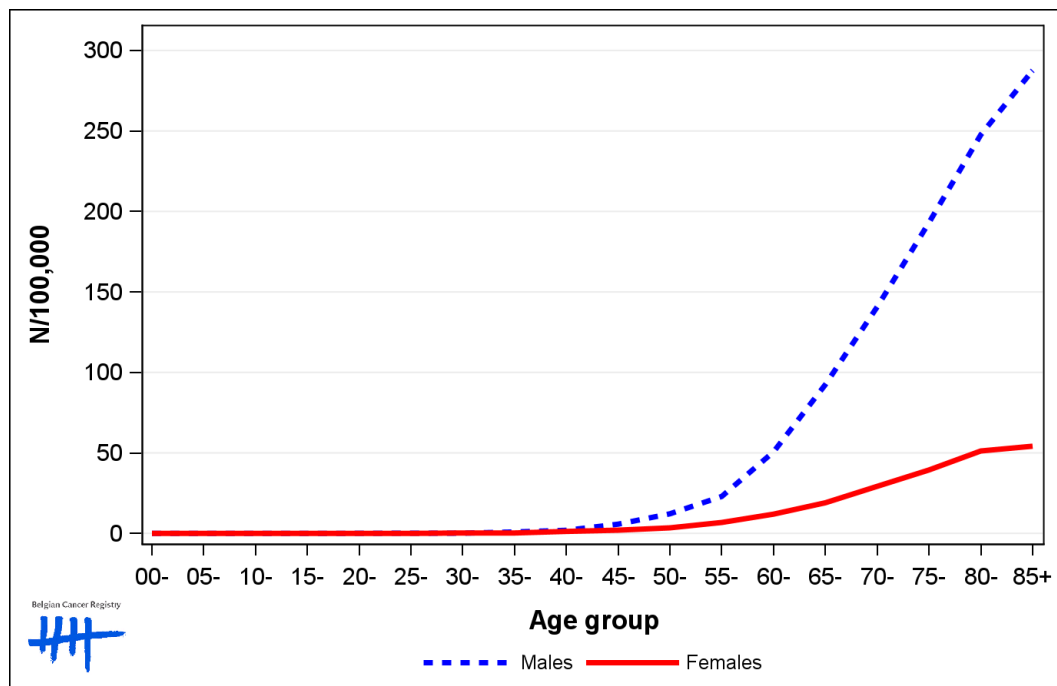
1.2. Age-specific incidence rates

Table 2: Bladder Cancer: Age-specific incidence rates, crude rate (CR) and age-standardised incidence rates (ESR and WSR) by sex, Belgium 2022

	00-	05-	10-	15-	20-	25-	30-	35-	40-	45-	50-	55-	60-	65-	70-	75-	80-	85+	CR	ESR	WSR
Males	0.0	0.0	0.0	0.0	0.0	0.0	0.0	0.8	1.3	3.2	11.9	25.7	48.8	89.3	149.6	201.8	254.3	293.0	36.2	40.0	14.3
Females	0.0	0.0	0.0	0.0	0.0	0.0	0.0	0.3	0.8	2.2	4.9	6.8	9.3	17.7	27.4	45.4	47.7	65.5	9.7	8.6	3.2

CR=Crude (all ages) Rate (N/100,000 person-years)
 ESR (2013)=Age-Standardised Rate, using the 2013 revised European Standard Population (N/100,000 person-years)
 WSR=Age-Standardised Rate, using the World Standard Population (N/100,000 person-years)

Figure 2: Bladder Cancer: Age-specific incidence rates by sex, 2018-2022



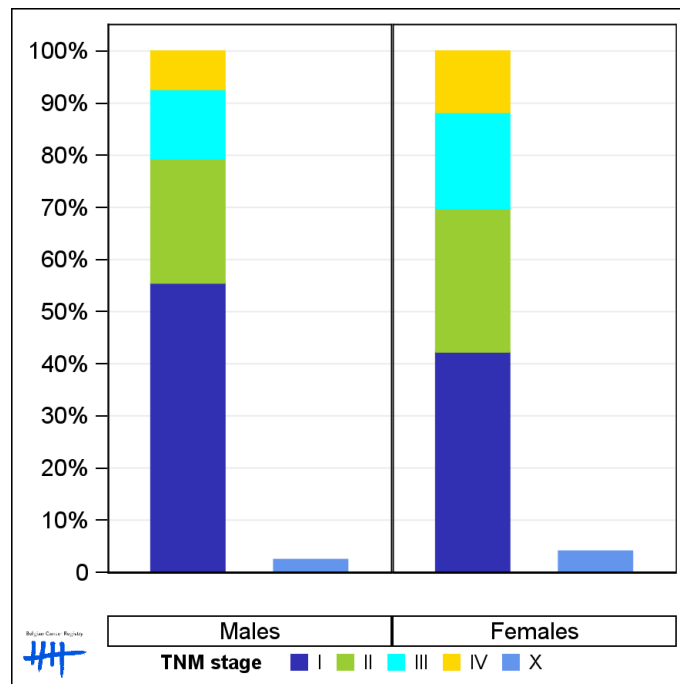
1.3. Combined stage

Table 3: Bladder Cancer: Distribution of combined stage by sex, Belgium 2022

	Stage I	Stage II	Stage III	Stage IV	Stage X	Stage NA	Total
Males							
N	1,117	480	268	147	50	4	2,066
%	54.1	23.2	13.0	7.1	2.4	0.2	100
Females							
N	231	150	101	64	23	1	570
%	40.5	26.3	17.7	11.2	4.0	0.2	100

Staging according to the TNM 8th edition (Ref: Brierley JD, Gospodarowicz MK, Wittekind Ch. TNM classification of malignant tumours, UICC 8th edition)
 Combined TNM stage : compilation of pathological (pTNM) and clinical (cTNM) stage. pTNM prevails over cTNM, except when cTNM stage is IV
 Stage X: diagnoses with an unknown stage
 Stage NA: diagnoses with a histological diagnosis where no stage can be evaluated (Not Applicable)

Figure 3: Bladder Cancer: Bar chart of known combined stage by sex, Belgium 2022



1.4. Trends in incidence

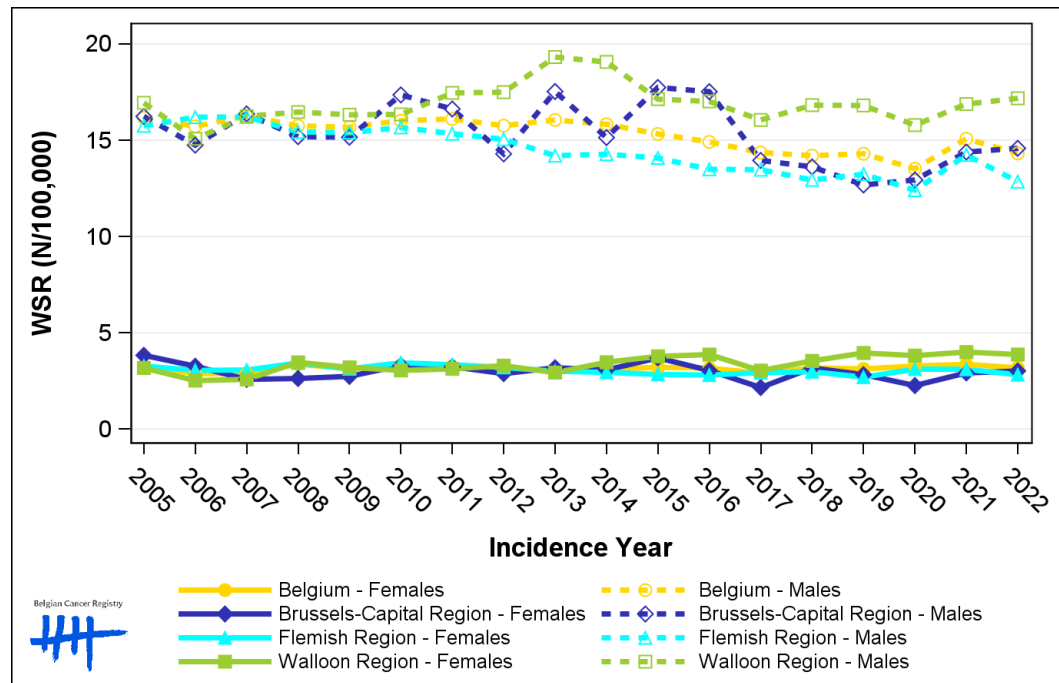
Table 4: Bladder Cancer: Age-standardised incidence rates (WSR) and average annual percentage change (AAPC) by incidence year, sex and region

Males	2008	2009	2010	2011	2012	2013	2014	2015	2016	2017	2018	2019	2020	2021	2022	AAPC	95% CI
Belgium	15.8	15.7	16.0	16.1	15.8	16.1	15.8	15.3	14.9	14.4	14.2	14.3	13.5	15.1	14.3	-0.6	[-1.0; -0.2]
Brussels-Capital Region	15.2	15.2	17.4	16.6	14.3	17.5	15.1	17.7	17.5	14.0	13.6	12.7	12.9	14.4	14.6	-1.3	[-2.5; -0.0]
Flemish Region	15.4	15.4	15.7	15.3	15.1	14.2	14.3	14.1	13.5	13.5	12.9	13.2	12.4	14.2	12.9	-1.5	[-1.9; -1.0]
Walloon Region	16.5	16.3	16.3	17.5	17.5	19.3	19.1	17.1	17.0	16.1	16.8	16.8	15.8	16.9	17.2	0.4	[-0.1; 0.9]

Females	2008	2009	2010	2011	2012	2013	2014	2015	2016	2017	2018	2019	2020	2021	2022	AAPC	95% CI
Belgium	3.4	3.1	3.3	3.3	3.2	3.0	3.1	3.2	3.2	2.9	3.2	3.1	3.3	3.4	3.2	0.0	[-0.4; 0.5]
Brussels-Capital Region	2.6	2.7	3.3	3.2	2.9	3.2	3.1	3.7	3.0	2.2	3.2	2.8	2.3	2.9	3.0	-0.6	[-2.4; 1.3]
Flemish Region	3.4	3.1	3.4	3.3	3.2	3.0	2.9	2.8	2.8	2.9	3.0	2.7	3.1	3.1	2.8	-1.0	[-1.6; -0.4]
Walloon Region	3.5	3.2	3.0	3.1	3.3	2.9	3.5	3.8	3.9	3.0	3.5	4.0	3.8	4.0	3.9	1.6	[0.6; 2.7]

WSR=Age-Standardised Rate, using the World Standard Population (N/100,000 person-years)
 AAPC = Average Annual Percentage Change over the 2008-2022 period

Figure 4: Bladder Cancer: Age-standardised incidence rates (WSR) by incidence year, sex and region



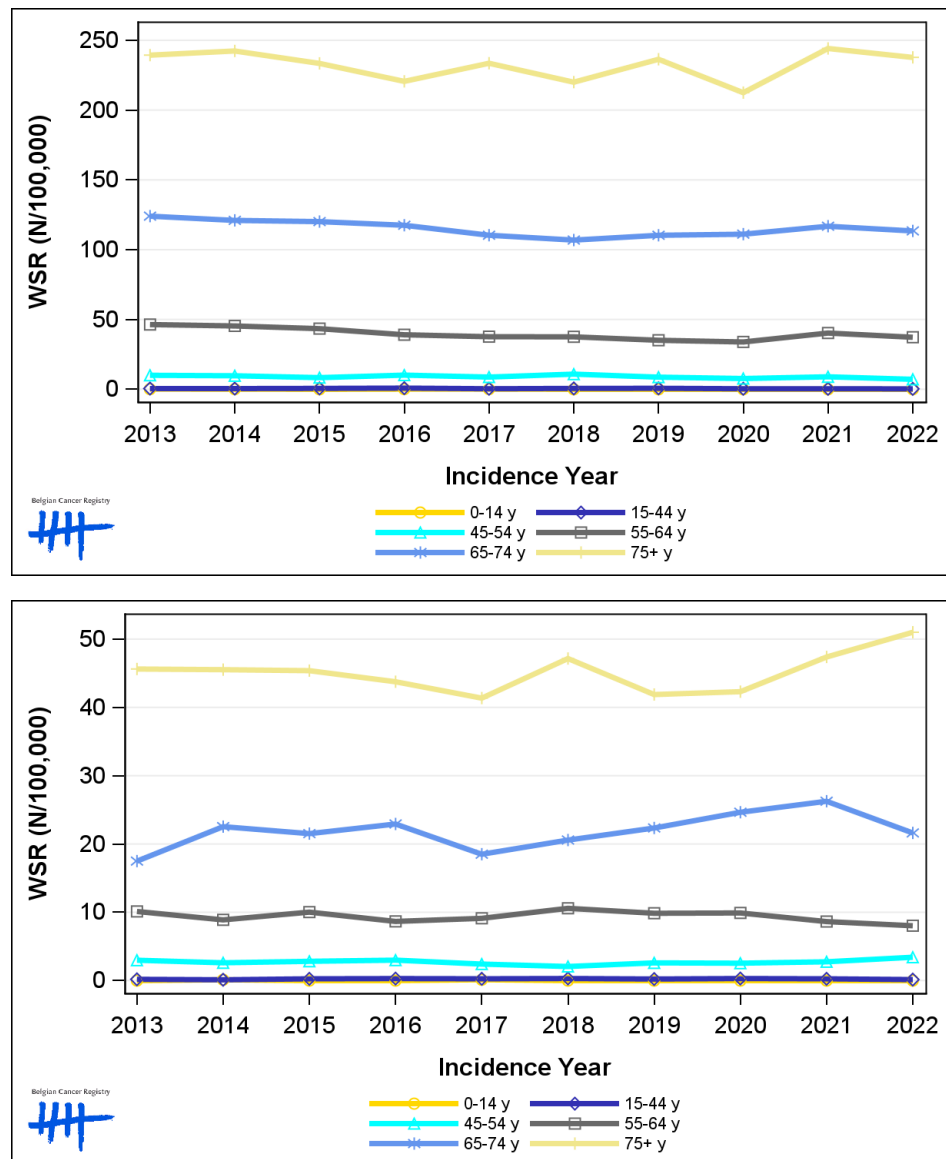
1.5. Incidence by broad age groups

Table 5: Bladder Cancer: Number of new diagnoses and age-standardised incidence rates (WSR) by broad age groups and incidence year by sex, Belgium

	N										WSR									
	2013	2014	2015	2016	2017	2018	2019	2020	2021	2022	2013	2014	2015	2016	2017	2018	2019	2020	2021	2022
Males																				
All ages	1,888	1,911	1,887	1,862	1,866	1,856	1,949	1,854	2,105	2,066	16.1	15.8	15.3	14.9	14.4	14.2	14.3	13.5	15.1	14.3
0-14 y	1	1	0	1	1	0	0	0	0	0	0.1	<0.1	0.0	0.1	0.1	0.0	0.0	0.0	0.0	0.0
15-44 y	14	13	17	22	10	16	17	10	9	8	0.5	0.5	0.6	0.8	0.4	0.6	0.7	0.4	0.3	0.3
45-54 y	83	82	71	86	73	92	72	63	70	59	10.0	9.7	8.3	10.1	8.7	10.8	8.7	7.7	8.9	7.1
55-64 y	310	306	297	273	267	268	255	251	303	284	46.4	45.4	43.4	39.0	37.7	37.6	35.1	33.9	40.3	37.3
65-74 y	576	576	587	592	581	585	622	632	685	674	124.0	121.0	120.1	117.5	110.4	106.9	110.3	111.1	116.8	113.4
75+ y	904	933	915	888	934	895	983	898	1,038	1,041	239.4	242.4	233.5	220.6	233.6	220.0	236.4	212.5	244.2	237.8
Females																				
All ages	481	507	511	508	468	526	515	530	572	570	3.0	3.1	3.2	3.2	2.9	3.2	3.1	3.3	3.4	3.2
0-14 y	0	1	0	0	1	0	0	0	0	0	0.0	0.1	0.0	0.0	0.1	0.0	0.0	0.0	0.0	0.0
15-44 y	5	3	7	7	7	8	6	8	7	4	0.2	0.1	0.3	0.3	0.3	0.3	0.2	0.3	0.3	0.1
45-54 y	25	22	23	25	20	17	20	20	22	27	3.0	2.6	2.8	3.0	2.4	2.1	2.6	2.5	2.8	3.4
55-64 y	69	62	70	62	67	78	73	75	66	62	10.1	8.9	10.0	8.7	9.1	10.6	9.9	9.9	8.6	8.0
65-74 y	90	121	116	127	107	124	137	154	171	140	17.5	22.5	21.5	22.9	18.5	20.6	22.3	24.6	26.3	21.6
75+ y	292	298	295	287	266	299	279	273	306	337	45.6	45.5	45.4	43.8	41.4	47.2	41.9	42.3	47.4	51.0

N=Number of invasive tumours
WSR=Age-Standardised Rate, using the World Standard Population (N/100,000 person-years)

Figure 5: Bladder Cancer: Age-standardised incidence rates (WSR) versus incidence year by broad age groups for males (top) and females (bottom), Belgium



2. Net survival

Table 6: Bladder Cancer: 5-year net survival by sex, age group and region, Belgium 2018-2022

	5-year net survival 2018-2022 (%)					
	Males			Females		
	N at risk	estimate	95% CI	N at risk	estimate	95% CI
Overall	9,802	60.6	[58.7, 62.5]	2,704	52.2	[49.4, 55.2]
Age group						
15-59 years	870	76.8	[73.4, 80.4]	273	61.3	[55.3, 68.0]
60-74 years	4,089	67.4	[65.2, 69.6]	938	62.1	[58.2, 66.3]
75+ years	4,844	51.8	[48.7, 55.2]	1,493	44.5	[40.1, 49.4]
Region						
Brussels-Capital Region	658	55.3	[48.0, 63.8]	193	46.0	[35.9, 59.0]
Flemish Region	5,792	62.1	[59.7, 64.5]	1,542	54.2	[50.5, 58.3]
Walloon Region	3,352	58.9	[55.7, 62.4]	969	50.2	[45.6, 55.3]

Figure 6: Bladder Cancer: net survival by sex, Belgium 2018-2022

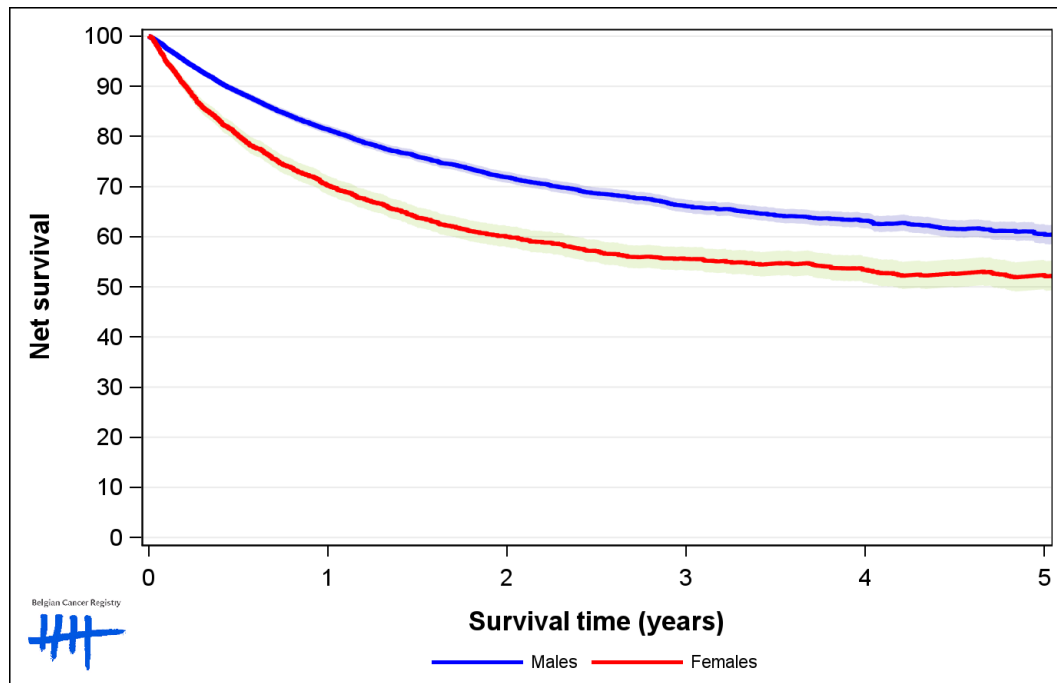


Figure 7: Bladder Cancer: net survival by age group in males, Belgium 2018-2022

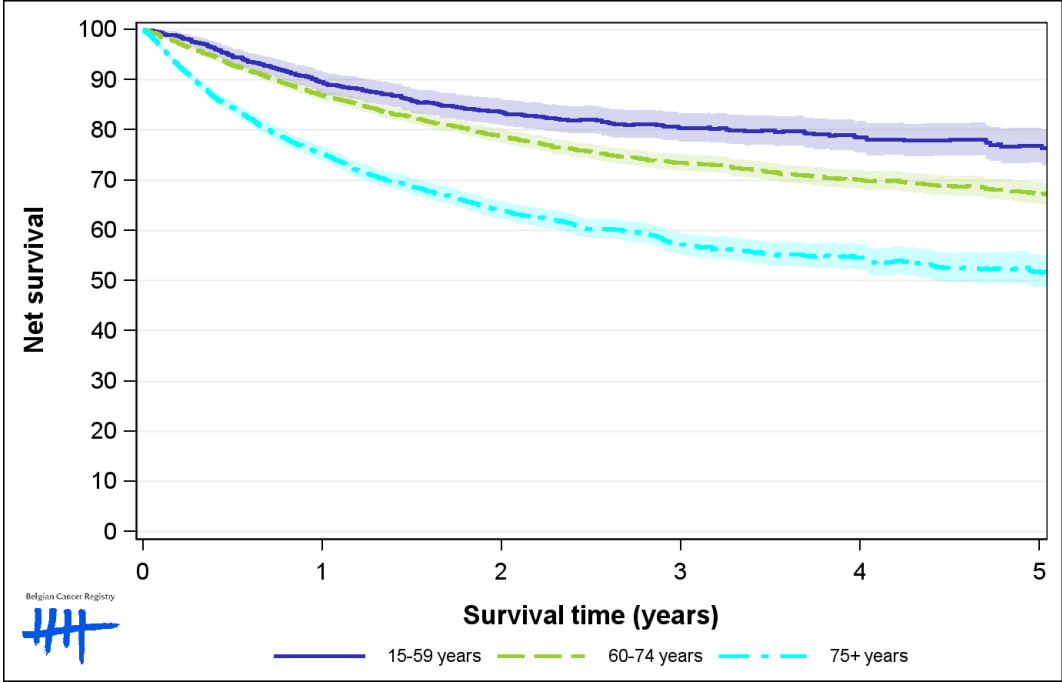


Figure 8: Bladder Cancer: net survival by age group in females, Belgium 2018-2022

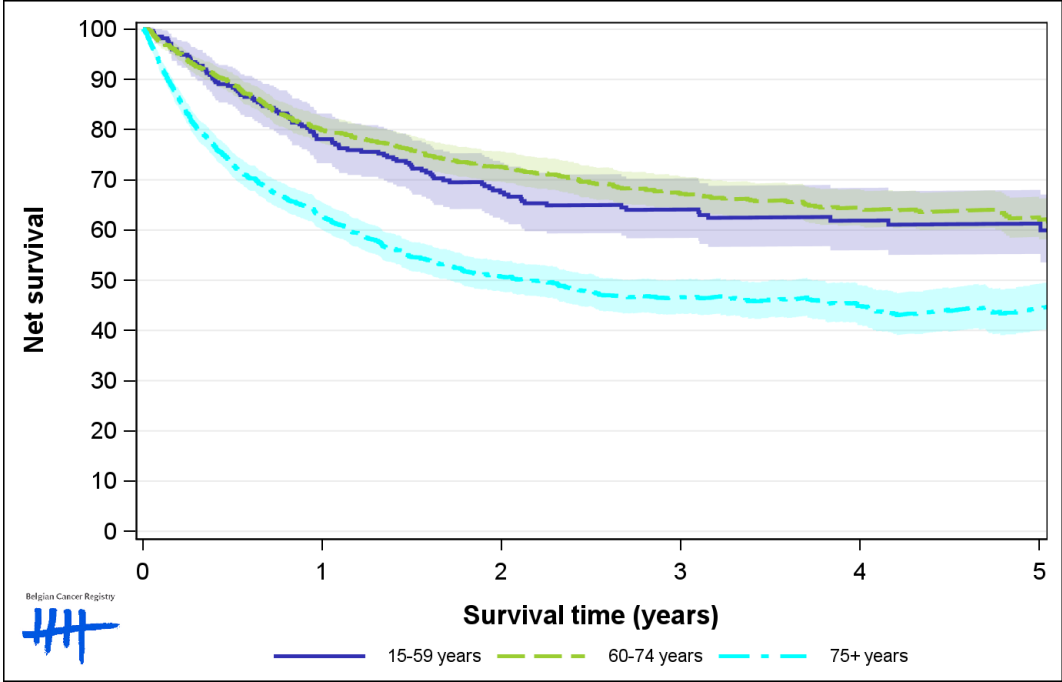


Figure 9: Bladder Cancer: net survival by region in males, Belgium 2018-2022

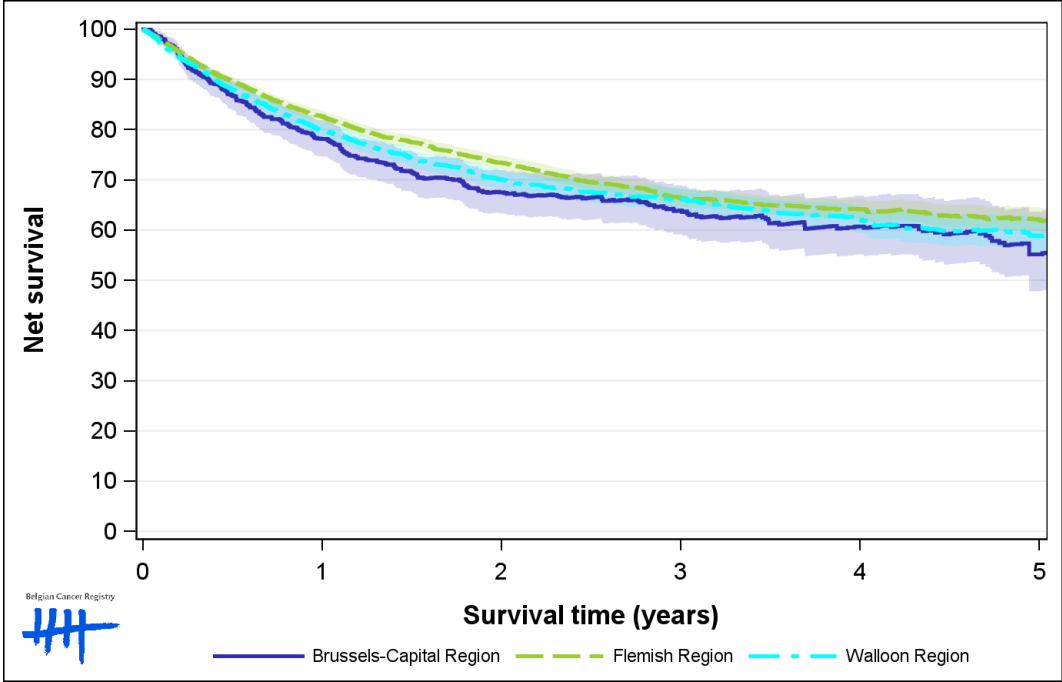


Figure 10: Bladder Cancer: net survival by region in females, Belgium 2018-2022

