

Belgian Cancer Registry



Cancer Fact Sheet **Cervical Cancer**

ICD10 : C53

Belgium 2022

1. Cancer Incidence

1.1. Number of new diagnoses and incidence rates

Table 1: Cervical Cancer: Average age at diagnosis, number of new cancer diagnoses (N), crude rate (CR), age-standardised incidence rates (ESR and WSR) and cumulative risk by region, 2022

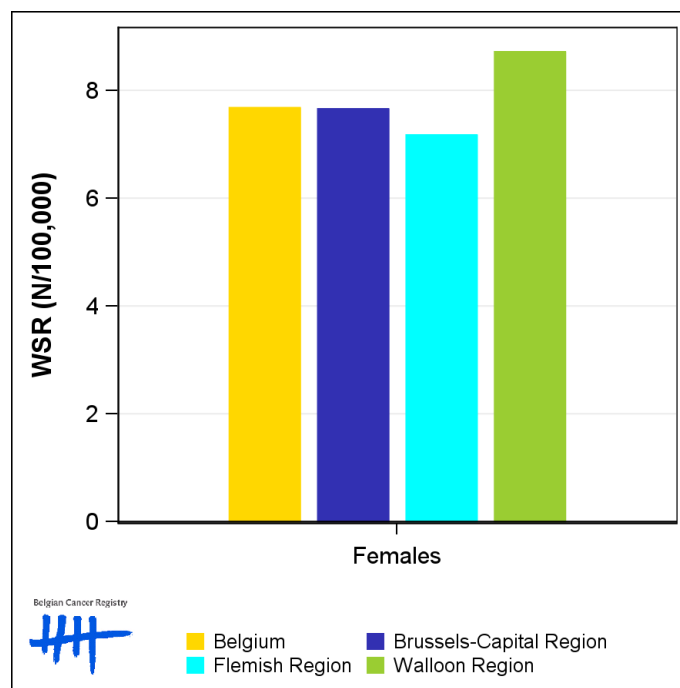
Females	Age (years)	N	CR	ESR	WSR	CRi
Belgium	54.5	641	10.9	11.0	7.7	0.76
Brussels-Capital Region	53.1	63	10.1	11.4	7.7	0.79
Flemish Region	55.1	349	10.3	10.3	7.2	0.71
Walloon Region	53.9	229	12.2	12.4	8.7	0.87

CR=Crude (all ages) Rate (N/100,000 person-years)
ESR=Age-Standardised Rate, using 2013 revised European Standard Population (N/100,000 person-years)
WSR=Age-Standardised Rate, using the World Standard Population (N/100,000 person-years)
CRi=Cumulative Risk for 0-74 years (%)

Belgian Cancer Registry



Figure 1: Cervical Cancer: Age-standardised incidence rates by region, 2022



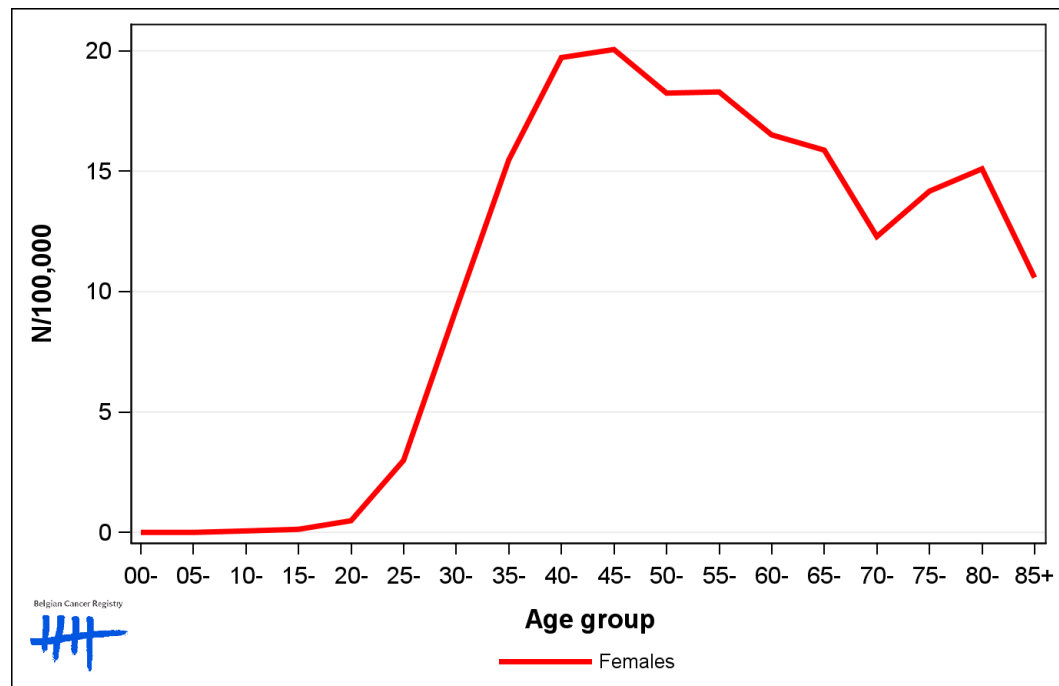
1.2. Age-specific incidence rates

Table 2: Cervical Cancer: Age-specific incidence rates, crude rate (CR) and age-standardised incidence rates (ESR and WSR), Belgium 2022

	00-	05-	10-	15-	20-	25-	30-	35-	40-	45-	50-	55-	60-	65-	70-	75-	80-	85+	CR	ESR	WSR
Females	0.0	0.0	0.3	0.3	0.6	1.9	9.4	16.3	23.0	19.3	17.3	19.6	18.6	15.6	11.2	15.1	10.1	9.8	10.9	11.0	7.7

CR=Crude (all ages) Rate (N/100,000 person-years)
 ESR (2013)=Age-Standardised Rate, using the 2013 revised European Standard Population (N/100,000 person-years)
 WSR=Age-Standardised Rate, using the World Standard Population (N/100,000 person-years)

Figure 2: Cervical Cancer: Age-specific incidence rates, 2018-2022



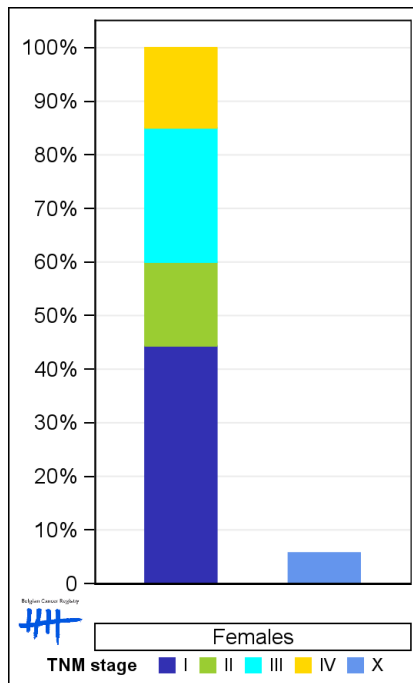
1.3. Combined stage

Table 3: Cervical Cancer: Distribution of combined stage, Belgium 2022

	Stage I	Stage II	Stage III	Stage IV	Stage X	Stage NA	Total
Females							
N	264	93	149	89	36	10	641
%	41.2	14.5	23.2	13.9	5.6	1.6	100

Staging according to the TNM 8th edition (Ref: Brierley JD, Gospodarowicz MK, Wittekind Ch. TNM classification of malignant tumours, UICC 8th edition)
 Combined TNM stage : compilation of pathological (pTNM) and clinical (cTNM) stage. pTNM prevails over cTNM, except when cTNM stage is IV
 Stage X: diagnoses with an unknown stage
 Stage NA: diagnoses with a histological diagnosis where no stage can be evaluated (Not Applicable)

Figure 3: Cervical Cancer: Bar chart of known combined stage, Belgium 2022



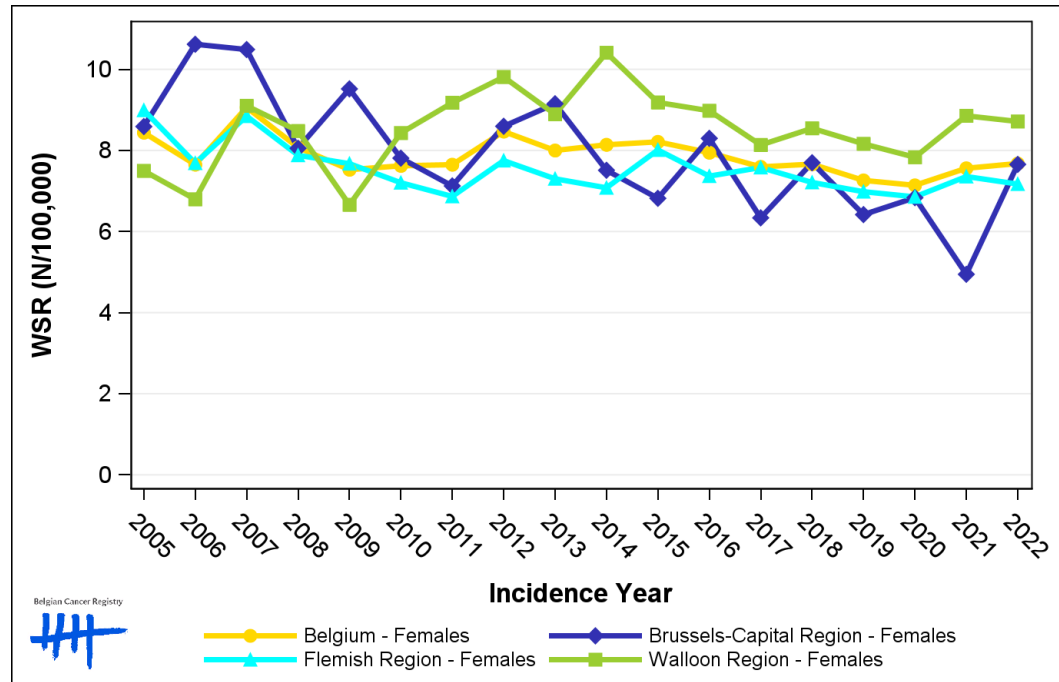
1.4. Trends in incidence

Table 4: Cervical Cancer: Age-standardised incidence rates (WSR) and average annual percentage change (AAPC) by incidence year and region

Females	2008	2009	2010	2011	2012	2013	2014	2015	2016	2017	2018	2019	2020	2021	2022	AAPC	95% CI
Belgium	8.1	7.5	7.6	7.6	8.5	8.0	8.1	8.2	7.9	7.6	7.7	7.3	7.1	7.6	7.7	-0.5	[-1.0; 0.0]
Brussels-Capital Region	8.1	9.5	7.8	7.1	8.6	9.2	7.5	6.8	8.3	6.3	7.7	6.4	6.8	4.9	7.7	-2.2	[-3.9; -0.5]
Flemish Region	7.9	7.7	7.2	6.9	7.8	7.3	7.1	8.0	7.4	7.6	7.2	7.0	6.9	7.4	7.2	-0.4	[-1.0; 0.2]
Walloon Region	8.5	6.7	8.4	9.2	9.8	8.9	10.4	9.2	9.0	8.1	8.5	8.2	7.8	8.9	8.7	0.3	[-0.9; 1.5]

WSR=Age-Standardised Rate, using the World Standard Population (N/100,000 person-years)
 AAPC = Average Annual Percentage Change over the 2008-2022 period

Figure 4: Cervical Cancer: Age-standardised incidence rates (WSR) by incidence year and region



1.5. Incidence by broad age groups

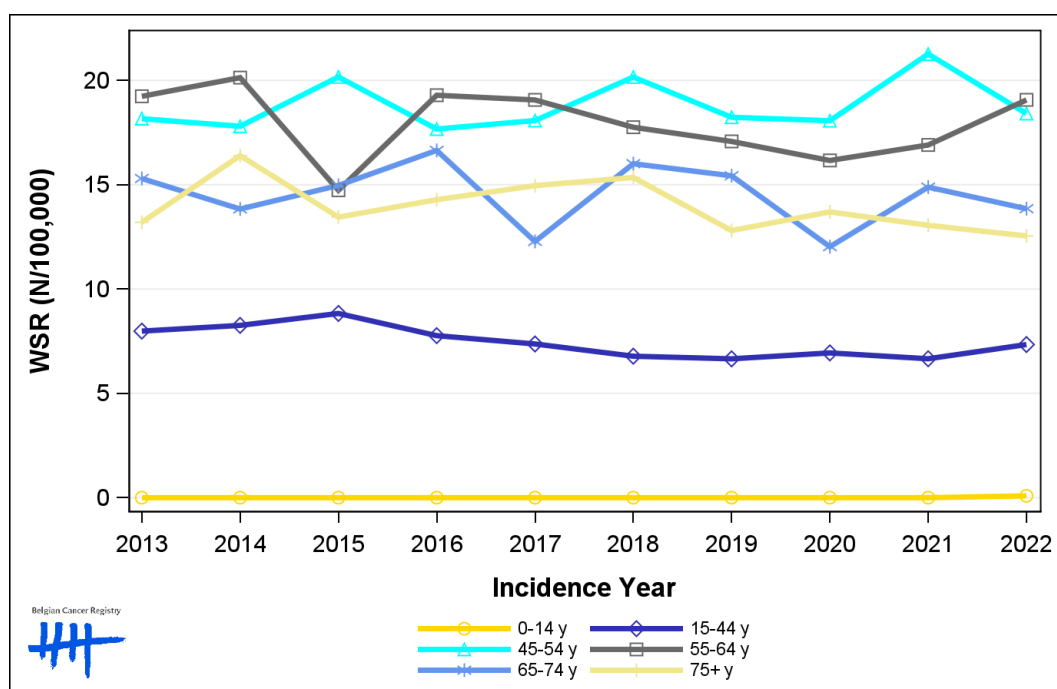
Table 5: Cervical Cancer: Number of new diagnoses and age-standardised incidence rates (WSR) by broad age groups and incidence year, Belgium

	N											WSR										
	2013	2014	2015	2016	2017	2018	2019	2020	2021	2022	2013	2014	2015	2016	2017	2018	2019	2020	2021	2022		
Females																						
All ages	635	665	648	646	633	642	611	599	640	641	8.0	8.1	8.2	7.9	7.6	7.7	7.3	7.1	7.6	7.7		
0-14 y	0	0	0	0	0	0	0	0	0	1	0.0	0.0	0.0	0.0	0.0	0.0	0.0	0.0	0.0	<0.1		
15-44 y	203	208	223	195	187	172	170	179	175	194	8.0	8.3	8.8	7.8	7.4	6.8	6.7	6.9	6.7	7.3		
45-54 y	145	141	156	138	145	157	143	139	160	138	18.2	17.8	20.2	17.7	18.1	20.2	18.2	18.1	21.3	18.4		
55-64 y	133	141	105	140	141	133	129	124	131	148	19.2	20.1	14.7	19.3	19.1	17.8	17.1	16.2	16.9	19.1		
65-74 y	79	73	81	92	70	90	93	74	90	85	15.3	13.8	15.0	16.6	12.3	16.0	15.4	12.0	14.9	13.9		
75+ y	75	102	83	81	90	90	76	83	84	75	13.2	16.4	13.5	14.3	15.0	15.3	12.8	13.7	13.1	12.5		

N=Number of invasive tumours

WSR=Age-Standardised Rate, using the World Standard Population (N/100,000 person-years)

Figure 5: Cervical Cancer: Age-standardised incidence rates (WSR) versus incidence year by broad age groups, Belgium



2. Net survival

Table 6: Cervical Cancer: 5-year net survival by age group and region, Belgium 2018-2022

	5-year net survival 2018-2022 (%)		
	Females		
	N at risk	estimate	95% CI
Overall	3,099	70.0	[67.7, 72.3]
Age group			
15-44 years	878	85.3	[82.5, 88.2]
45-64 years	1,389	72.2	[69.3, 75.2]
65+ years	832	50.5	[45.0, 56.6]
Region			
Brussels-Capital Region	269	75.8	[69.5, 82.7]
Flemish Region	1,713	69.7	[66.5, 73.0]
Walloon Region	1,118	69.1	[65.6, 72.8]

Figure 6: Cervical Cancer: net survival, Belgium 2018-2022

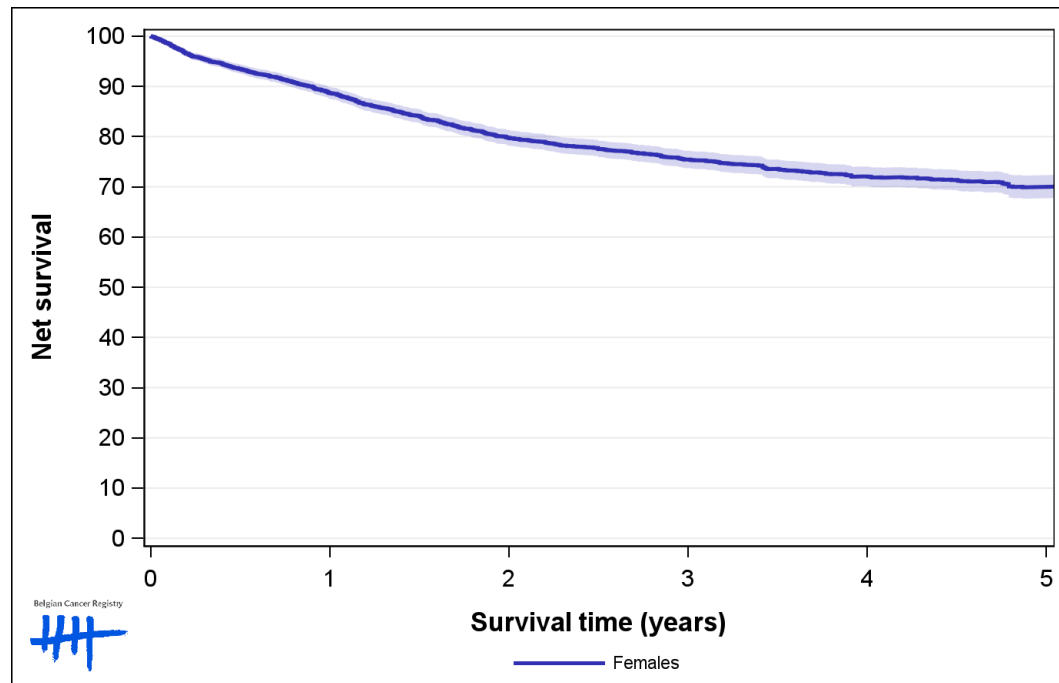


Figure 7: Cervical Cancer: net survival by age group, Belgium 2018-2022

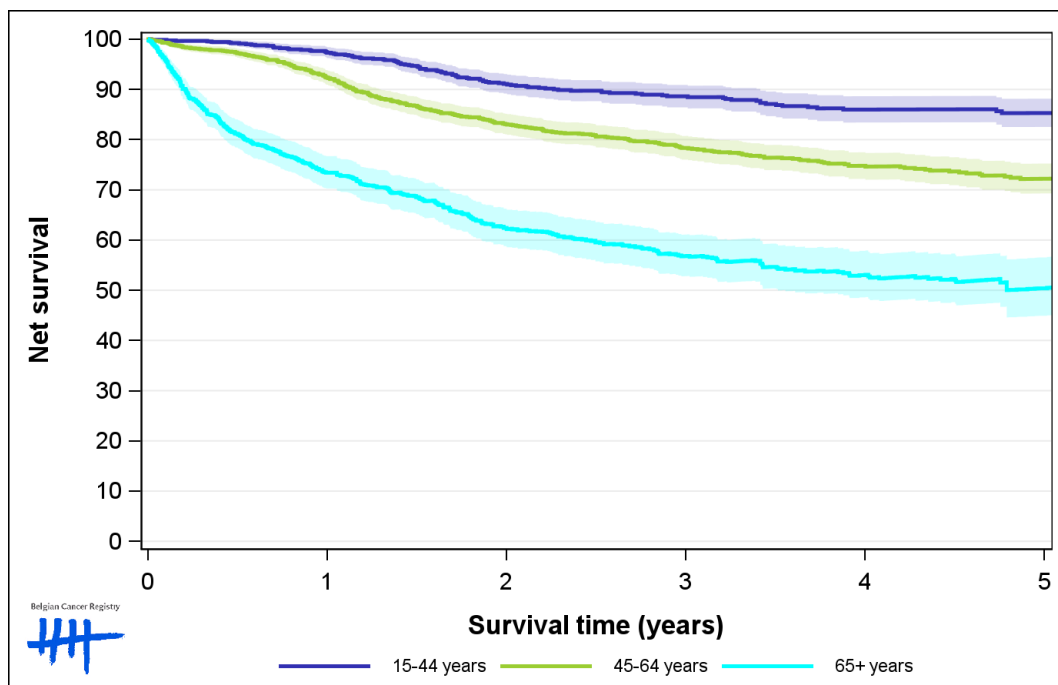


Figure 8: Cervical Cancer: net survival by region, Belgium 2018-2022

