

Belgian Cancer Registry



Cancer Fact Sheet **Corpus Uteri Cancer**

ICD10 : C54

Belgium 2022

1. Cancer Incidence

1.1. Number of new diagnoses and incidence rates

Table 1: Corpus Uteri Cancer: Average age at diagnosis, number of new cancer diagnoses (N), crude rate (CR), age-standardised incidence rates (ESR and WSR) and cumulative risk by region, 2022

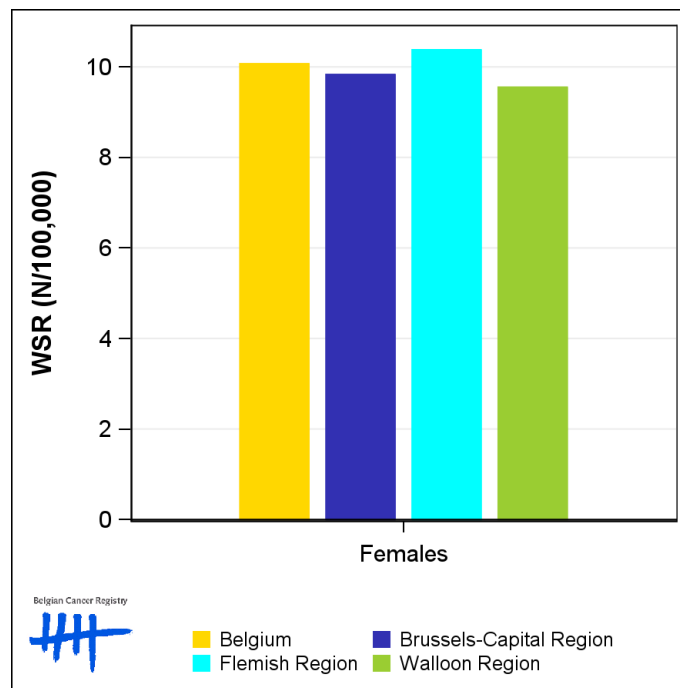
Females	Age (years)	N	CR	ESR	WSR	CRi
Belgium	70.1	1,385	23.6	22.2	10.1	1.26
Brussels-Capital Region	67.6	103	16.6	21.2	9.8	1.22
Flemish Region	70.4	858	25.4	22.9	10.4	1.30
Walloon Region	70.2	424	22.7	21.1	9.6	1.21

CR=Crude (all ages) Rate (N/100,000 person-years)
 ESR=Age-Standardised Rate, using 2013 revised European Standard Population (N/100,000 person-years)
 WSR=Age-Standardised Rate, using the World Standard Population (N/100,000 person-years)
 CRi=Cumulative Risk for 0-74 years (%)

Belgian Cancer Registry



Figure 1: Corpus Uteri Cancer: Age-standardised incidence rates by region, 2022



1.2. Age-specific incidence rates

Table 2: Corpus Uteri Cancer: Age-specific incidence rates, crude rate (CR) and age-standardised incidence rates (ESR and WSR), Belgium 2022

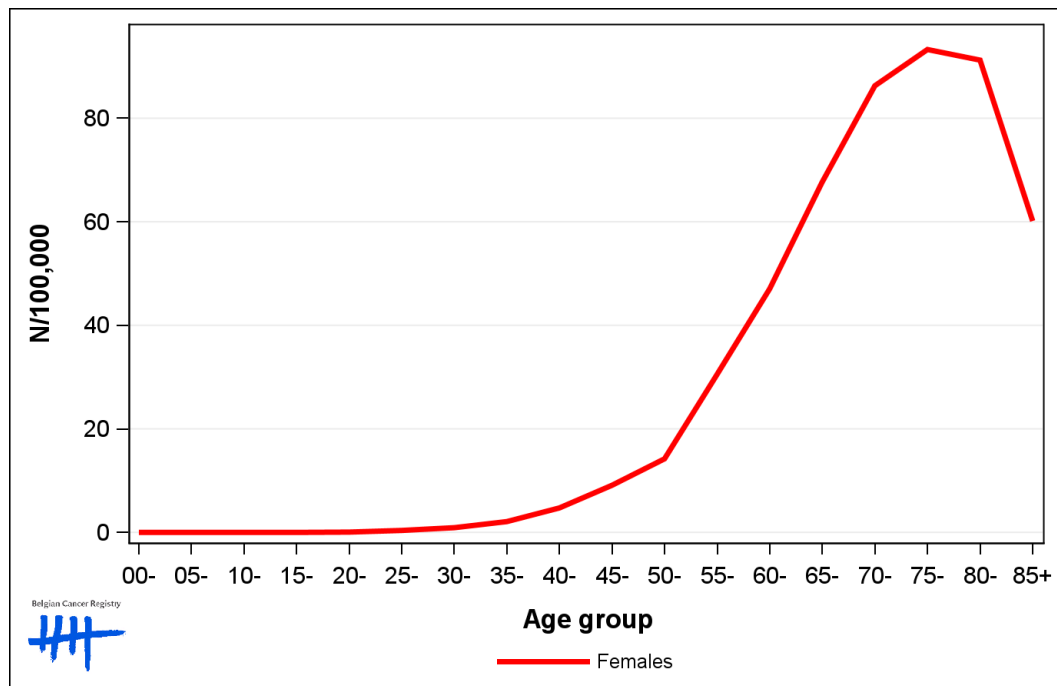
	00-	05-	10-	15-	20-	25-	30-	35-	40-	45-	50-	55-	60-	65-	70-	75-	80-	85+	CR	ESR	WSR
Females	0.0	0.0	0.0	0.0	0.0	0.3	1.3	1.3	6.6	9.5	15.5	27.8	39.6	67.9	84.0	99.1	90.3	57.9	23.6	22.2	10.1

CR=Crude (all ages) Rate (N/100,000 person-years)

ESR (2013)=Age-Standardised Rate, using the 2013 revised European Standard Population (N/100,000 person-years)

WSR=Age-Standardised Rate, using the World Standard Population (N/100,000 person-years)

Figure 2: Corpus Uteri Cancer: Age-specific incidence rates, 2018-2022



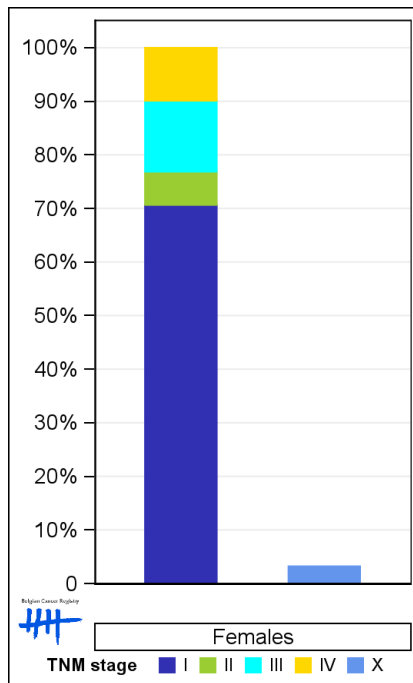
1.3. Combined stage

Table 3: Corpus Uteri Cancer: Distribution of combined stage, Belgium 2022

	Stage I	Stage II	Stage III	Stage IV	Stage X	Stage NA	Total
Females							
N	935	82	175	131	44	18	1,385
%	67.5	5.9	12.6	9.5	3.2	1.3	100

Staging according to the TNM 8th edition (Ref: Brierley JD, Gospodarowicz MK, Wittekind Ch. TNM classification of malignant tumours, UICC 8th edition)
 Combined TNM stage : compilation of pathological (pTNM) and clinical (cTNM) stage. pTNM prevails over cTNM, except when cTNM stage is IV
 Stage X: diagnoses with an unknown stage
 Stage NA: diagnoses with a histological diagnosis where no stage can be evaluated (Not Applicable)

Figure 3: Corpus Uteri Cancer: Bar chart of known combined stage, Belgium 2022



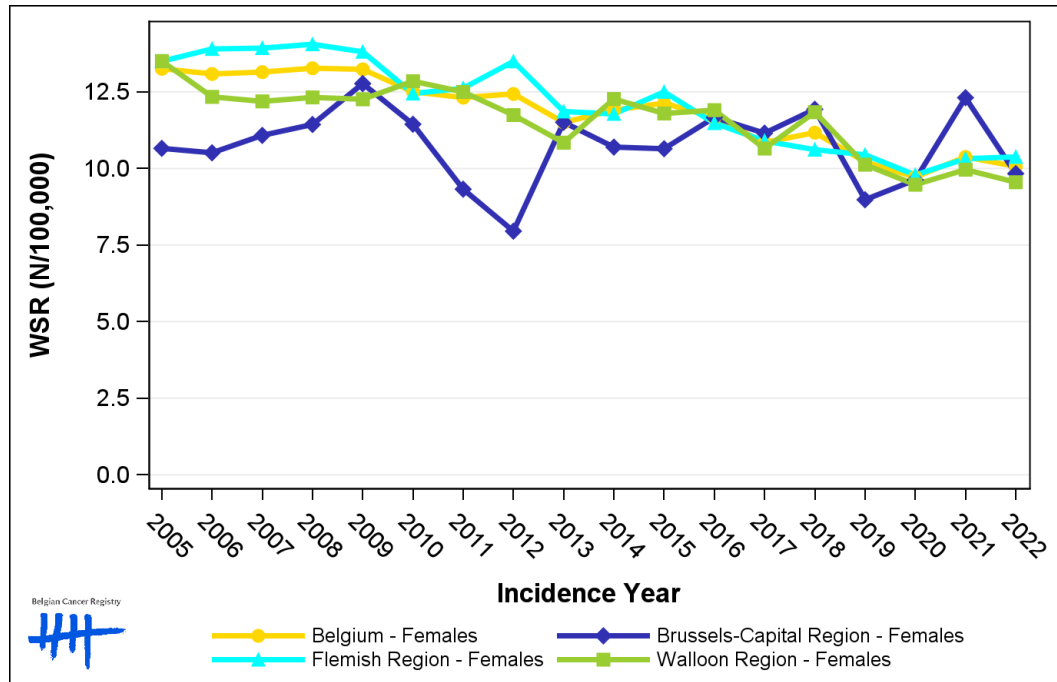
1.4. Trends in incidence

Table 4: Corpus Uteri Cancer: Age-standardised incidence rates (WSR) and average annual percentage change (AAPC) by incidence year and region

Females	2008	2009	2010	2011	2012	2013	2014	2015	2016	2017	2018	2019	2020	2021	2022	AAPC	95% CI
Belgium	13.3	13.2	12.5	12.3	12.4	11.5	11.9	12.1	11.7	10.8	11.2	10.2	9.7	10.4	10.1	-2.1	[-2.5; -1.7]
Brussels-Capital Region	11.4	12.8	11.4	9.3	8.0	11.5	10.7	10.6	11.7	11.2	11.9	9.0	9.6	12.3	9.8	-0.4	[-2.1; 1.4]
Flemish Region	14.1	13.8	12.4	12.6	13.5	11.9	11.8	12.5	11.5	10.9	10.6	10.4	9.8	10.3	10.4	-2.4	[-2.9; -1.9]
Walloon Region	12.3	12.3	12.8	12.5	11.7	10.8	12.3	11.8	11.9	10.7	11.8	10.1	9.5	10.0	9.6	-2.0	[-2.6; -1.3]

WSR=Age-Standardised Rate, using the World Standard Population (N/100,000 person-years)
 AAPC = Average Annual Percentage Change over the 2008-2022 period

Figure 4: Corpus Uteri Cancer: Age-standardised incidence rates (WSR) by incidence year and region



1.5. Incidence by broad age groups

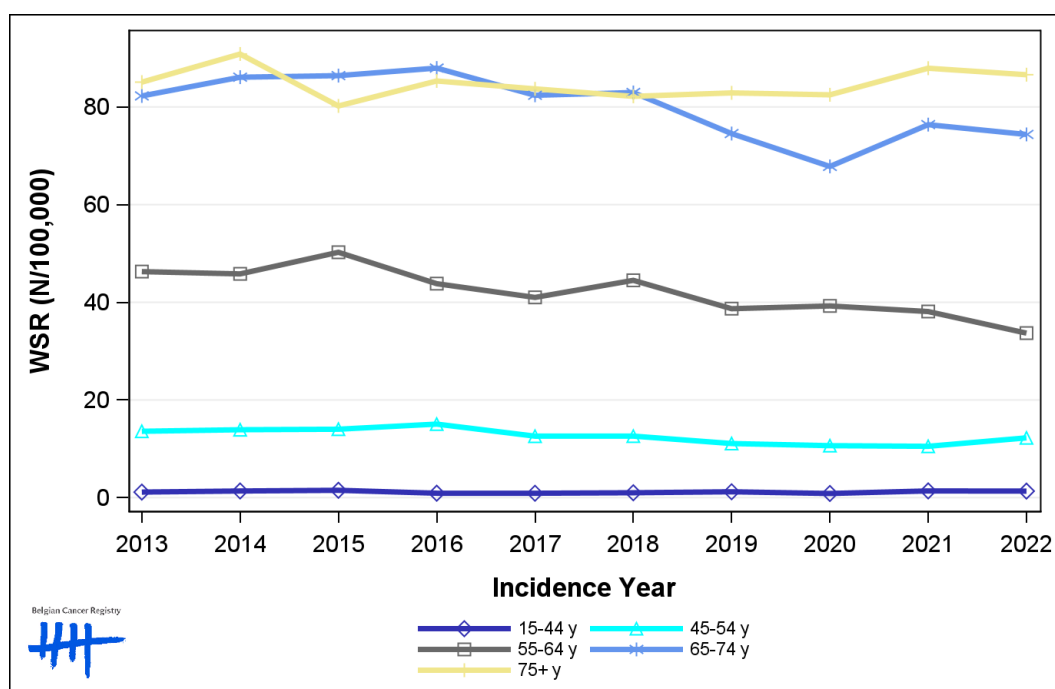
Table 5: Corpus Uteri Cancer: Number of new diagnoses and age-standardised incidence rates (WSR) by broad age groups and incidence year, Belgium

	N										WSR									
	2013	2014	2015	2016	2017	2018	2019	2020	2021	2022	2013	2014	2015	2016	2017	2018	2019	2020	2021	2022
Females																				
All ages	1,391	1,464	1,458	1,445	1,400	1,441	1,347	1,308	1,421	1,385	11.5	11.9	12.1	11.7	10.8	11.2	10.2	9.7	10.4	10.1
0-14 y	0	0	0	0	0	0	0	0	0	0	0.0	0.0	0.0	0.0	0.0	0.0	0.0	0.0	0.0	0.0
15-44 y	28	35	40	24	23	26	31	22	36	36	1.1	1.4	1.5	0.9	0.9	1.0	1.2	0.9	1.4	1.3
45-54 y	113	116	117	123	105	101	89	83	83	95	13.6	13.9	14.0	15.1	12.6	12.6	11.1	10.6	10.5	12.2
55-64 y	318	317	355	313	299	328	290	297	292	260	46.3	45.8	50.2	43.8	41.0	44.5	38.7	39.3	38.1	33.7
65-74 y	426	455	465	488	476	497	454	423	480	474	82.3	86.1	86.4	88.0	82.4	83.0	74.6	67.8	76.4	74.4
75+ y	506	541	481	497	497	489	483	483	530	520	85.1	90.8	80.2	85.3	83.7	82.2	82.9	82.5	87.9	86.6

N=Number of invasive tumours

WSR=Age-Standardised Rate, using the World Standard Population (N/100,000 person-years)

Figure 5: Corpus Uteri Cancer: Age-standardised incidence rates (WSR) versus incidence year by broad age groups, Belgium



Belgian Cancer Registry

Legend:
 15-44 y (Blue line with diamond markers)
 45-54 y (Cyan line with triangle markers)
 55-64 y (Grey line with square markers)
 65-74 y (Blue line with asterisk markers)
 75+ y (Yellow line with plus markers)

2. Net survival

Table 6: Corpus Uteri Cancer: 5-year net survival by age group and region, Belgium 2018-2022

	5-year net survival 2018-2022 (%)		
	Females		
	N at risk	estimate	95% CI
Overall	6,879	80.5	[78.9, 82.2]
Age group			
15-54 years	598	87.9	[84.7, 91.2]
55-69 years	2,555	84.9	[83.1, 86.8]
70+ years	3,726	76.3	[73.6, 79.2]
Region			
Brussels-Capital Region	545	85.6	[80.1, 91.6]
Flemish Region	4,165	79.7	[77.6, 81.9]
Walloon Region	2,169	80.7	[77.7, 83.9]

Figure 6: Corpus Uteri Cancer: net survival, Belgium 2018-2022

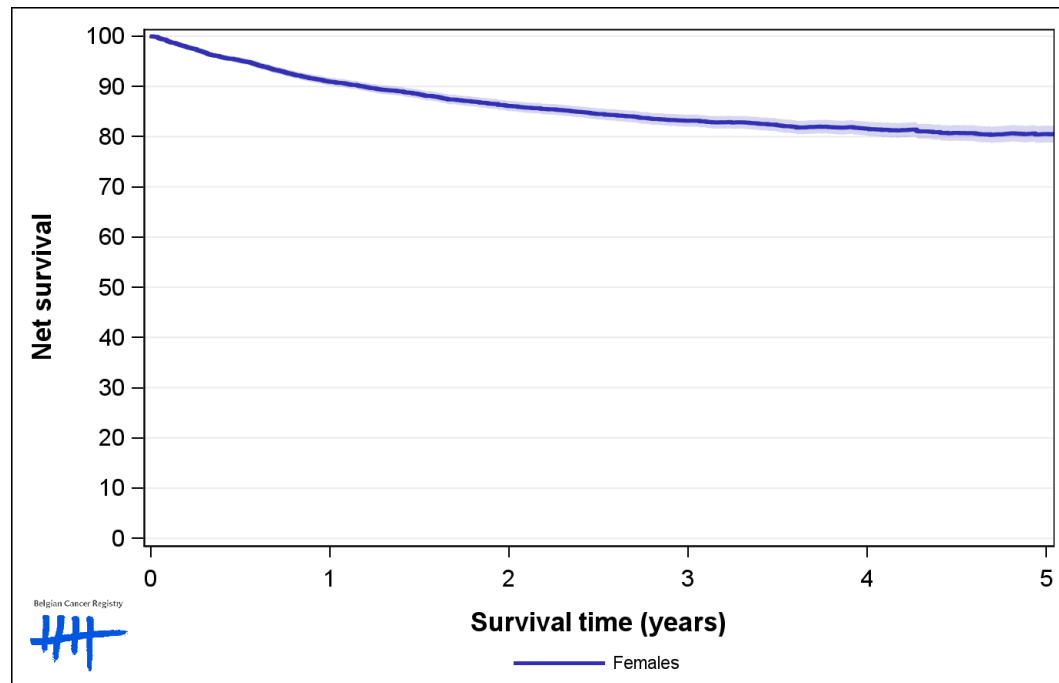


Figure 7: Corpus Uteri Cancer: net survival by age group, Belgium 2018-2022

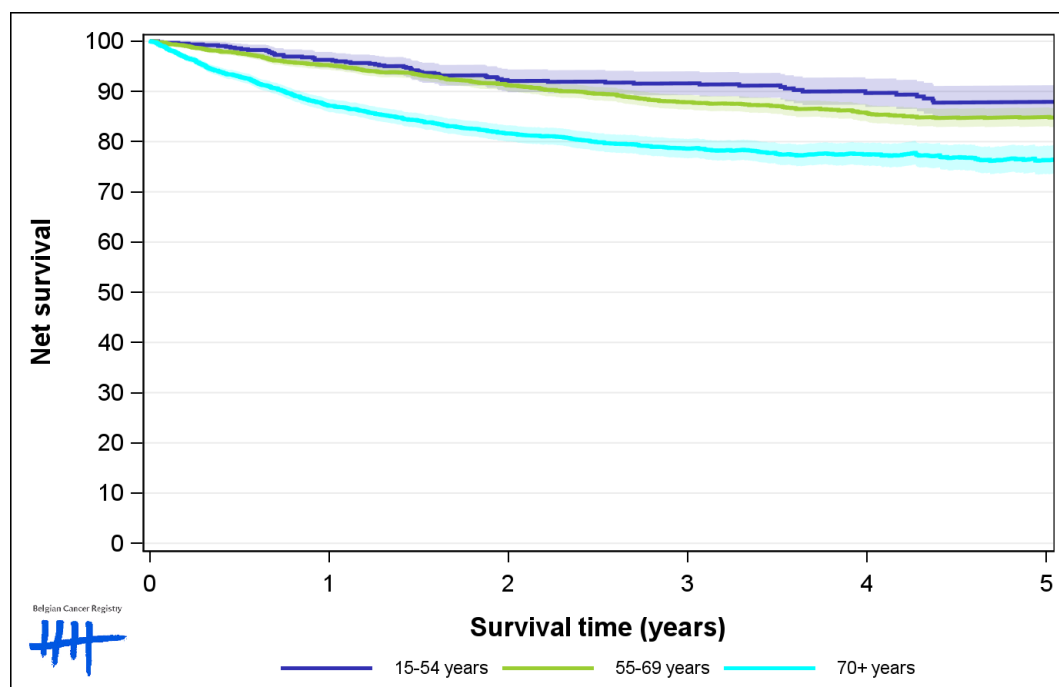


Figure 8: Corpus Uteri Cancer: net survival by region, Belgium 2018-2022

