

Belgian Cancer Registry



Cancer Fact Sheet

Melanoma

ICD10 : C43

Belgium 2022

1. Cancer Incidence

1.1. Number of new diagnoses and incidence rates

Table 1: Melanoma: Average age at diagnosis, number of new cancer diagnoses (N), crude rate (CR), age-standardised incidence rates (ESR and WSR) and cumulative risk by sex and region, 2022

Males	Age (years)	N	CR	ESR	WSR	CRi
Belgium	64.8	1,890	33.1	35.0	17.9	1.95
Brussels-Capital Region	65.9	137	22.8	34.3	15.2	1.73
Flemish Region	64.7	1,278	38.5	38.5	20.3	2.19
Walloon Region	64.6	475	26.5	28.8	14.6	1.59

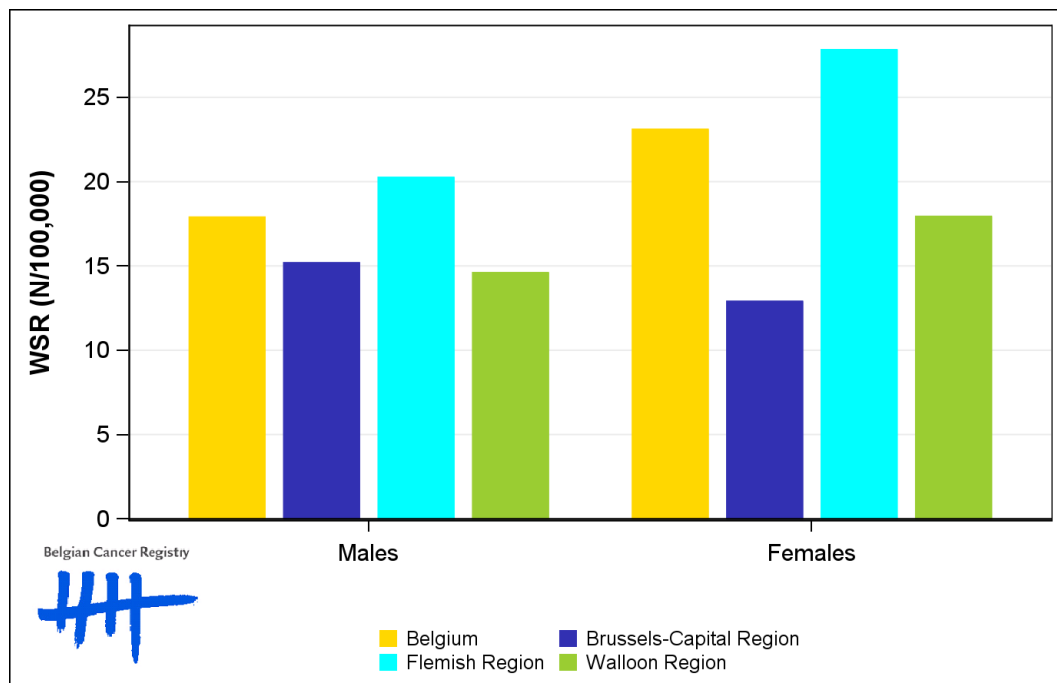
Females	Age (years)	N	CR	ESR	WSR	CRi
Belgium	60.5	2,256	38.4	37.6	23.1	2.43
Brussels-Capital Region	62.0	123	19.8	23.2	12.9	1.48
Flemish Region	60.5	1,579	46.7	44.7	27.8	2.91
Walloon Region	60.1	554	29.6	29.1	17.9	1.87

CR=Crude (all ages) Rate (N/100,000 person-years)
 ESR=Age-Standardised Rate, using 2013 revised European Standard Population (N/100,000 person-years)
 WSR=Age-Standardised Rate, using the World Standard Population (N/100,000 person-years)
 CRi=Cumulative Risk for 0-74 years (%)

Belgian Cancer Registry



Figure 1: Melanoma: Age-standardised incidence rates by sex and region, 2022



1.2. Age-specific incidence rates

Table 2: Melanoma: Age-specific incidence rates, crude rate (CR) and age-standardised incidence rates (ESR and WSR) by sex, Belgium 2022

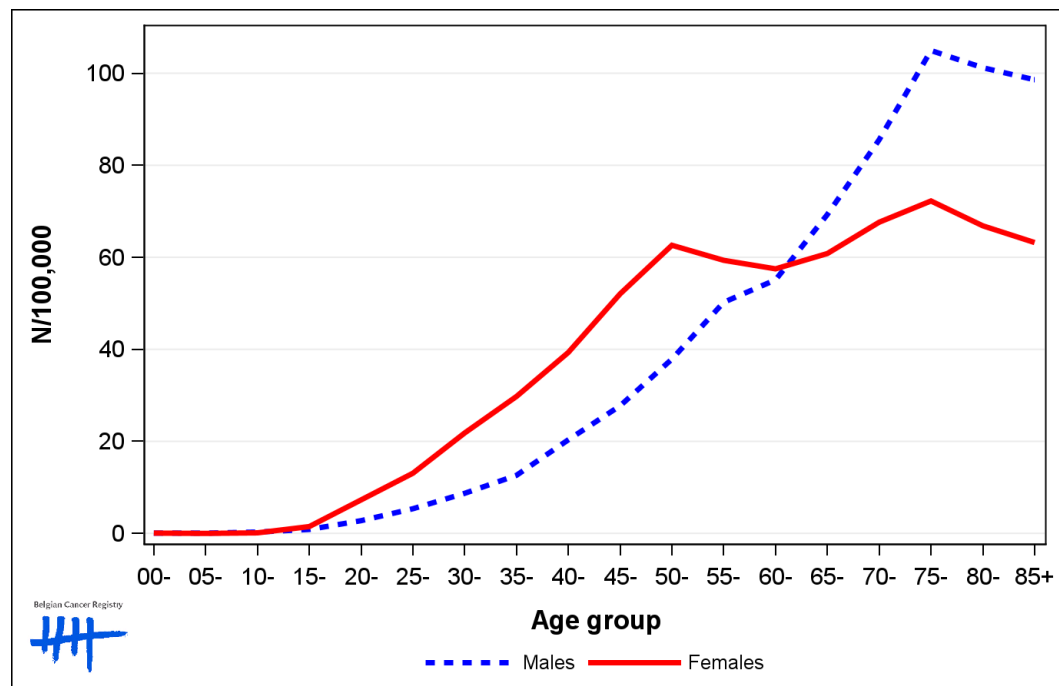
	00-	05-	10-	15-	20-	25-	30-	35-	40-	45-	50-	55-	60-	65-	70-	75-	80-	85+	CR	ESR	WSR
Males	0.0	0.0	0.9	0.9	3.2	6.0	7.8	12.9	18.7	28.5	39.4	48.3	56.6	81.0	89.4	126.2	116.1	139.1	33.1	35.0	17.9
Females	0.0	0.0	0.0	1.6	5.7	11.4	20.9	26.8	40.4	46.8	63.1	61.7	66.6	69.2	78.2	87.0	71.8	69.0	38.4	37.6	23.1

CR=Crude (all ages) Rate (N/100,000 person-years)

ESR (2013)=Age-Standardised Rate, using the 2013 revised European Standard Population (N/100,000 person-years)

WSR=Age-Standardised Rate, using the World Standard Population (N/100,000 person-years)

Figure 2: Melanoma: Age-specific incidence rates by sex, 2018-2022



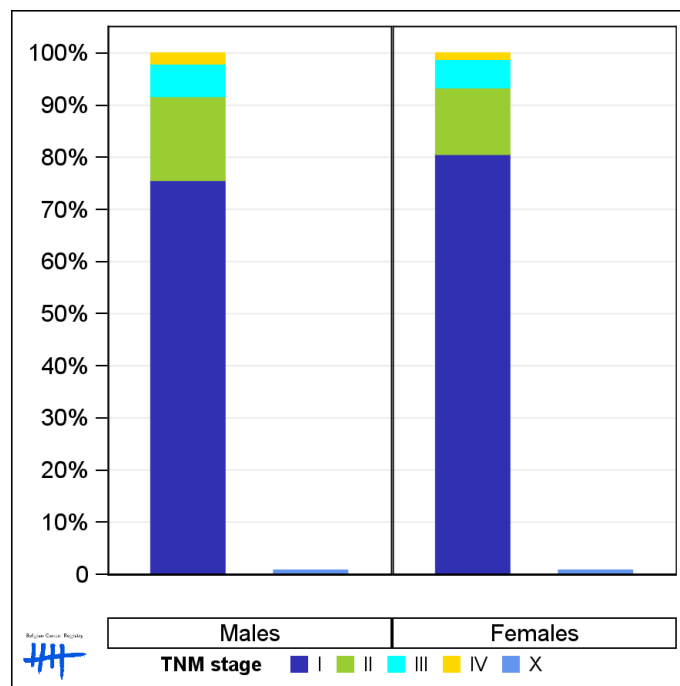
1.3. Combined stage

Table 3: Melanoma: Distribution of combined stage by sex, Belgium 2022

	Stage I	Stage II	Stage III	Stage IV	Stage X	Stage NA	Total
Males							
N	1,376	293	114	37	14	56	1,890
%	72.8	15.5	6.0	2.0	0.7	3.0	100
Females							
N	1,763	280	118	26	17	52	2,256
%	78.1	12.4	5.2	1.2	0.8	2.3	100

Staging according to the TNM 8th edition (Ref: Brierley JD, Gospodarowicz MK, Wittekind Ch. TNM classification of malignant tumours, UICC 8th edition)
 Combined TNM stage : compilation of pathological (pTNM) and clinical (cTNM) stage. pTNM prevails over cTNM, except when cTNM stage is IV
 Stage X: diagnoses with an unknown stage
 Stage NA: diagnoses with a histological diagnosis where no stage can be evaluated (Not Applicable)

Figure 3: Melanoma: Bar chart of known combined stage by sex, Belgium 2022



1.4. Trends in incidence

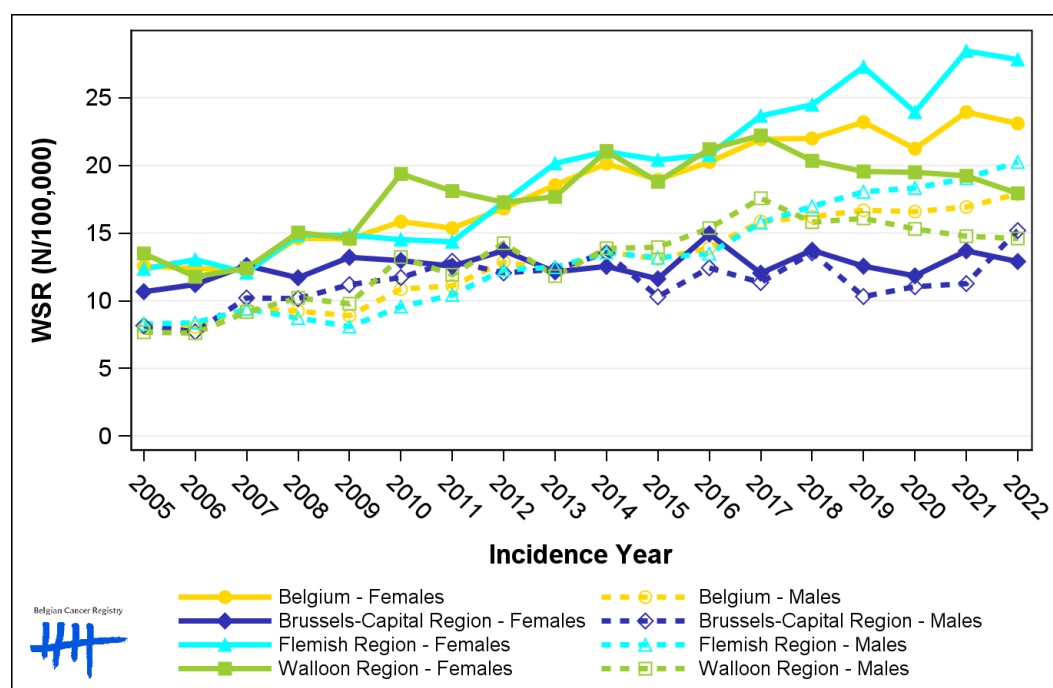
Table 4: Melanoma: Age-standardised incidence rates (WSR) and average annual percentage change (AAPC) by incidence year, sex and region

Males	2008	2009	2010	2011	2012	2013	2014	2015	2016	2017	2018	2019	2020	2021	2022	AAPC	95% CI
Belgium	9.2	8.9	10.9	11.1	12.9	12.2	13.6	13.1	13.9	15.9	16.2	16.7	16.6	16.9	17.9	4.8	[4.1; 5.6]
Brussels-Capital Region	10.2	11.2	11.7	12.9	12.1	12.3	13.5	10.3	12.4	11.3	13.5	10.3	11.0	11.3	15.2	0.6	[-0.8; 2.1]
Flemish Region	8.7	8.1	9.6	10.4	12.3	12.5	13.6	13.2	13.5	15.8	17.0	18.0	18.3	19.1	20.3	6.6	[5.8; 7.4]
Walloon Region	10.2	9.8	13.2	11.9	14.3	11.8	13.9	14.0	15.4	17.6	15.8	16.1	15.3	14.8	14.6	2.5	[1.5; 3.6]

Females	2008	2009	2010	2011	2012	2013	2014	2015	2016	2017	2018	2019	2020	2021	2022	AAPC	95% CI
Belgium	14.6	14.6	15.9	15.4	16.8	18.5	20.1	18.9	20.3	21.9	22.0	23.2	21.2	23.9	23.1	3.6	[3.0; 4.2]
Brussels-Capital Region	11.7	13.2	13.0	12.6	13.7	12.1	12.5	11.6	14.9	12.0	13.7	12.6	11.8	13.7	12.9	0.2	[-0.7; 1.2]
Flemish Region	14.9	14.9	14.5	14.4	17.3	20.2	21.0	20.4	20.8	23.7	24.5	27.3	23.9	28.5	27.8	5.4	[4.4; 6.4]
Walloon Region	15.0	14.6	19.4	18.1	17.3	17.7	21.1	18.8	21.2	22.2	20.3	19.6	19.5	19.2	17.9	1.5	[0.5; 2.5]

WSR=Age-Standardised Rate, using the World Standard Population (N/100,000 person-years)
 AAPC = Average Annual Percentage Change over the 2008-2022 period

Figure 4: Melanoma: Age-standardised incidence rates (WSR) by incidence year, sex and region



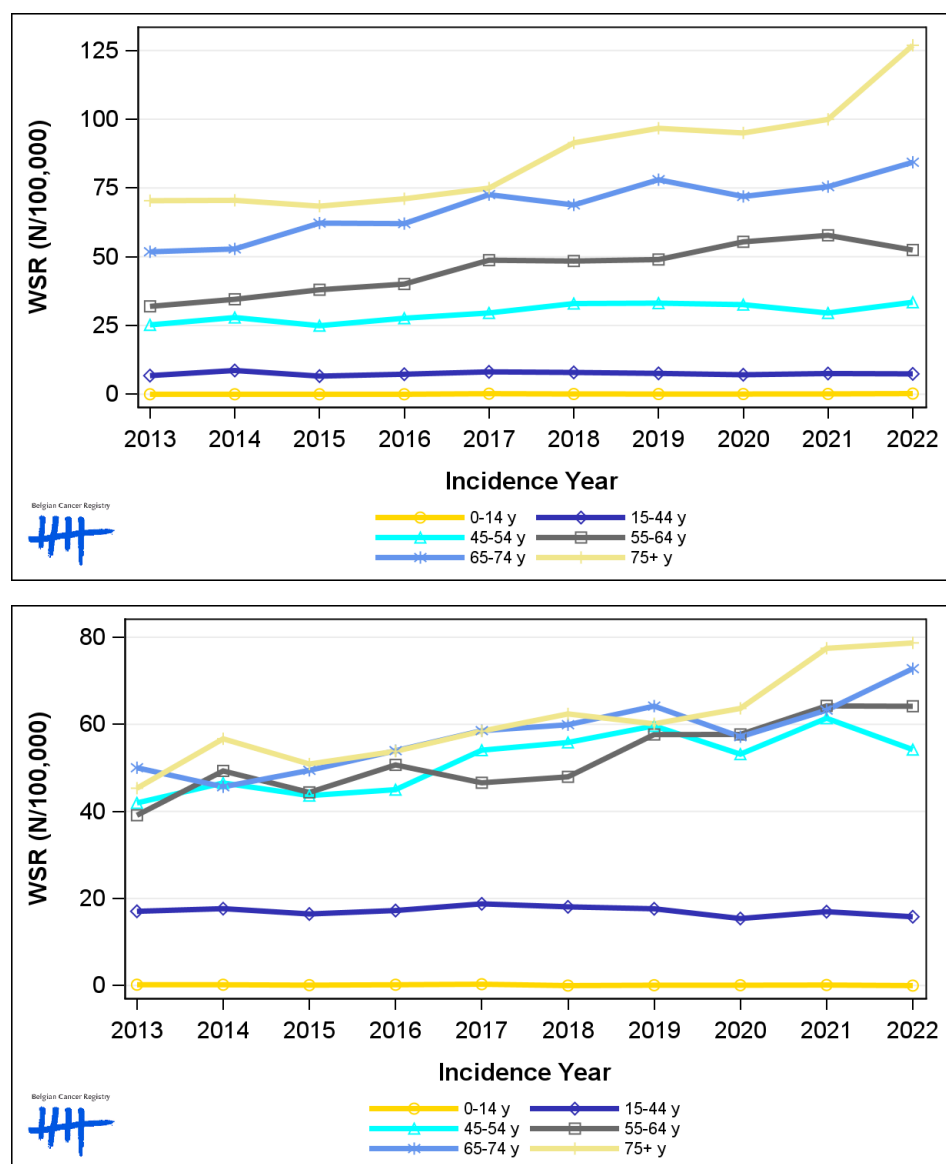
1.5. Incidence by broad age groups

Table 5: Melanoma: Number of new diagnoses and age-standardised incidence rates (WSR) by broad age groups and incidence year by sex, Belgium

	N											WSR									
	2013	2014	2015	2016	2017	2018	2019	2020	2021	2022	2013	2014	2015	2016	2017	2018	2019	2020	2021	2022	
Males																					
All ages	1,099	1,199	1,204	1,283	1,467	1,552	1,663	1,660	1,709	1,890	12.2	13.6	13.1	13.9	15.9	16.2	16.7	16.6	16.9	17.9	
0-14 y	0	0	0	0	2	1	1	1	1	3	0.0	0.0	0.0	0.0	0.2	<0.1	<0.1	<0.1	0.1	0.2	
15-44 y	167	213	164	180	203	195	189	179	189	185	6.8	8.6	6.6	7.3	8.1	7.9	7.6	7.1	7.5	7.4	
45-54 y	209	228	205	225	238	266	273	261	235	263	25.2	27.9	24.9	27.7	29.6	33.0	33.1	32.6	29.5	33.5	
55-64 y	217	237	264	282	351	354	365	419	442	404	32.0	34.5	38.0	40.1	48.7	48.4	49.0	55.4	57.8	52.4	
65-74 y	240	251	303	312	378	372	436	411	435	489	51.8	52.8	62.2	62.0	72.6	68.8	78.0	71.9	75.5	84.3	
75+ y	266	270	268	284	295	364	399	389	407	546	70.4	70.5	68.4	71.1	75.0	91.4	96.7	95.0	99.9	126.9	
Females																					
All ages	1,561	1,734	1,640	1,789	1,929	1,965	2,087	1,970	2,277	2,256	18.5	20.1	18.9	20.3	21.9	22.0	23.2	21.2	23.9	23.1	
0-14 y	2	2	1	2	3	0	1	1	1	0	0.2	0.2	0.1	0.2	0.3	0.0	<0.1	<0.1	0.1	0.0	
15-44 y	418	433	395	421	453	438	431	378	425	398	17.1	17.7	16.5	17.2	18.8	18.1	17.6	15.4	17.0	15.8	
45-54 y	337	370	351	357	430	445	469	411	472	416	42.0	46.5	43.6	45.0	54.1	55.8	59.7	53.2	61.4	54.2	
55-64 y	272	345	317	366	343	358	436	443	496	497	39.1	49.3	44.4	50.7	46.6	47.9	57.7	57.7	64.2	64.2	
65-74 y	261	240	267	298	335	352	385	350	402	461	50.0	45.6	49.4	53.9	58.5	59.9	64.2	57.1	63.3	72.8	
75+ y	271	344	309	345	365	372	365	387	481	484	45.3	56.7	50.9	53.8	58.4	62.4	60.1	63.7	77.5	78.7	

N=Number of invasive tumours
WSR=Age-Standardised Rate, using the World Standard Population (N/100,000 person-years)

Figure 5: Melanoma: Age-standardised incidence rates (WSR) versus incidence year by broad age groups for males (top) and females (bottom), Belgium



2. Net survival

Table 6: Melanoma: 5-year net survival by sex, age group and region, Belgium 2018-2022

	5-year net survival 2018-2022 (%)					
	Males			Females		
	N at risk	estimate	95% CI	N at risk	estimate	95% CI
Overall	8,205	94.9	[93.3, 96.5]	10,306	96.7	[95.6, 97.8]
Age group						
15-34 years	318	94.7	[91.5, 97.9]	775	98.6	[97.4, 99.8]
35-64 years	3,813	95.5	[94.5, 96.6]	5,591	98.1	[97.5, 98.7]
65+ years	4,079	94.3	[91.3, 97.5]	3,948	94.2	[91.4, 97.0]
Region						
Brussels-Capital Region	520	89.4	[81.6, 97.9]	604	97.2	[91.9, 102.8]
Flemish Region	5,438	94.9	[93.1, 96.8]	6,991	96.6	[95.2, 97.9]
Walloon Region	2,247	96.0	[93.1, 98.9]	2,711	96.8	[94.8, 98.8]

Figure 6: Melanoma: net survival by sex, Belgium 2018-2022

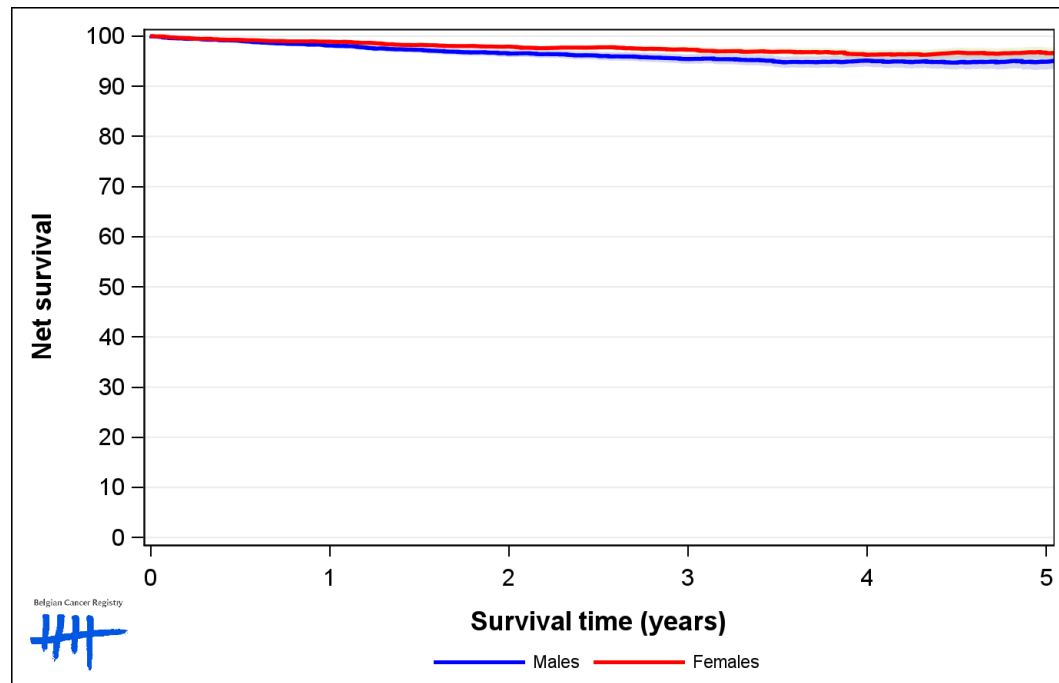


Figure 7: Melanoma: net survival by age group in males, Belgium 2018-2022

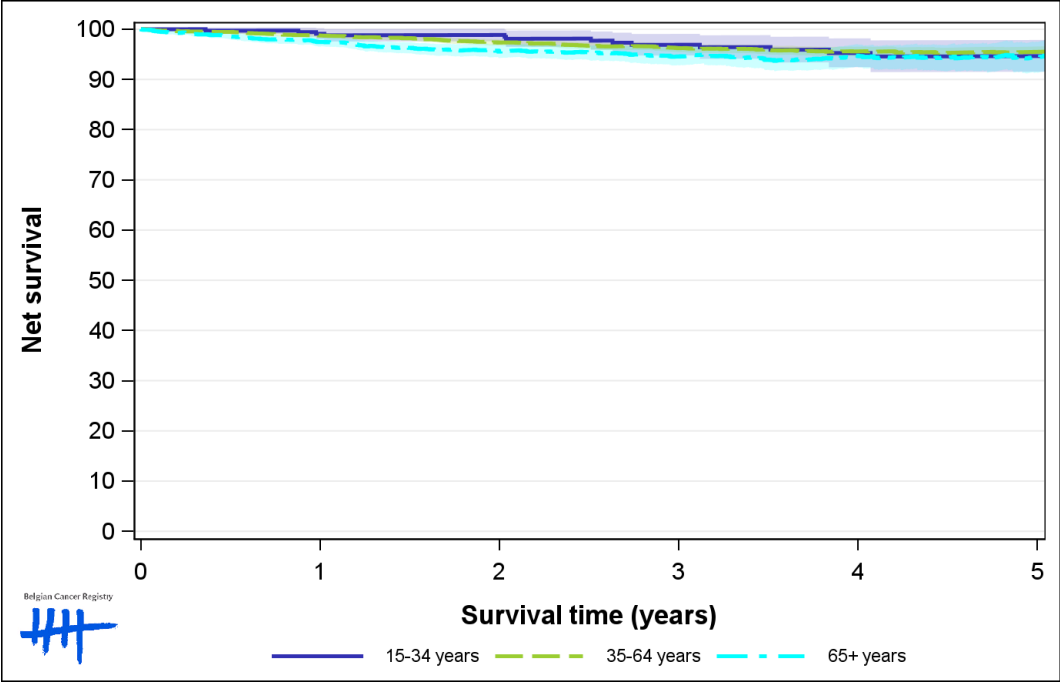


Figure 8: Melanoma: net survival by age group in females, Belgium 2018-2022

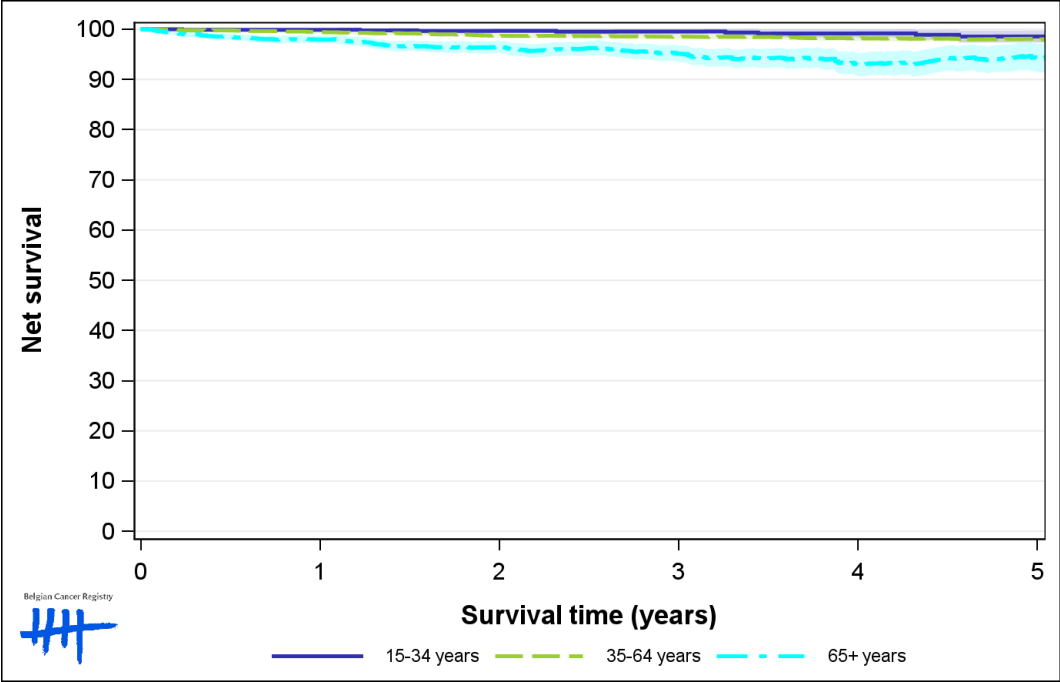


Figure 9: Melanoma: net survival by region in males, Belgium 2018-2022

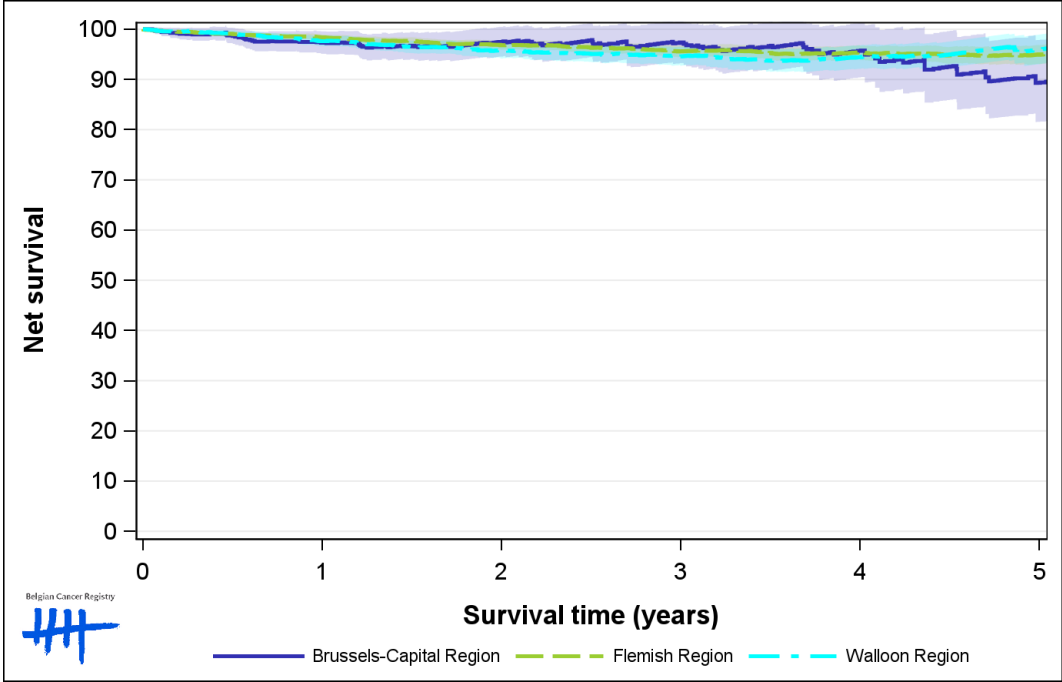


Figure 10: Melanoma: net survival by region in females, Belgium 2018-2022

