

Belgian Cancer Registry



Cancer Fact Sheet

Melanoma

ICD10 : C43

Belgium 2020

1. Cancer Incidence

1.1. Number of new diagnoses and incidence rates

Table 1: Melanoma: Average age at diagnosis, number of new cancer diagnoses (N), crude rate (CR), age-standardised incidence rates (ESR and WSR) and cumulative risk by sex and region, 2020

Males	Age (years)	N	CR	ESR	WSR	CRi
Belgium	63.1	1,656	29.3	22.9	16.6	1.85
Brussels-Capital Region	68.8	99	16.6	16.8	11.0	1.21
Flemish Region	63.3	1,103	33.6	25.3	18.3	2.04
Walloon Region	61.2	454	25.5	20.7	15.3	1.70

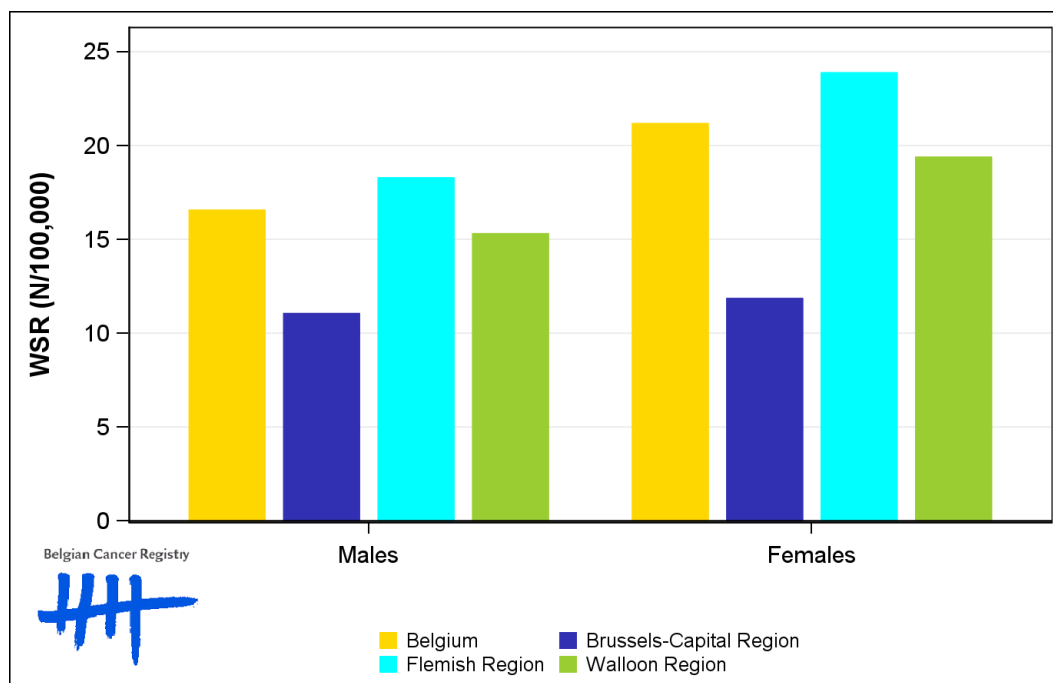
Females	Age (years)	N	CR	ESR	WSR	CRi
Belgium	58.9	1,962	33.6	27.5	21.2	2.17
Brussels-Capital Region	61.6	114	18.4	16.2	11.8	1.32
Flemish Region	59.5	1,309	39.1	31.3	23.9	2.47
Walloon Region	56.9	539	28.9	24.4	19.4	1.91

CR=Crude (all ages) Rate (N/100,000 person-years)
 ESR (1976)=Age-Standardised Rate, using the European Standard Population (N/100,000 person-years)
 WSR=Age-Standardised Rate, using the World Standard Population (N/100,000 person-years)
 CRi=Cumulative Risk for 0-74 years (%)

Belgian Cancer Registry



Figure 1: Melanoma: Age-standardised incidence rates by sex and region, 2020



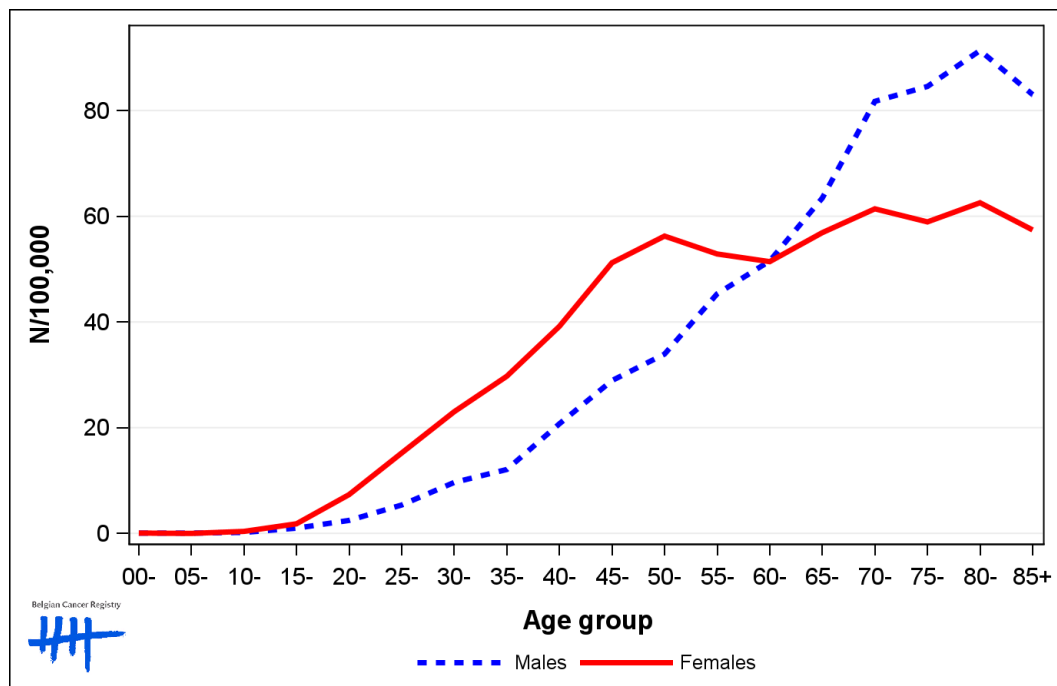
1.2. Age-specific incidence rates

Table 2: Melanoma: Age-specific incidence rates, crude rate (CR) and age-standardised incidence rates (ESR and WSR) by sex, Belgium 2020

	00-	05-	10-	15-	20-	25-	30-	35-	40-	45-	50-	55-	60-	65-	70-	75-	80-	85+	CR	ESR	WSR
Males	0.0	0.0	0.3	0.6	2.7	3.5	8.1	13.4	20.0	28.3	37.7	53.1	57.7	62.2	85.7	101.0	95.7	80.7	29.3	22.9	16.6
Females	0.0	0.0	0.3	1.0	5.5	15.7	21.0	27.5	31.4	51.1	55.1	61.9	53.7	56.0	58.8	66.3	64.0	55.5	33.6	27.5	21.2

CR=Crude (all ages) Rate (N/100,000 person-years)
 ESR (1976)=Age-Standardised Rate, using the European Standard Population (N/100,000 person-years)
 WSR=Age-Standardised Rate, using the World Standard Population (N/100,000 person-years)

Figure 2: Melanoma: Age-specific incidence rates by sex, 2016-2020



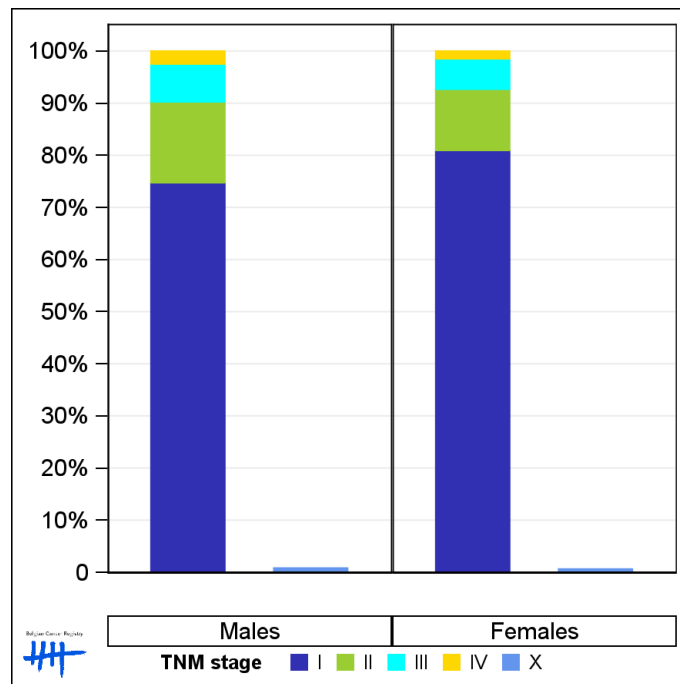
1.3. Combined stage

Table 3: Melanoma: Distribution of combined stage by sex, Belgium 2020

	Stage I	Stage II	Stage III	Stage IV	Stage X	Stage NA	Total
Males							
N	1,193	248	116	39	13	47	1,656
%	72.0	15.0	7.0	2.4	0.8	2.8	100
Females							
N	1,554	226	112	28	12	30	1,962
%	79.2	11.5	5.7	1.4	0.6	1.5	100

Staging according to the TNM 8th edition (Ref: Brierley JD, Gospodarowicz MK, Wittekind Ch. TNM classification of malignant tumours, UICC 8th edition)
 Combined TNM stage : compilation of pathological (pTNM) and clinical (cTNM) stage. pTNM prevails over cTNM, except when cTNM stage is IV
 Stage X: diagnoses with an unknown stage
 Stage NA: diagnoses with a histological diagnosis where no stage can be evaluated (Not Applicable)

Figure 3: Melanoma: Bar chart of known combined stage by sex, Belgium 2020



1.4. Trends in incidence

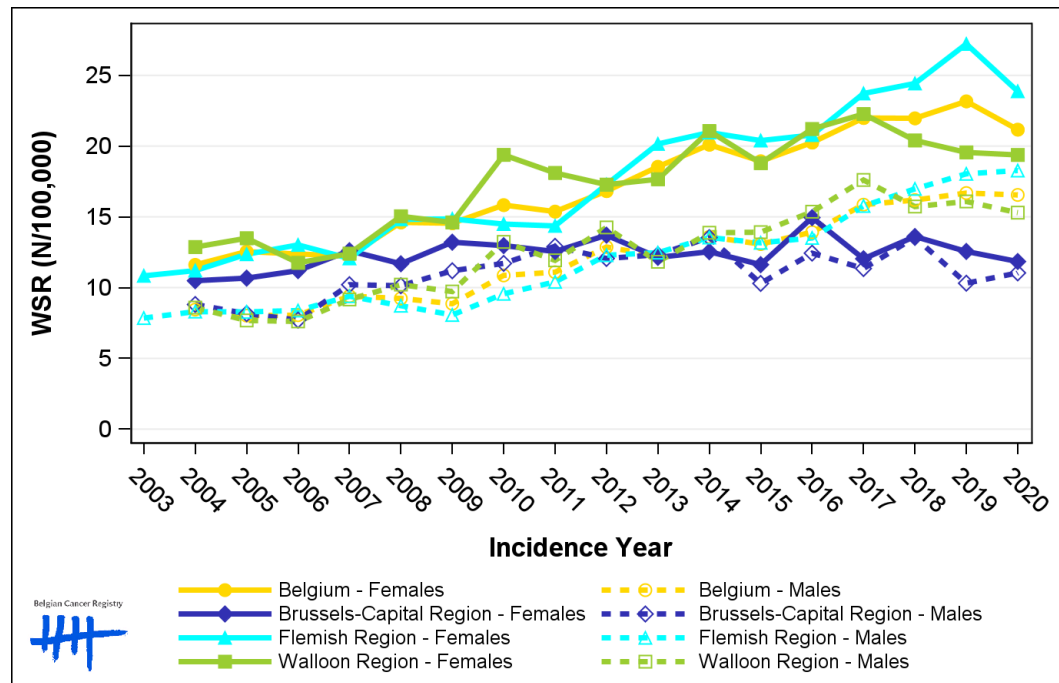
Table 4: Melanoma: Age-standardised incidence rates (WSR) and average annual percentage change (AAPC) by incidence year, sex and region

Males	2006	2007	2008	2009	2010	2011	2012	2013	2014	2015	2016	2017	2018	2019	2020	AAPC	95% CI
Belgium	8.1	9.4	9.2	8.9	10.9	11.1	12.9	12.2	13.6	13.1	13.9	15.9	16.2	16.7	16.6	5.4	[4.6; 6.2]
Brussels-Capital Region	7.7	10.2	10.1	11.2	11.7	12.9	12.1	12.3	13.5	10.3	12.4	11.3	13.5	10.3	11.0	2.0	[0.7; 3.2]
Flemish Region	8.4	9.4	8.7	8.1	9.6	10.4	12.3	12.5	13.5	13.2	13.5	15.8	17.0	18.0	18.3	5.8	[4.8; 6.7]
Walloon Region	7.6	9.2	10.2	9.7	13.2	11.9	14.3	11.8	13.9	13.9	15.4	17.6	15.7	16.1	15.3	5.0	[3.7; 6.3]

Females	2006	2007	2008	2009	2010	2011	2012	2013	2014	2015	2016	2017	2018	2019	2020	AAPC	95% CI
Belgium	12.4	12.2	14.6	14.6	15.8	15.4	16.8	18.5	20.1	18.9	20.3	22.0	22.0	23.2	21.2	4.5	[3.9; 5.1]
Brussels-Capital Region	11.2	12.6	11.7	13.2	13.0	12.6	13.7	12.1	12.5	11.6	14.9	12.0	13.6	12.6	11.8	0.3	[-0.6; 1.3]
Flemish Region	13.0	12.1	14.8	14.9	14.5	14.4	17.3	20.2	21.0	20.4	20.8	23.7	24.4	27.2	23.9	5.7	[4.7; 6.7]
Walloon Region	11.8	12.4	15.0	14.6	19.4	18.1	17.3	17.7	21.1	18.8	21.2	22.3	20.4	19.6	19.4	3.7	[2.5; 4.8]

WSR=Age-Standardised Rate, using the World Standard Population (N/100,000 person-years)
 AAPC = Average Annual Percentage Change over the 2006-2020 period

Figure 4: Melanoma: Age-standardised incidence rates (WSR) by incidence year, sex and region



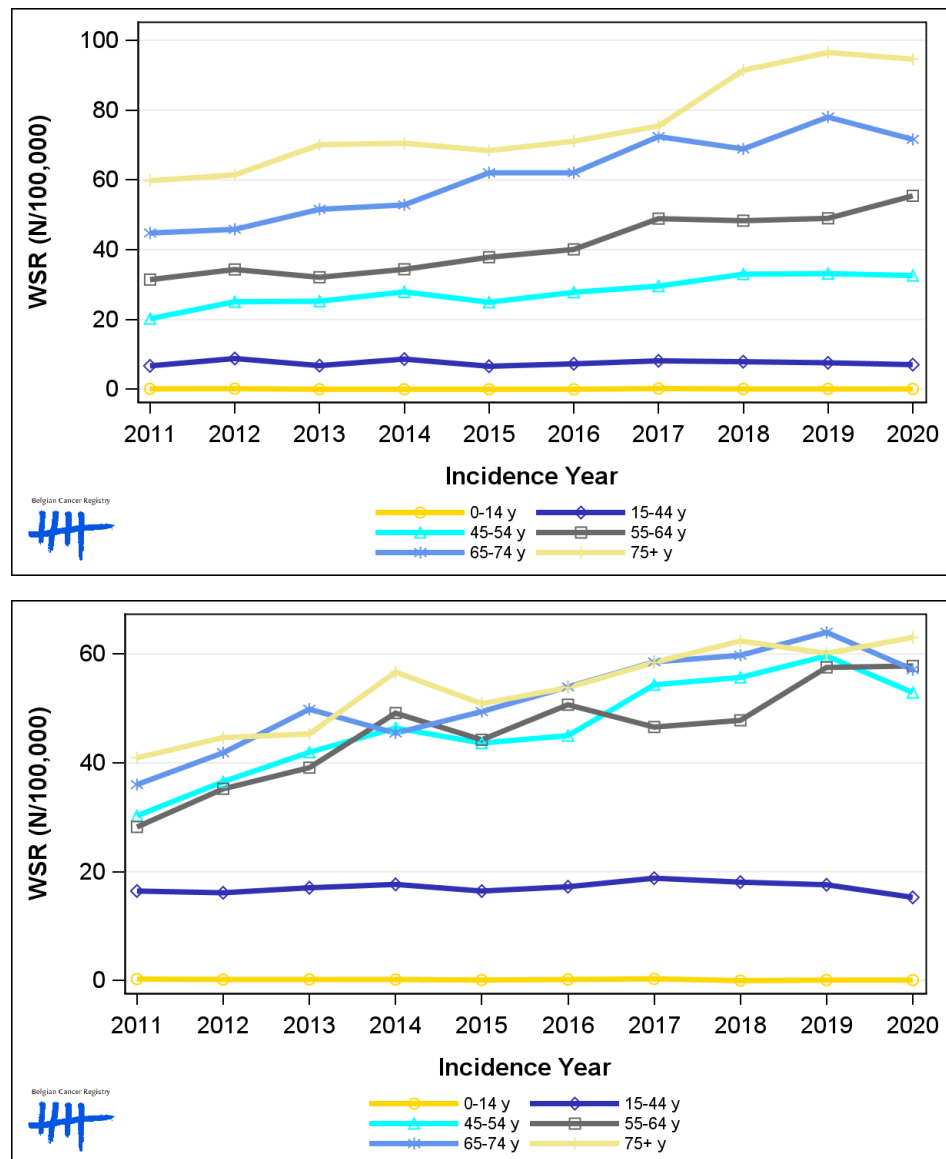
1.5. Incidence by broad age groups

Table 5: Melanoma: Number of new diagnoses and age-standardised incidence rates (WSR) by broad age groups and incidence year by sex, Belgium

	N										WSR									
	2011	2012	2013	2014	2015	2016	2017	2018	2019	2020	2011	2012	2013	2014	2015	2016	2017	2018	2019	2020
Males																				
All ages	945	1,091	1,098	1,198	1,202	1,284	1,469	1,550	1,662	1,656	11.1	12.9	12.2	13.6	13.1	13.9	15.9	16.2	16.7	16.6
0-14 y	1	2	0	0	0	0	2	1	1	1	0.1	0.2	0.0	0.0	0.0	0.0	0.2	<0.1	<0.1	<0.1
15-44 y	166	223	167	213	164	180	203	194	189	178	6.7	8.8	6.8	8.6	6.6	7.3	8.1	7.9	7.6	7.1
45-54 y	164	205	209	228	205	226	238	266	273	261	20.2	25.1	25.2	27.9	24.9	27.8	29.6	33.0	33.1	32.6
55-64 y	209	229	218	236	263	282	352	353	365	419	31.4	34.3	32.1	34.4	37.8	40.1	48.9	48.3	49.0	55.4
65-74 y	194	208	239	251	302	312	377	372	436	409	44.8	45.8	51.6	52.8	62.0	62.0	72.4	68.9	78.0	71.6
75+ y	211	224	265	270	268	284	297	364	398	388	59.8	61.4	70.1	70.5	68.4	71.1	75.5	91.4	96.5	94.6
Females																				
All ages	1,261	1,407	1,560	1,731	1,639	1,789	1,932	1,962	2,084	1,962	15.4	16.8	18.5	20.1	18.9	20.3	22.0	22.0	23.2	21.2
0-14 y	3	2	2	2	1	2	3	0	1	1	0.3	0.2	0.2	0.2	0.1	0.2	0.3	0.0	<0.1	<0.1
15-44 y	396	390	418	433	395	421	454	438	430	375	16.5	16.1	17.1	17.7	16.5	17.2	18.8	18.1	17.6	15.3
45-54 y	241	292	337	369	351	357	432	444	469	409	30.3	36.5	42.0	46.4	43.6	45.0	54.4	55.7	59.7	52.9
55-64 y	192	243	272	344	316	366	343	357	435	444	28.2	35.2	39.1	49.1	44.2	50.7	46.6	47.8	57.5	57.8
65-74 y	177	211	260	239	267	298	335	351	384	350	36.0	41.9	49.9	45.5	49.4	53.9	58.5	59.8	64.0	57.1
75+ y	252	269	271	344	309	345	365	372	365	383	40.9	44.7	45.3	56.7	50.9	53.8	58.4	62.4	60.1	63.0

N=Number of invasive tumours
WSR=Age-Standardised Rate, using the World Standard Population (N/100,000 person-years)

Figure 5: Melanoma: Age-standardised incidence rates (WSR) versus incidence year by broad age groups for males (top) and females (bottom), Belgium



2. Relative survival

Table 6: Melanoma: 5-year relative survival proportion by sex, age group and region, Belgium 2016-2020

	5-year relative survival 2016-2020 (%)					
	Males			Females		
	N at risk	estimate	95% CI	N at risk	estimate	95% CI
Overall	7,392	94.2	[92.8, 95.5]	9,515	97.3	[96.3, 98.2]
Age group						
15-34 years	327	95.0	[91.4, 97.2]	835	98.2	[96.6, 99.1]
35-64 years	3,554	94.1	[92.7, 95.3]	5,206	98.1	[97.4, 98.7]
65+ years	3,515	94.4	[91.5, 97.1]	3,478	95.7	[93.2, 98.1]
Region						
Brussels-Capital Region	475	97.0	[90.6, 102.4]	596	101.9	[97.5, 105.3]
Flemish Region	4,703	92.8	[90.9, 94.5]	6,172	96.7	[95.5, 97.8]
Walloon Region	2,214	96.4	[93.9, 98.7]	2,749	97.5	[95.8, 99.1]

Figure 6: Melanoma: relative survival proportion by sex, Belgium 2016-2020

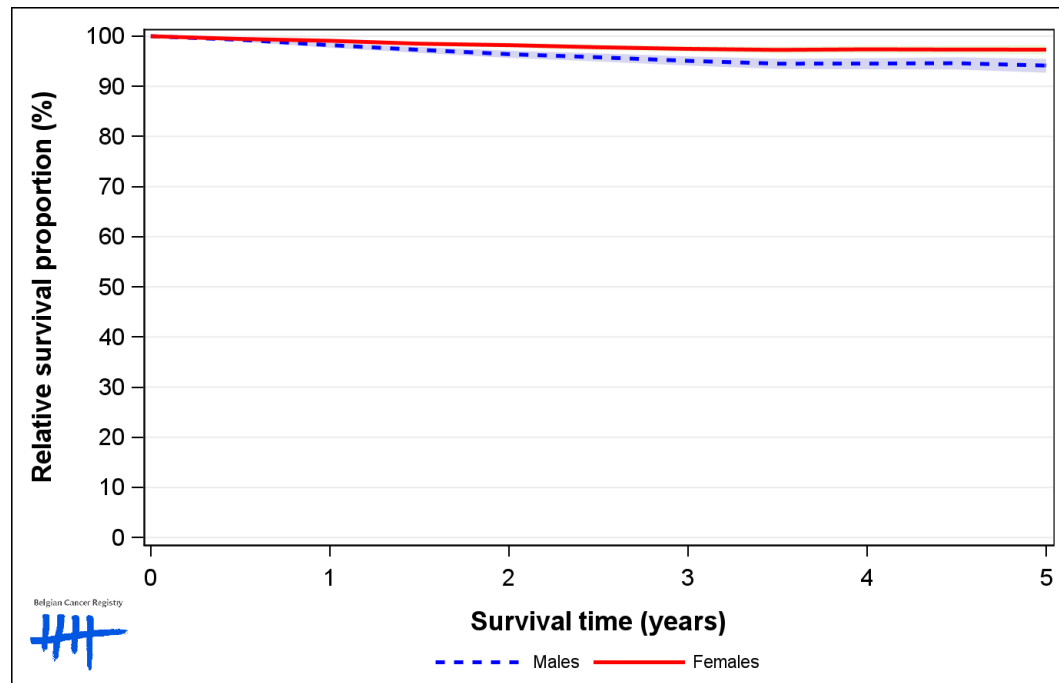


Figure 7: Melanoma: relative survival proportion by age group in males, Belgium 2016-2020

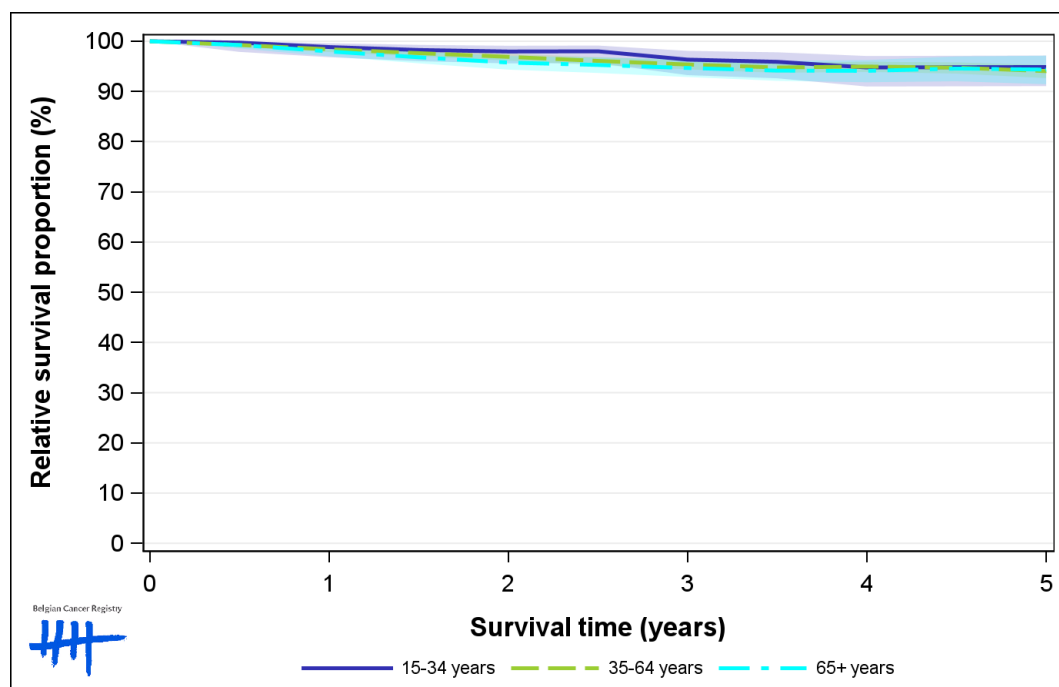


Figure 8: Melanoma: relative survival proportion by age group in females, Belgium 2016-2020

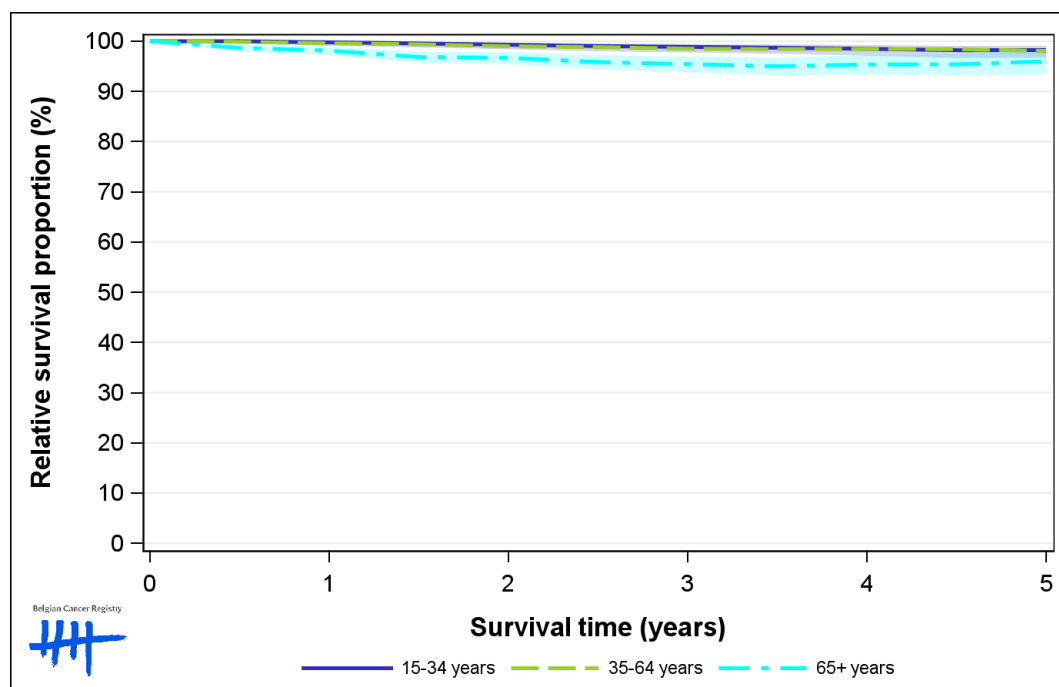


Figure 9: Melanoma: relative survival proportion by region in males, Belgium 2016-2020

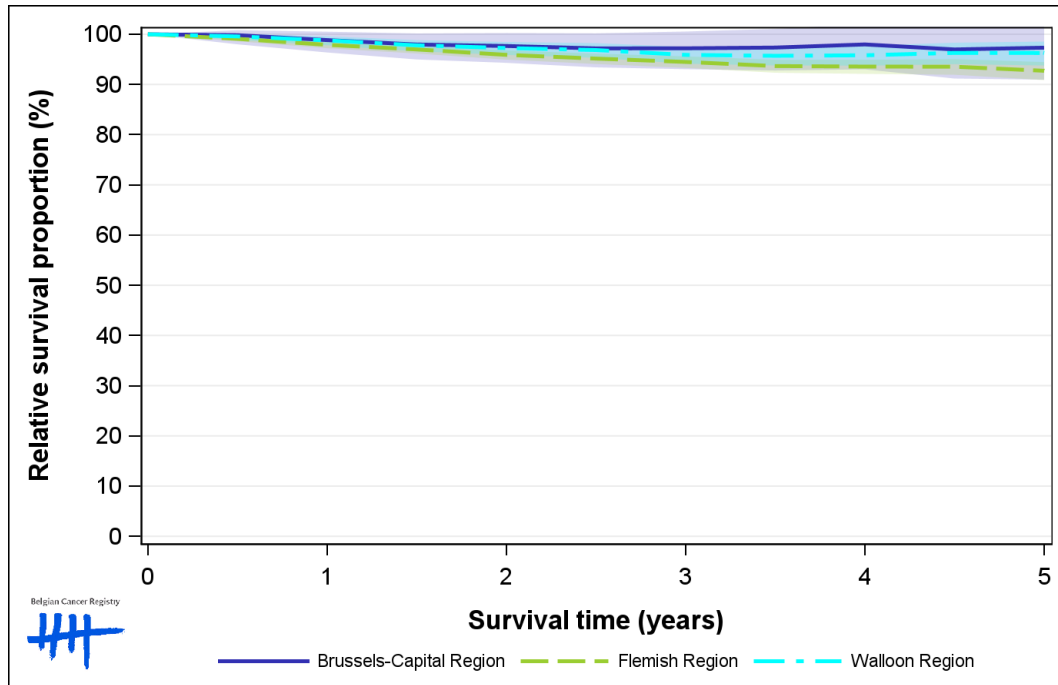


Figure 10: Melanoma: relative survival proportion by region in females, Belgium 2016-2020

