

Belgian Cancer Registry



Cancer Fact Sheet

Melanoma

ICD10 : C43

Belgium 2021

1. Cancer Incidence

1.1. Number of new diagnoses and incidence rates

Table 1: Melanoma: Average age at diagnosis, number of new cancer diagnoses (N), crude rate (CR), age-standardised incidence rates (ESR and WSR) and cumulative risk by sex and region, 2021

Males	Age (years)	N	CR	ESR	WSR	CRi
Belgium	63.3	1,711	30.1	23.4	16.9	1.88
Brussels-Capital Region	65.2	100	16.7	16.7	11.4	1.36
Flemish Region	63.7	1,167	35.4	26.3	19.0	2.12
Walloon Region	61.9	444	24.9	20.2	14.8	1.61

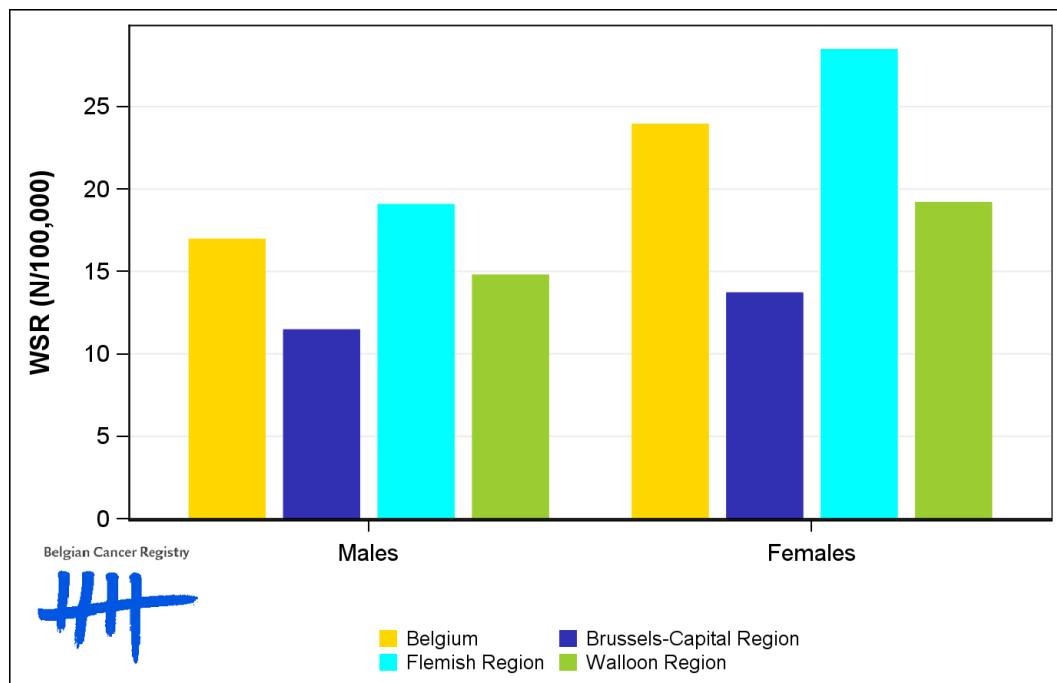
Females	Age (years)	N	CR	ESR	WSR	CRi
Belgium	59.8	2,274	38.9	31.4	23.9	2.45
Brussels-Capital Region	63.2	139	22.4	18.9	13.7	1.39
Flemish Region	59.5	1,559	46.4	37.2	28.4	2.95
Walloon Region	59.6	576	30.9	24.8	19.2	1.89

CR=Crude (all ages) Rate (N/100,000 person-years)
 ESR (1976)=Age-Standardised Rate, using the European Standard Population (N/100,000 person-years)
 WSR=Age-Standardised Rate, using the World Standard Population (N/100,000 person-years)
 CRi=Cumulative Risk for 0-74 years (%)

Belgian Cancer Registry



Figure 1: Melanoma: Age-standardised incidence rates by sex and region, 2021



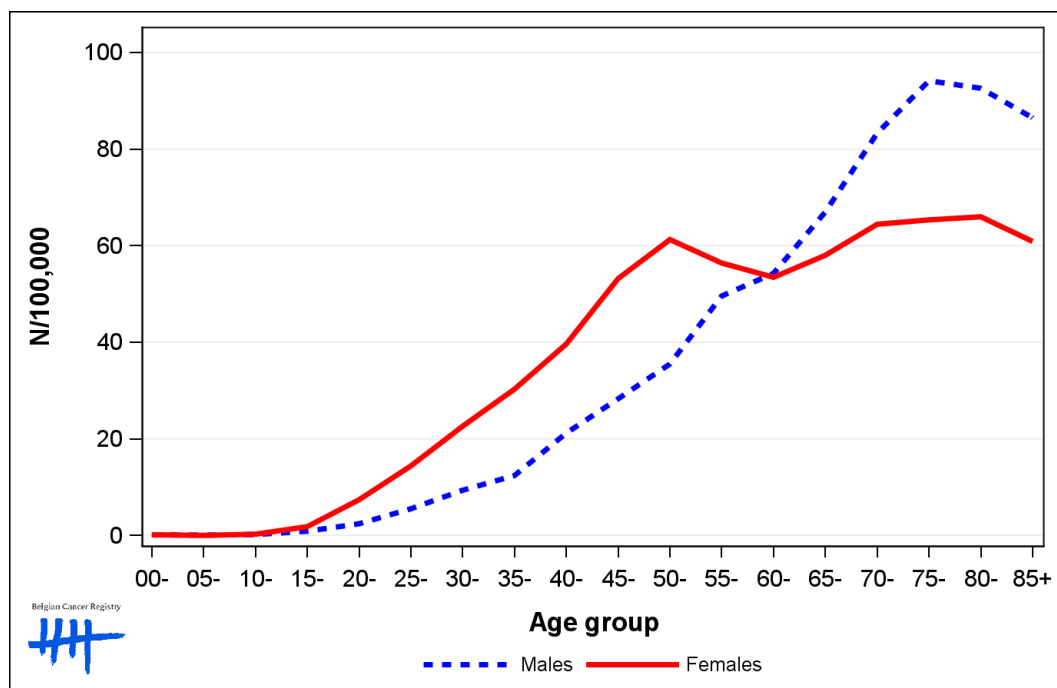
1.2. Age-specific incidence rates

Table 2: Melanoma: Age-specific incidence rates, crude rate (CR) and age-standardised incidence rates (ESR and WSR) by sex, Belgium 2021

	00-	05-	10-	15-	20-	25-	30-	35-	40-	45-	50-	55-	60-	65-	70-	75-	80-	85+	CR	ESR	WSR
Males	0.3	0.0	0.0	0.6	2.9	5.7	7.7	12.6	21.3	24.4	35.7	55.3	60.3	71.5	81.9	112.5	85.7	89.9	30.1	23.4	16.9
Females	0.3	0.0	0.0	1.3	7.3	10.7	20.6	32.8	41.8	55.8	68.3	65.2	63.3	56.4	73.2	76.9	77.3	78.4	38.9	31.4	23.9

CR=Crude (all ages) Rate (N/100,000 person-years)
 ESR (1976)=Age-Standardised Rate, using the European Standard Population (N/100,000 person-years)
 WSR=Age-Standardised Rate, using the World Standard Population (N/100,000 person-years)

Figure 2: Melanoma: Age-specific incidence rates by sex, 2017-2021



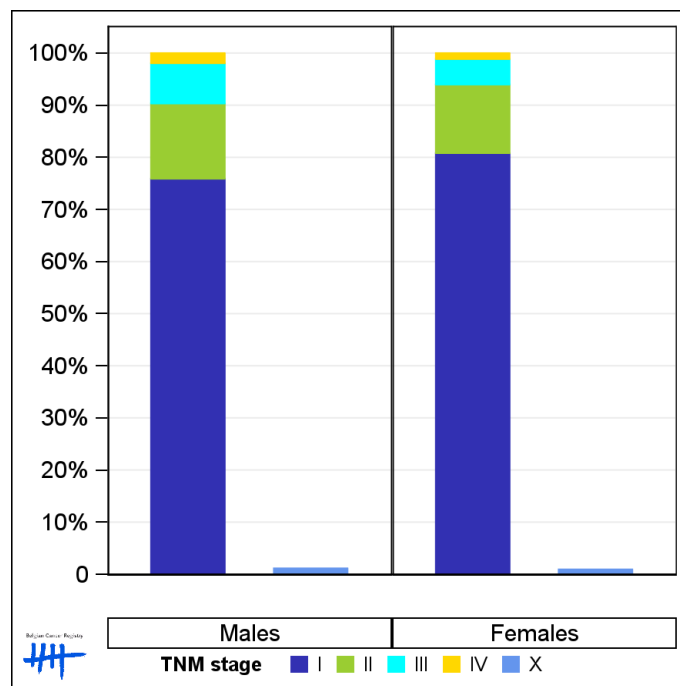
1.3. Combined stage

Table 3: Melanoma: Distribution of combined stage by sex, Belgium 2021

	Stage I	Stage II	Stage III	Stage IV	Stage X	Stage NA	Total
Males							
N	1,250	238	127	32	19	45	1,711
%	73.1	13.9	7.4	1.9	1.1	2.6	100
Females							
N	1,798	293	109	25	21	28	2,274
%	79.1	12.9	4.8	1.1	0.9	1.2	100

Staging according to the TNM 8th edition (Ref: Brierley JD, Gospodarowicz MK, Wittekind Ch. TNM classification of malignant tumours, UICC 8th edition)
 Combined TNM stage : compilation of pathological (pTNM) and clinical (cTNM) stage. pTNM prevails over cTNM, except when cTNM stage is IV
 Stage X: diagnoses with an unknown stage
 Stage NA: diagnoses with a histological diagnosis where no stage can be evaluated (Not Applicable)

Figure 3: Melanoma: Bar chart of known combined stage by sex, Belgium 2021



1.4. Trends in incidence

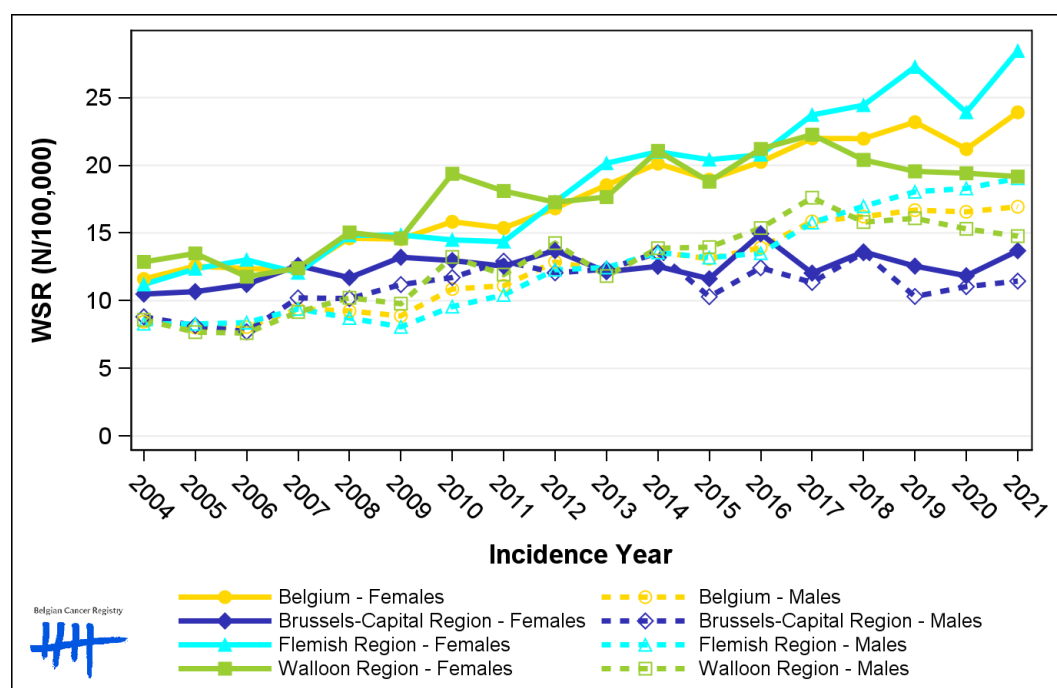
Table 4: Melanoma: Age-standardised incidence rates (WSR) and average annual percentage change (AAPC) by incidence year, sex and region

Males	2007	2008	2009	2010	2011	2012	2013	2014	2015	2016	2017	2018	2019	2020	2021	AAPC	95% CI
Belgium	9.4	9.2	8.9	10.9	11.1	12.9	12.2	13.6	13.1	13.9	15.9	16.2	16.7	16.6	16.9	5.0	[4.2; 5.8]
Brussels-Capital Region	10.2	10.2	11.2	11.7	12.9	12.1	12.3	13.5	10.3	12.4	11.3	13.5	10.3	11.0	11.4	0.2	[-1.0; 1.5]
Flemish Region	9.4	8.7	8.1	9.6	10.4	12.3	12.5	13.6	13.2	13.5	15.8	17.0	18.0	18.3	19.0	5.3	[4.0; 6.5]
Walloon Region	9.2	10.2	9.8	13.2	11.9	14.3	11.8	13.9	14.0	15.4	17.6	15.8	16.1	15.3	14.8	3.2	[2.1; 4.3]

Females	2007	2008	2009	2010	2011	2012	2013	2014	2015	2016	2017	2018	2019	2020	2021	AAPC	95% CI
Belgium	12.2	14.6	14.6	15.8	15.4	16.8	18.5	20.1	18.9	20.3	22.0	22.0	23.2	21.2	23.9	4.4	[3.8; 5.0]
Brussels-Capital Region	12.6	11.7	13.2	13.0	12.6	13.7	12.1	12.5	11.6	14.9	12.0	13.6	12.6	11.8	13.7	0.2	[-0.7; 1.1]
Flemish Region	12.1	14.8	14.9	14.5	14.4	17.3	20.2	21.0	20.4	20.8	23.7	24.4	27.3	23.9	28.4	5.8	[4.8; 6.8]
Walloon Region	12.4	15.0	14.6	19.4	18.1	17.3	17.7	21.1	18.8	21.2	22.3	20.4	19.6	19.4	19.2	2.7	[1.6; 3.7]

WSR=Age-Standardised Rate, using the World Standard Population (N/100,000 person-years)
 AAPC = Average Annual Percentage Change over the 2007-2021 period

Figure 4: Melanoma: Age-standardised incidence rates (WSR) by incidence year, sex and region



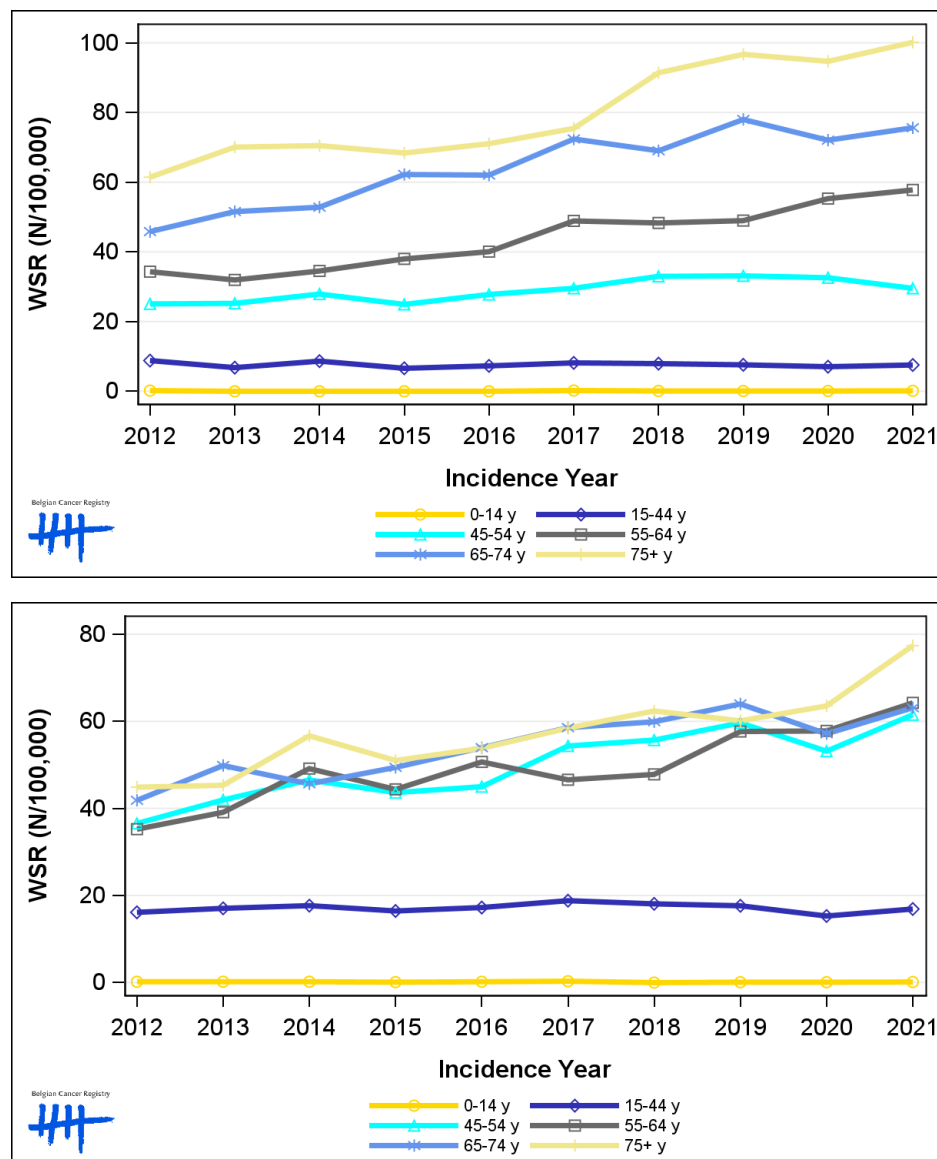
1.5. Incidence by broad age groups

Table 5: Melanoma: Number of new diagnoses and age-standardised incidence rates (WSR) by broad age groups and incidence year by sex, Belgium

	N											WSR									
	2012	2013	2014	2015	2016	2017	2018	2019	2020	2021	2012	2013	2014	2015	2016	2017	2018	2019	2020	2021	
Males																					
All ages	1,091	1,097	1,199	1,204	1,284	1,469	1,552	1,663	1,658	1,711	12.9	12.2	13.6	13.1	13.9	15.9	16.2	16.7	16.6	16.9	
0-14 y	2	0	0	0	0	2	1	1	1	1	0.2	0.0	0.0	0.0	0.0	0.2	<0.1	<0.1	<0.1	0.1	
15-44 y	223	167	213	164	180	203	195	189	178	189	8.8	6.8	8.6	6.6	7.3	8.1	7.9	7.6	7.1	7.5	
45-54 y	205	209	228	205	226	238	266	273	261	235	25.1	25.2	27.9	24.9	27.8	29.6	33.0	33.1	32.6	29.5	
55-64 y	229	217	237	264	282	352	353	365	418	442	34.3	32.0	34.5	38.0	40.1	48.9	48.3	49.0	55.3	57.8	
65-74 y	208	239	251	303	312	377	373	436	412	436	45.8	51.6	52.8	62.2	62.0	72.4	69.0	78.0	72.1	75.6	
75+ y	224	265	270	268	284	297	364	399	388	408	61.4	70.1	70.5	68.4	71.1	75.5	91.4	96.7	94.7	100.2	
Females																					
All ages	1,408	1,560	1,733	1,641	1,789	1,932	1,963	2,086	1,967	2,274	16.8	18.5	20.1	18.9	20.3	22.0	22.0	23.2	21.2	23.9	
0-14 y	2	2	2	1	2	3	0	1	1	1	0.2	0.2	0.2	0.1	0.2	0.3	0.0	<0.1	<0.1	0.1	
15-44 y	390	418	433	395	421	454	438	431	375	423	16.1	17.1	17.7	16.5	17.2	18.8	18.1	17.6	15.3	16.9	
45-54 y	292	337	370	351	357	432	444	469	411	473	36.5	42.0	46.5	43.6	45.0	54.4	55.7	59.7	53.2	61.5	
55-64 y	243	272	344	317	366	343	357	436	444	496	35.2	39.1	49.1	44.4	50.7	46.6	47.8	57.7	57.8	64.2	
65-74 y	211	260	240	267	298	335	352	384	350	401	41.9	49.9	45.6	49.4	53.9	58.5	59.9	64.0	57.1	63.1	
75+ y	270	271	344	310	345	365	372	365	386	480	44.9	45.3	56.7	51.0	53.8	58.4	62.4	60.1	63.5	77.4	

N=Number of invasive tumours
WSR=Age-Standardised Rate, using the World Standard Population (N/100,000 person-years)

Figure 5: Melanoma: Age-standardised incidence rates (WSR) versus incidence year by broad age groups for males (top) and females (bottom), Belgium



2. Relative survival

Table 6: Melanoma: 5-year relative survival proportion by sex, age group and region, Belgium 2017-2021

	5-year relative survival 2017-2021 (%)					
	Males			Females		
	N at risk	estimate	95% CI	N at risk	estimate	95% CI
Overall	7,791	93.9	[92.6, 95.2]	9,986	97.0	[96.2, 97.9]
Age group						
15-34 years	325	94.1	[89.8, 96.6]	816	97.7	[95.8, 98.8]
35-64 years	3,729	94.8	[93.6, 95.9]	5,463	98.5	[97.9, 99.1]
65+ years	3,744	92.8	[90.1, 95.4]	3,711	94.5	[92.1, 96.7]
Region						
Brussels-Capital Region	478	94.3	[87.3, 100.0]	597	100.6	[96.5, 103.9]
Flemish Region	5,068	93.0	[91.3, 94.6]	6,633	96.7	[95.6, 97.8]
Walloon Region	2,245	95.7	[93.3, 97.8]	2,757	97.0	[95.3, 98.6]

Figure 6: Melanoma: relative survival proportion by sex, Belgium 2017-2021

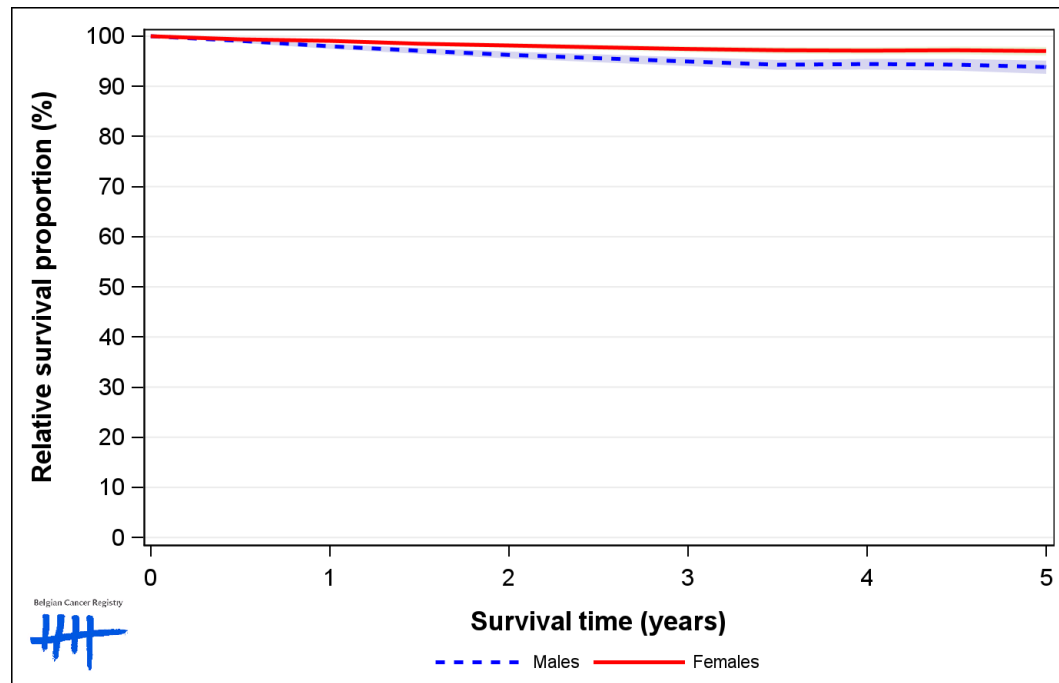


Figure 7: Melanoma: relative survival proportion by age group in males, Belgium 2017-2021

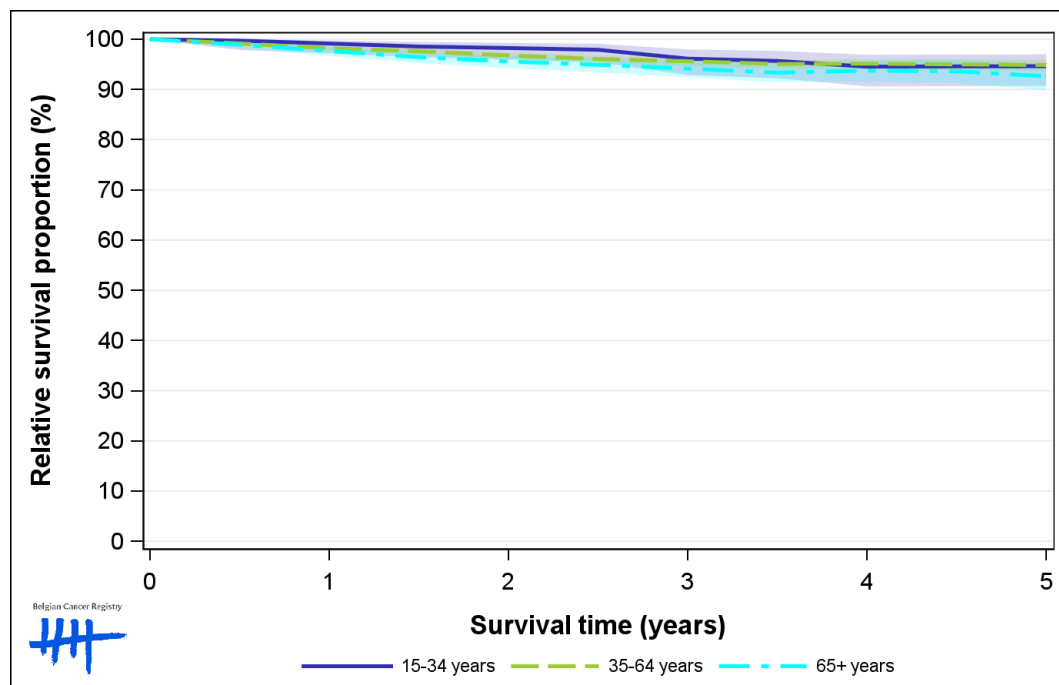


Figure 8: Melanoma: relative survival proportion by age group in females, Belgium 2017-2021

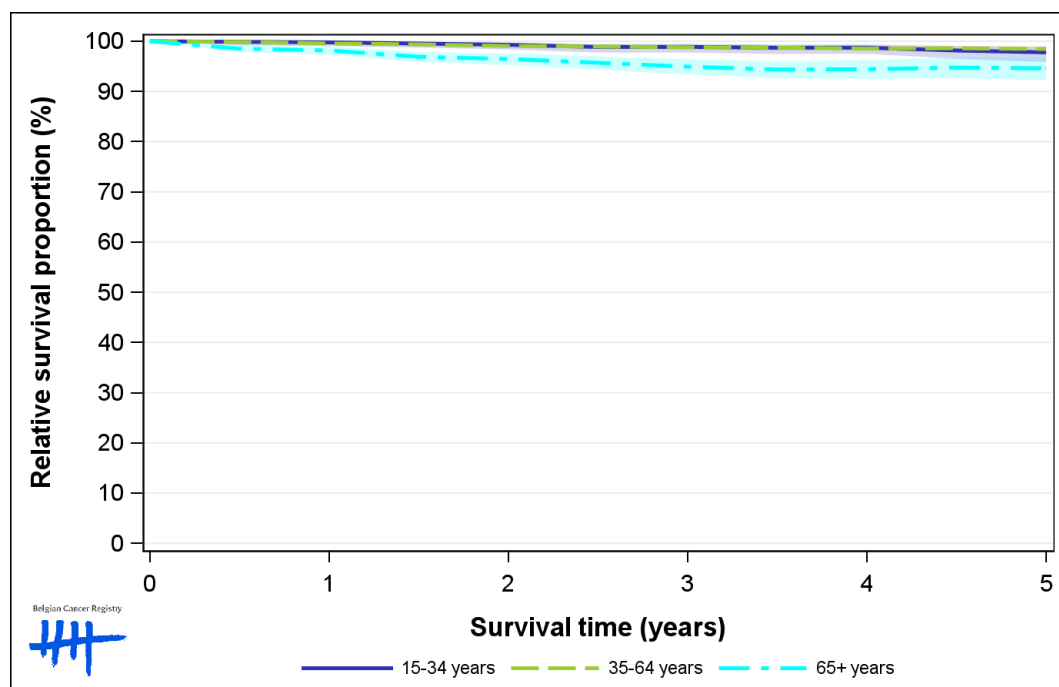


Figure 9: Melanoma: relative survival proportion by region in males, Belgium 2017-2021

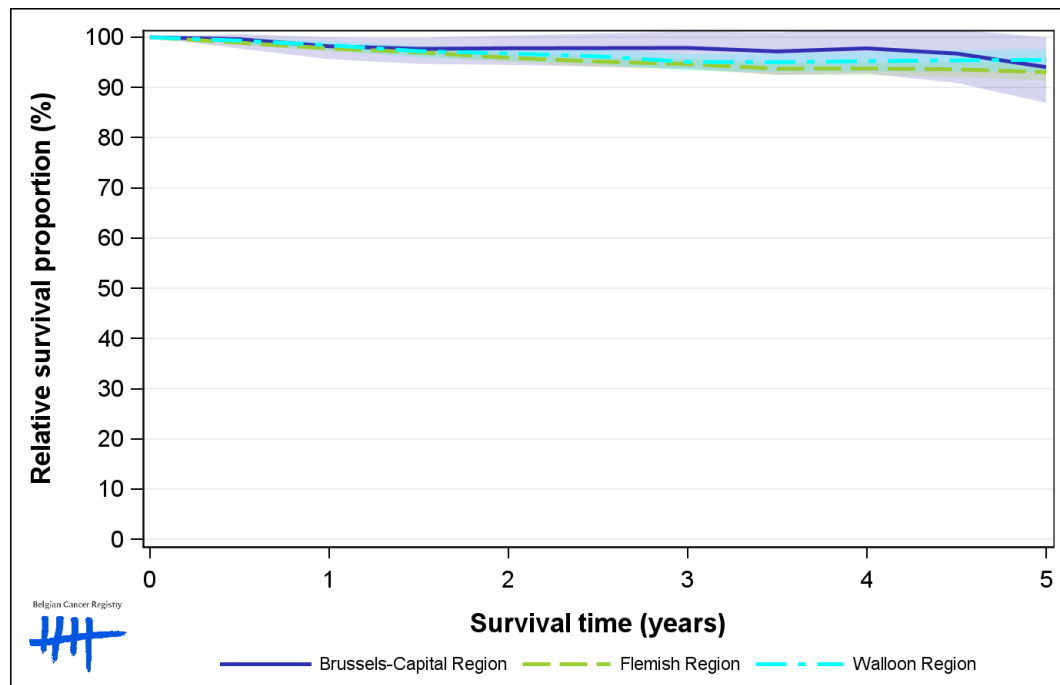


Figure 10: Melanoma: relative survival proportion by region in females, Belgium 2017-2021

