

Belgian Cancer Registry



Cancer Fact Sheet **Mesothelioma**

ICD10 : C45

Belgium 2020

1. Cancer Incidence

1.1. Number of new diagnoses and incidence rates

Table 1: Mesothelioma: Average age at diagnosis, number of new cancer diagnoses (N), crude rate (CR), age-standardised incidence rates (ESR and WSR) and cumulative risk by sex and region, 2020

Males	Age (years)	N	CR	ESR	WSR	CRi
Belgium	74.6	213	3.8	2.4	1.5	0.17
Brussels-Capital Region	75.6	8	1.3	1.3	0.7	<0.1
Flemish Region	74.6	143	4.4	2.6	1.6	0.20
Walloon Region	74.5	62	3.5	2.3	1.4	0.15

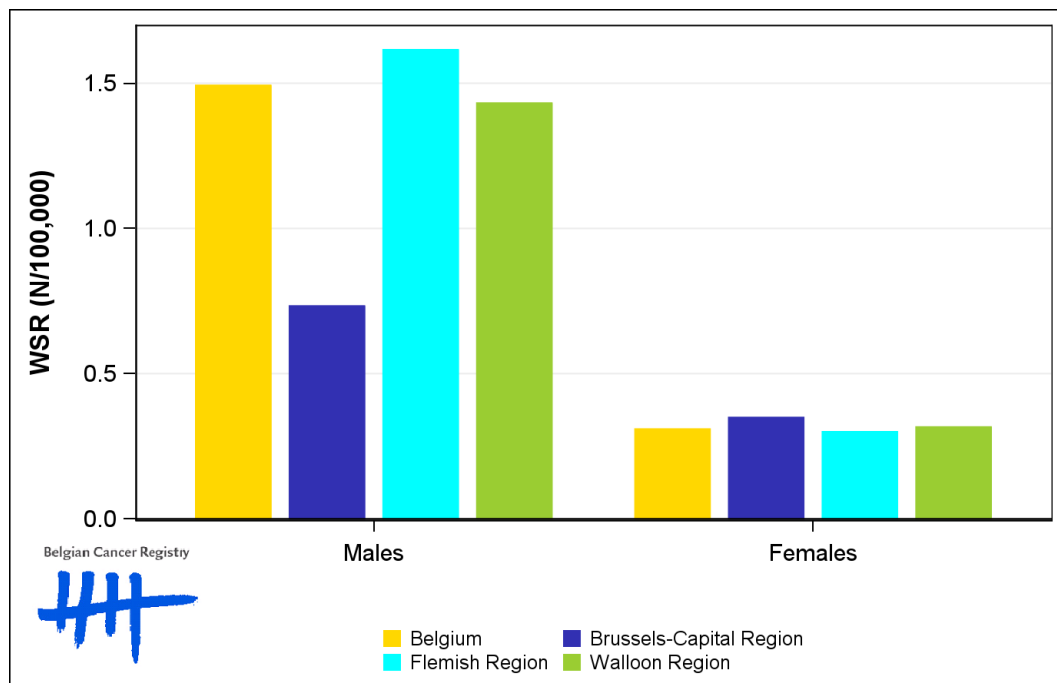
Females	Age (years)	N	CR	ESR	WSR	CRi
Belgium	72.6	47	0.8	0.5	0.3	<0.1
Brussels-Capital Region	74.5	4	0.6	0.5	0.3	<0.1
Flemish Region	73.7	29	0.9	0.5	0.3	<0.1
Walloon Region	69.7	14	0.8	0.5	0.3	<0.1

CR=Crude (all ages) Rate (N/100,000 person-years)
 ESR (1976)=Age-Standardised Rate, using the European Standard Population (N/100,000 person-years)
 WSR=Age-Standardised Rate, using the World Standard Population (N/100,000 person-years)
 CRi=Cumulative Risk for 0-74 years (%)

Belgian Cancer Registry



Figure 1: Mesothelioma: Age-standardised incidence rates by sex and region, 2020



1.2. Age-specific incidence rates

Table 2: Mesothelioma: Age-specific incidence rates, crude rate (CR) and age-standardised incidence rates (ESR and WSR) by sex, Belgium 2020

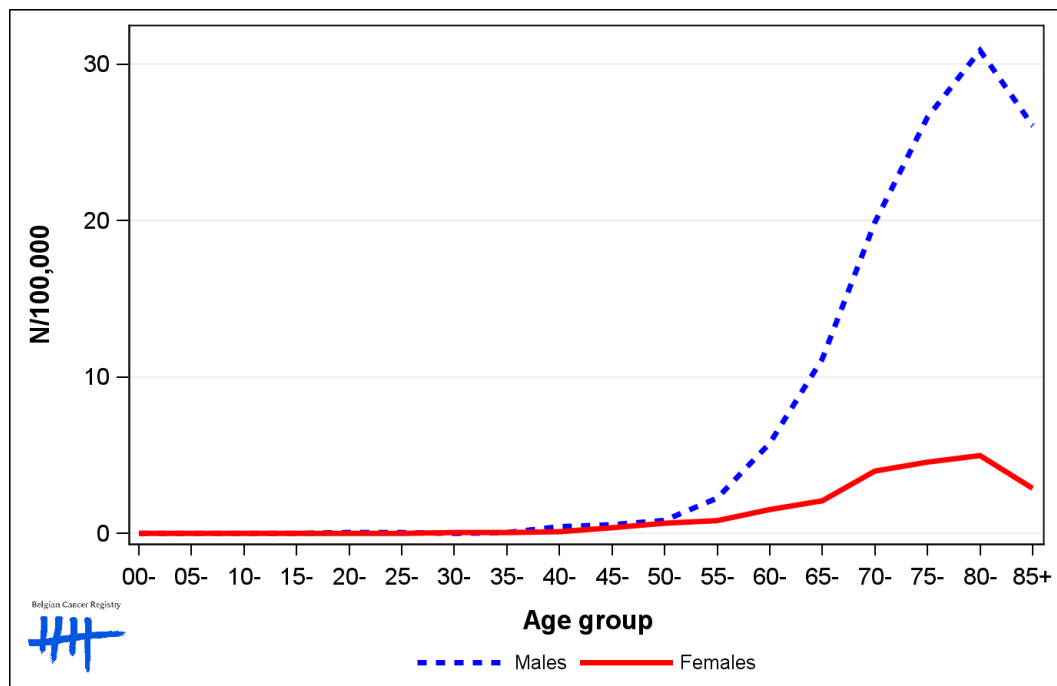
	00-	05-	10-	15-	20-	25-	30-	35-	40-	45-	50-	55-	60-	65-	70-	75-	80-	85+	CR	ESR	WSR
Males	0.0	0.0	0.0	0.0	0.0	0.0	0.0	0.0	0.5	0.0	0.5	1.7	5.0	10.6	15.9	24.2	29.4	27.8	3.8	2.4	1.5
Females	0.0	0.0	0.0	0.0	0.0	0.0	0.0	0.0	0.0	0.0	0.8	0.5	1.6	1.9	2.8	3.8	5.3	1.8	0.8	0.5	0.3

CR=Crude (all ages) Rate (N/100,000 person-years)

ESR (1976)=Age-Standardised Rate, using the European Standard Population (N/100,000 person-years)

WSR=Age-Standardised Rate, using the World Standard Population (N/100,000 person-years)

Figure 2: Mesothelioma: Age-specific incidence rates by sex, 2016-2020



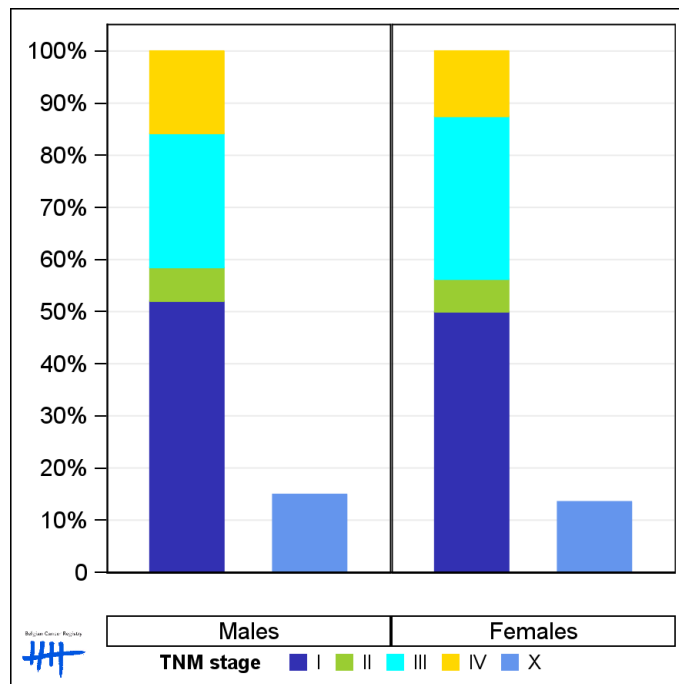
1.3. Combined stage

Table 3: Mesothelioma: Distribution of combined stage by sex, Belgium 2020

	Stage I	Stage II	Stage III	Stage IV	Stage X	Stage NA	Total
Males							
N	89	11	44	27	30	12	213
%	41.8	5.2	20.7	12.7	14.1	5.6	100
Females							
N	16	2	10	4	5	10	47
%	34.0	4.3	21.3	8.5	10.6	21.3	100

Staging according to the TNM 8th edition (Ref: Brierley JD, Gospodarowicz MK, Wittekind Ch. TNM classification of malignant tumours, UICC 8th edition)
 Combined TNM stage : compilation of pathological (pTNM) and clinical (cTNM) stage. pTNM prevails over cTNM, except when cTNM stage is IV
 Stage X: diagnoses with an unknown stage
 Stage NA: diagnoses with a histological diagnosis where no stage can be evaluated (Not Applicable)

Figure 3: Mesothelioma: Bar chart of known combined stage by sex, Belgium 2020



1.4. Trends in incidence

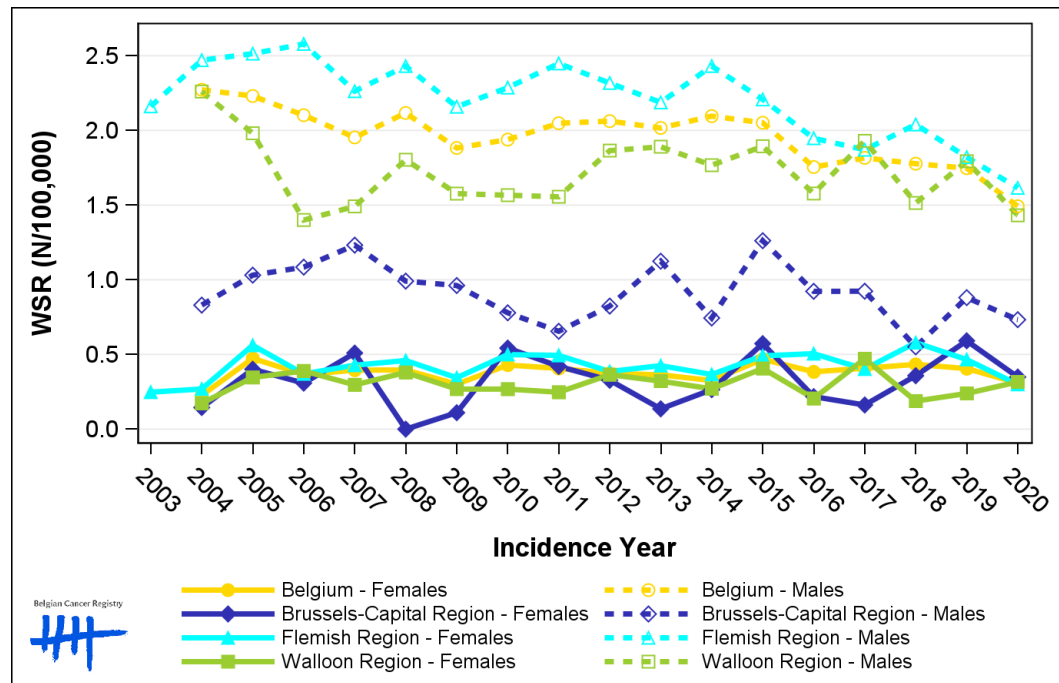
Table 4: Mesothelioma: Age-standardised incidence rates (WSR) and average annual percentage change (AAPC) by incidence year, sex and region

Males	2006	2007	2008	2009	2010	2011	2012	2013	2014	2015	2016	2017	2018	2019	2020	AAPC	95% CI
Belgium	2.1	2.0	2.1	1.9	1.9	2.0	2.1	2.0	2.1	2.1	1.8	1.8	1.8	1.7	1.5	-1.7	[-2.3; -1.1]
Brussels-Capital Region	1.1	1.2	1.0	1.0	0.8	0.7	0.8	1.1	0.7	1.3	0.9	0.9	0.6	0.9	0.7	-2.2	[-4.9; 0.6]
Flemish Region	2.6	2.3	2.4	2.2	2.3	2.4	2.3	2.2	2.4	2.2	1.9	1.9	2.0	1.8	1.6	-2.5	[-3.2; -1.7]
Walloon Region	1.4	1.5	1.8	1.6	1.6	1.6	1.9	1.9	1.8	1.9	1.6	1.9	1.5	1.8	1.4	0.6	[-0.6; 1.8]

Females	2006	2007	2008	2009	2010	2011	2012	2013	2014	2015	2016	2017	2018	2019	2020	AAPC	95% CI
Belgium	0.4	0.4	0.4	0.3	0.4	0.4	0.4	0.4	0.3	0.5	0.4	0.4	0.4	0.4	0.3	0.2	[-1.5; 1.8]
Brussels-Capital Region	0.3	0.5	0.0	0.1	0.5	0.4	0.3	0.1	0.3	0.6	0.2	0.2	0.4	0.6	0.3	0.0	
Flemish Region	0.4	0.4	0.5	0.3	0.5	0.5	0.4	0.4	0.4	0.5	0.5	0.4	0.6	0.5	0.3	0.3	[-2.0; 2.6]
Walloon Region	0.4	0.3	0.4	0.3	0.3	0.2	0.4	0.3	0.3	0.4	0.2	0.5	0.2	0.2	0.3	-1.5	[-4.7; 1.9]

WSR=Age-Standardised Rate, using the World Standard Population (N/100,000 person-years)
 AAPC = Average Annual Percentage Change over the 2006-2020 period

Figure 4: Mesothelioma: Age-standardised incidence rates (WSR) by incidence year, sex and region



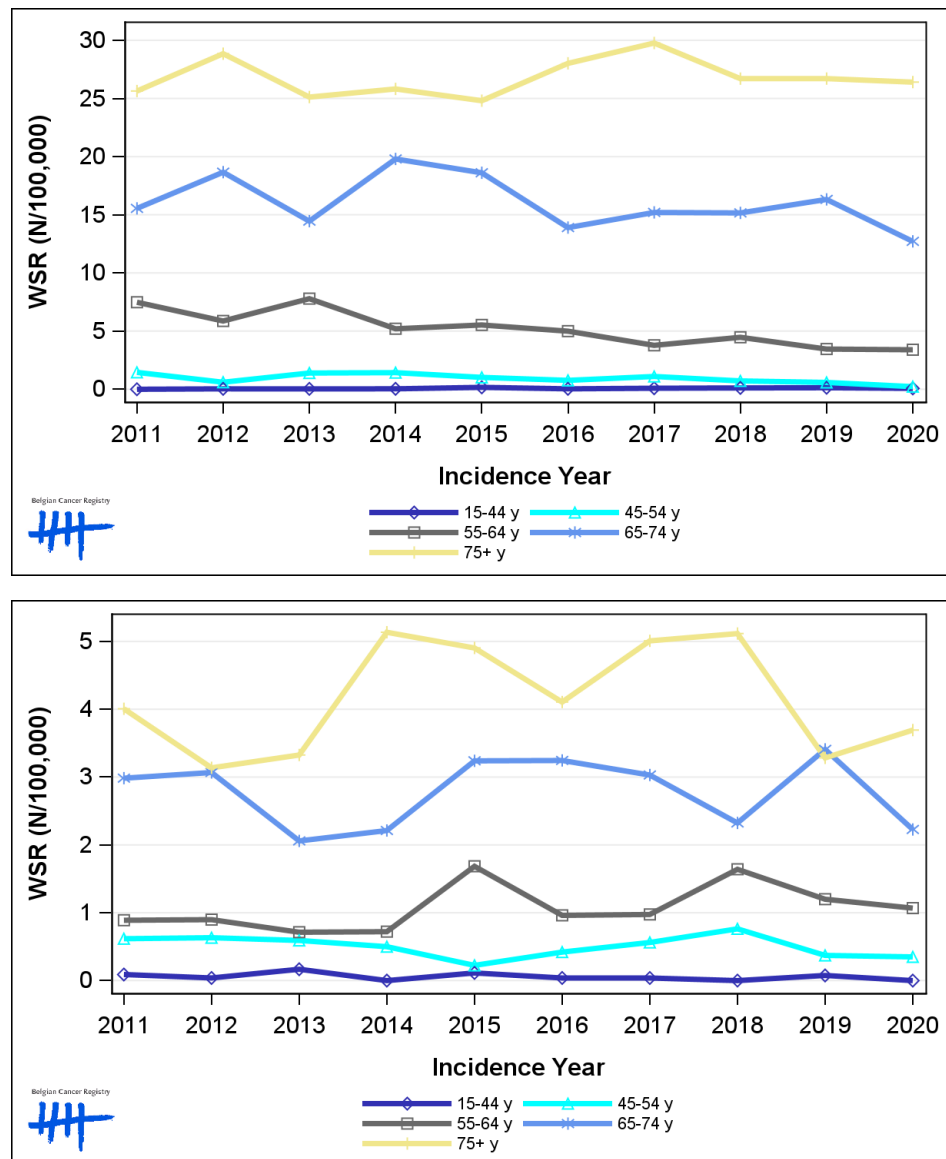
1.5. Incidence by broad age groups

Table 5: Mesothelioma: Number of new diagnoses and age-standardised incidence rates (WSR) by broad age groups and incidence year by sex, Belgium

	N										WSR									
	2011	2012	2013	2014	2015	2016	2017	2018	2019	2020	2011	2012	2013	2014	2015	2016	2017	2018	2019	2020
Males																				
All ages	223	236	228	245	240	221	238	233	235	213	2.0	2.1	2.0	2.1	2.1	1.8	1.8	1.8	1.7	1.5
0-14 y	0	0	0	0	0	0	0	0	0	0	0.0	0.0	0.0	0.0	0.0	0.0	0.0	0.0	0.0	0.0
15-44 y	0	1	1	1	4	1	2	3	3	2	0.0	<0.1	<0.1	<0.1	0.2	<0.1	<0.1	0.1	0.1	<0.1
45-54 y	12	5	12	12	9	6	9	6	5	2	1.5	0.6	1.4	1.4	1.0	0.8	1.1	0.7	0.6	0.2
55-64 y	50	39	52	36	38	34	27	32	25	25	7.5	5.9	7.8	5.2	5.5	5.0	3.8	4.5	3.5	3.4
65-74 y	70	87	68	94	91	70	81	84	92	73	15.5	18.7	14.5	19.8	18.6	13.9	15.2	15.2	16.3	12.7
75+ y	91	104	95	102	98	110	119	108	110	111	25.6	28.9	25.1	25.8	24.8	28.0	29.8	26.7	26.7	26.4
Females																				
All ages	51	44	44	49	65	54	62	62	54	47	0.4	0.4	0.4	0.3	0.5	0.4	0.4	0.4	0.4	0.3
0-14 y	0	0	0	0	0	0	0	0	0	0	0.0	0.0	0.0	0.0	0.0	0.0	0.0	0.0	0.0	0.0
15-44 y	2	1	4	0	3	1	1	0	2	0	<0.1	<0.1	0.2	0.0	0.1	<0.1	<0.1	0.0	<0.1	0.0
45-54 y	5	5	5	4	2	3	5	6	3	3	0.6	0.6	0.6	0.5	0.2	0.4	0.6	0.8	0.4	0.3
55-64 y	6	6	5	5	12	7	7	12	9	8	0.9	0.9	0.7	0.7	1.7	1.0	1.0	1.6	1.2	1.1
65-74 y	14	15	11	12	17	18	18	14	22	14	3.0	3.1	2.1	2.2	3.2	3.2	3.0	2.3	3.4	2.2
75+ y	24	17	19	28	31	25	31	30	18	22	4.0	3.1	3.3	5.1	4.9	4.1	5.0	5.1	3.3	3.7

N=Number of invasive tumours
WSR=Age-Standardised Rate, using the World Standard Population (N/100,000 person-years)

Figure 5: Mesothelioma: Age-standardised incidence rates (WSR) versus incidence year by broad age groups for males (top) and females (bottom), Belgium



2. Relative survival

Table 6: Mesothelioma: 5-year relative survival proportion by sex, age group and region, Belgium 2016-2020

	5-year relative survival 2016-2020 (%)					
	Males			Females		
	N at risk	estimate	95% CI	N at risk	estimate	95% CI
Overall	1,137	9.5	[7.2, 12.3]	279	16.5	[11.1, 23.0]
Age group						
15-59 years	83	20.5	[11.0, 32.2]	40	23.6	[8.0, 43.9]
60-74 years	499	12.2	[8.4, 16.7]	113	18.1	[10.1, 28.1]
75+ years	555	4.7	[2.4, 8.3]	126	12.9	[6.3, 22.4]
Region						
Brussels-Capital Region	770	10.1	[7.2, 13.5]	19	NA (N<35)	-
Flemish Region	330	9.1	[5.3, 14.4]	193	18.2	[12.2, 25.3]
Walloon Region	330			67	19.5	[7.6, 36.6]

Figure 6: Mesothelioma: relative survival proportion by sex, Belgium 2016-2020

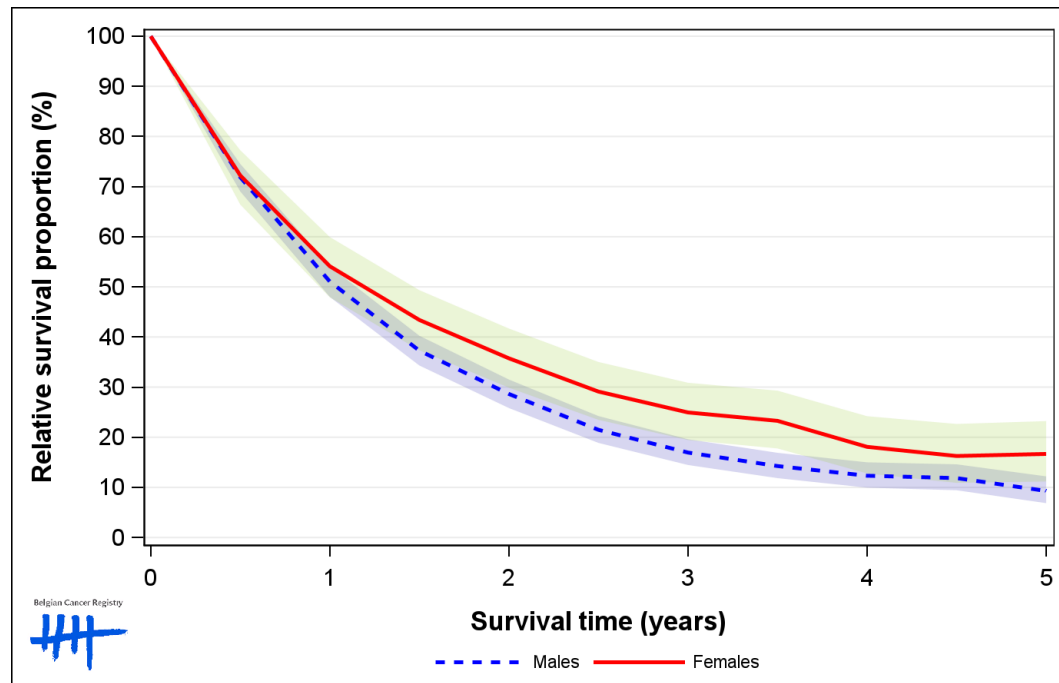


Figure 7: Mesothelioma: relative survival proportion by age group in males, Belgium 2016-2020

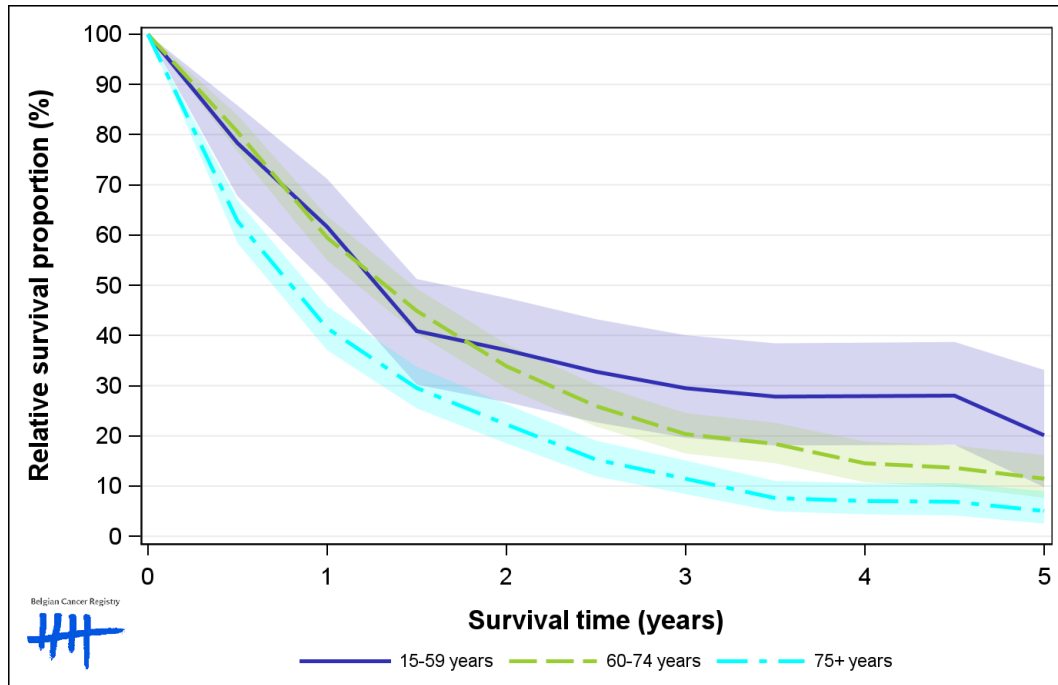


Figure 8: Mesothelioma: relative survival proportion by age group in females, Belgium 2016-2020

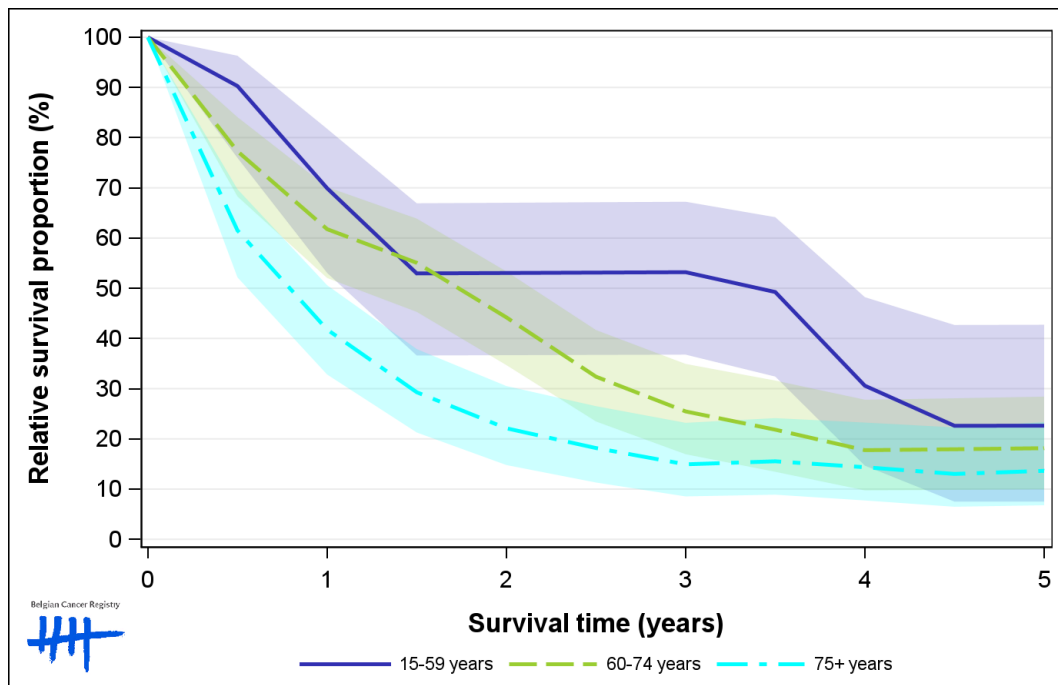


Figure 9: Mesothelioma: relative survival proportion by region in males, Belgium 2016-2020

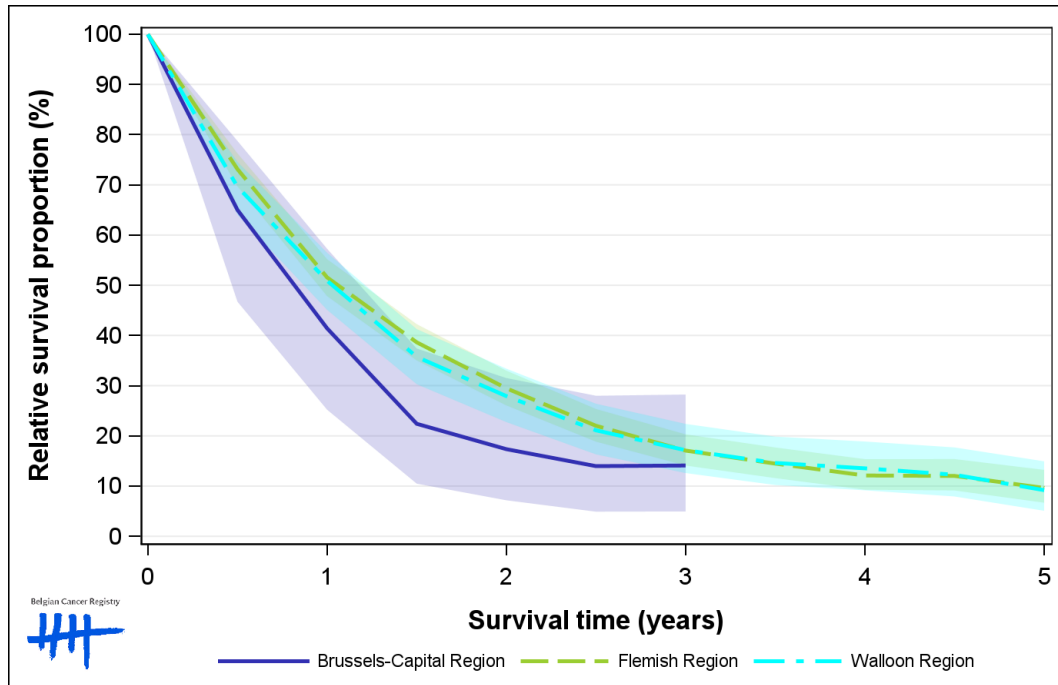


Figure 10: Mesothelioma: relative survival proportion by region in females, Belgium 2016-2020

