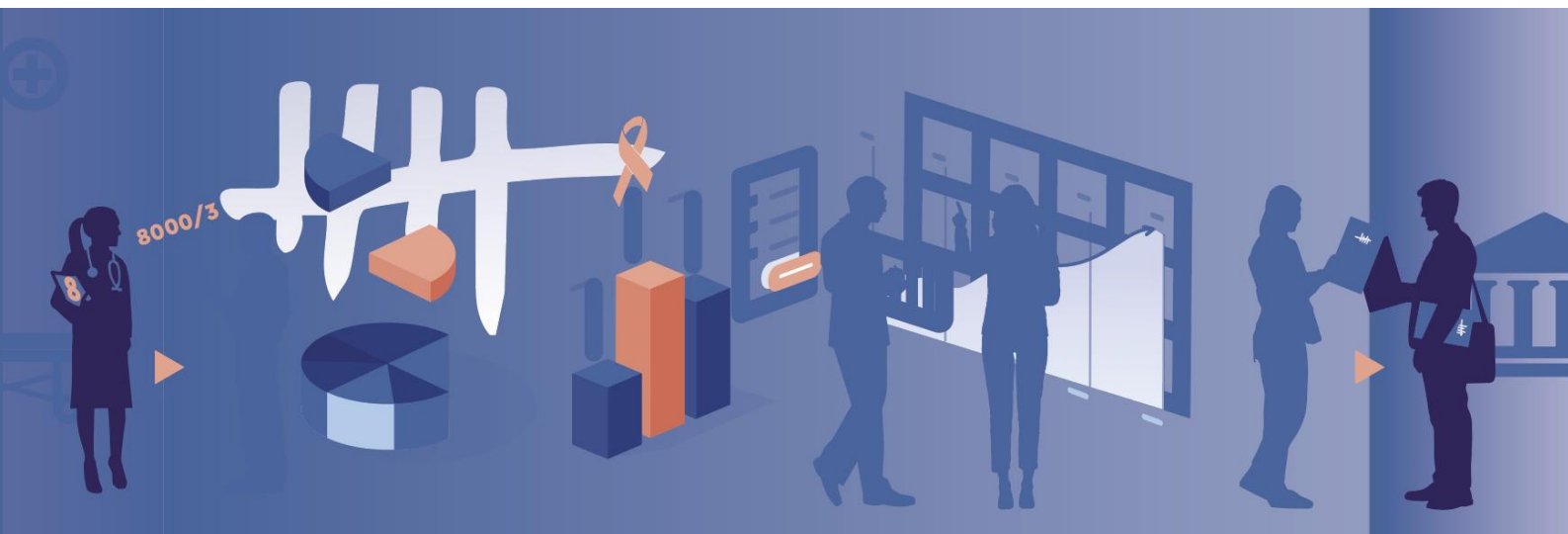


Cyto-histopathology register cervix - metadata

BELGIAN CANCER REGISTRY



Cyto-histopathology register cervix

Background

The Belgian Cancer Registry (BCR) plays an important supportive role in the organisation and quality evaluation of regional population screening for breast, colorectal and **cervical** cancer.

Belgian pathological anatomy/clinical biology/haematology laboratories are required by law to register the results of breast, cervical and colorectal samples according to specifically established guidelines. This registration relates to the early detection of breast, cervical and colorectal cancer. These data, together with the associated pathology reports, are transferred to BCR in the form of a structured dataset. These data are subsequently treated and registered in the cyto-histopathology (CHP) register.

Content

The database contains all cervical samples treated and delivered by the Belgian pathological anatomy laboratories.

Variable name	Description	Variable type
fld_ic	Refers to the date the sample was collected.	Number
regist	Refers to the year when the sample was collected.	Number
fld_bi	Refers to the date of birth.	Number
cls_ag	Refers to the age at sample collection.	Number
fld_sx	Refers to the sex at birth.	Number
fld_ch	Refers to the most reliable method by which a diagnosis was made.	String
fld_hr	Refers to the result of the HPV test.	String
fld_ht	Refers to the HPV types detected in case of HPV positivity.	String
fld_ls	Refers to the histology and behaviour of the sample.	String
fld_qs	Refers to the assessment of the specimen's quality.	String
fld_or	Refers to the location where the sample was collected.	String
region_source	Refers to the region where the laboratory is situated.	String